
The Group Robustness is in the Details: Revisiting Finetuning under Spurious Correlations

Tyler LaBonte^{1*} John C. Hill² Xinchen Zhang²
Vidya Muthukumar^{2,1} Abhishek Kumar[†]

¹H. Milton Stewart School of Industrial and Systems Engineering, Georgia Institute of Technology

²School of Electrical and Computer Engineering, Georgia Institute of Technology

Abstract

Modern machine learning models are prone to over-reliance on spurious correlations, which can often lead to poor performance on minority groups. In this paper, we identify surprising and nuanced behavior of finetuned models on worst-group accuracy via comprehensive experiments on four well-established benchmarks across vision and language tasks. We first show that the commonly used class-balancing techniques of mini-batch upsampling and loss upweighting can induce a decrease in worst-group accuracy (WGA) with training epochs, leading to performance no better than without class-balancing. While in some scenarios, removing data to create a class-balanced subset is more effective, we show this depends on group structure and propose a mixture method which can outperform both techniques. Next, we show that scaling pretrained models is generally beneficial for worst-group accuracy, but only in conjunction with appropriate class-balancing. Finally, we identify spectral imbalance in finetuning features as a potential source of group disparities — minority group covariance matrices incur a larger spectral norm than majority groups once conditioned on the classes. Our results show more nuanced interactions of modern finetuned models with group robustness than was previously known. Our code is available at <https://github.com/tmlabonte/revisiting-finetuning>.

1 Introduction

Classification performance in machine learning is sensitive to *spurious correlations*: patterns which are predictive of the target class in the training dataset but not at test time. For example, in computer vision tasks, neural networks are known to utilize the backgrounds of images as proxies for their content [1, 50, 68]. Beyond simple settings, spurious correlations have been identified in high-consequence applications such as criminal justice [8], medicine [70], and facial recognition [33]. In particular, a model’s reliance on spurious correlations disproportionately affects its accuracy on *minority groups* which are under-represented in the training dataset; we therefore desire maximizing the model’s *group robustness*, quantified by its minimum accuracy on any group [50].

The standard workflow in modern machine learning involves initializing from a pretrained model and finetuning on the downstream dataset using empirical risk minimization (ERM) [62], which minimizes the average training loss. When *group annotations* are available in the training dataset, practitioners utilize a rich literature of techniques to improve worst-group accuracy (WGA) [50, 39, 26]. However, group annotations are often unknown or problematic to obtain (*e.g.*, due to financial, privacy, or fairness concerns). While group robustness methods have been adapted to work without group annotations [31, 72, 47, 29], they remain complex variants on the standard finetuning procedure.

*Corresponding author. Email: tlabonte@gatech.edu.

[†]Work done at Google DeepMind.

Hence, it is often unclear to what extent the WGA dynamics of these methods are attributable to details of model finetuning.

In this paper, we take a complementary approach to the methodological literature by pursuing a comprehensive understanding of the *fundamental properties* of model finetuning on four well-established group robustness benchmarks across vision and language tasks. We focus especially on the conjunction of *model scaling* and *class-balancing* — which was recently shown to greatly improve robustness on some datasets [22] — on the worst-group accuracy of the ERM baseline. These considerations enable us to isolate the impact of group disparities on worst-group accuracy, thereby revealing more nuanced behaviors of finetuned models than previously known. In particular, we challenge overarching narratives that “overparameterization helps or hurts distributional robustness” and show striking differences in finetuning performance depending on class-balancing methodology.

In more detail, our main contributions include:

- Identifying two *failure modes* of common class-balancing techniques during finetuning: (1) mini-batch upsampling and loss upweighting experience catastrophic collapse with standard hyperparameters on benchmark datasets, and (2) removing data to create a class-balanced subset can harm WGA for certain datasets.
- Proposing a *mixture balancing* method which combines the advantages of two class-balancing techniques and can improve baseline WGA beyond either method.
- Showing that while overparameterization can harm WGA in certain cases, model scaling is generally beneficial for robustness when applied *in conjunction* with appropriate pretraining and class-balancing.
- Identifying a *spectral imbalance* in the top eigenvalues of the group covariances — even when the classes are balanced — and showing that minority group covariance matrices consistently have larger spectral norm conditioned on the classes.

1.1 Related work

Here we provide a brief summary of related work along three axes. Throughout the paper, we also provide detailed contextualizations of our results with the most closely related work.

Spurious correlations. The proclivity of ERM to rely on spurious correlations has been widely studied [12, 37]. Rectifying this weakness is an important challenge for real-world deployment of machine learning algorithms, as spurious correlations can exacerbate unintended bias against demographic minorities [20, 2, 57, 17, 5] or cause failure in high-consequence applications [33, 8, 70, 42]. Reliance on spurious correlations manifests in image datasets as the usage of visual shortcuts including background [1, 50, 68], texture [11], and secondary objects [48, 52, 54], and in text datasets as the usage of syntactic or statistical heuristics as a substitute for semantic understanding [14, 41, 36].

Class-balancing and group robustness. *Group-balancing*, or training with an equal number of samples from each group, has been proposed as a simple yet effective method to improve robustness to spurious correlations [17, 51, 6, 55]. However, group-balancing requires group annotations, which are often unknown or problematic to obtain [31, 72, 47, 29]. On the other hand, *class-balancing*, or training with an equal number of samples from each class, is a well-studied method in long-tailed classification [24, 15, 4]. Recent work has shown that class-balancing is a surprisingly powerful method for improving worst-group accuracy which does not require group annotations [22, 29, 7, 53]. In particular, [22] study the WGA dynamics of two common class-balancing methods: removing data from the larger classes (which we call *subsetting*) and upsampling the smaller classes (which we call *upsampling*). Our results complement those of [22] and show more nuanced effects of class-balancing than previously known; we provide additional contextualization with [22] in Section 3.1. We show similar nuanced behavior of *upweighting* smaller classes in the loss function, a popular method in the group-balancing setting [31, 47, 55] which [22] did not study.

Overparameterization and distributional robustness. While the accepted empirical wisdom is that overparameterization improves *in-distribution* test accuracy [40, 71], the relationship between overparameterization and robustness is incompletely understood. [51] considered a class of ResNet-18 architectures and showed that increasing model *width* reduces worst-group accuracy on the

Waterbirds and CelebA datasets when trained with class-imbalanced ERM — this contrasts with the improvement in average accuracy widely observed in practice (see, *e.g.*, [38]). Conversely, [19] showed a benefit of overparameterization in robustness to “natural” covariate shifts, which are quite different from spurious correlations [27]. On the mathematical front, [59, 35] showed that overparameterization in random feature models trained to completion improves robustness to a wide class of covariate shifts. However, both the optimization trajectory and statistical properties of random features are very different from neural networks (see, *e.g.*, [13]). Closely related to our work, [46] investigated pretrained ResNet, VGG, and BERT models, and showed that overparameterization does not harm WGA. Our results complement those of [46] with a richer setup and show that class-balancing — which they do not study — can greatly impact model scaling behavior.

2 Preliminaries

Setting. We consider classification tasks with input domain \mathbb{R}^n and target classes $\mathcal{Y} \subset \mathbb{N}$. Suppose \mathcal{S} is a set of *spurious features* such that each example $\mathbf{x} \in \mathbb{R}^n$ is associated with exactly one feature $s(\mathbf{x}) \in \mathcal{S}$. The dataset is then partitioned into *groups* \mathcal{G} , defined by the Cartesian product of classes and spurious features $\mathcal{G} = \mathcal{Y} \times \mathcal{S}$. Given a dataset of m training examples, we define the set of indices of examples which belong to some group $g \in \mathcal{G}$ or class $y \in \mathcal{Y}$ by $\Omega_g \subseteq \{1, \dots, m\}$ and $\Omega_y \subseteq \{1, \dots, m\}$, respectively. Then, the *majority group(s)* is defined by the group(s) that maximize $|\Omega_g|$. All other groups are designated as *minority groups*. Further, the *worst group(s)*³ is defined by the group(s) which incur minimal test accuracy. We define majority and minority classes similarly. Because groups are defined by the Cartesian product of classes and spurious features, all training examples in a particular group are identically labeled, and therefore *a group is a subset of a class*.

We desire a model which, despite group imbalance in the training dataset, enjoys roughly uniform performance over \mathcal{G} . Therefore, we evaluate *worst-group accuracy* (WGA), *i.e.*, the minimum accuracy among all groups [50]. We will also be interested in the relative performance on groups *within the same class*, and we thereby define the *majority group within a class* $y \in \mathcal{Y}$ as the group which maximizes $|\Omega_g|$ over all $g \in \{g \in \mathcal{G} : y \in g\}$. Other groups are designated as the minority groups within that class. For example, referring to the Waterbirds section of Table 2, groups 1 and 2 are the minority groups within classes 0 and 1, respectively.

Class-balancing. A dataset is considered to be *class-balanced* if it is composed of an equal number of training examples from each class in expectation over the sampling probabilities. We compare three class-balancing techniques: *subsetting*, *upsampling*, and *upweighting*. We describe each below:

- In *subsetting*, every class is set to the same size as the smallest class by removing the appropriate amount of data from each larger class uniformly at random. This procedure is performed only once, and the subset is fixed prior to training.
- In *upsampling*, the entire dataset is utilized for training with a typical stochastic optimization algorithm, but the sampling probabilities of each class are adjusted so that mini-batches are class-balanced in expectation. To draw a single example, we first sample $y \sim \text{Unif}(\mathcal{Y})$, then sample $\mathbf{x} \sim \hat{p}(\cdot | y)$ where \hat{p} is the *empirical* distribution on training examples.
- In *upweighting*, the minority class samples are directly upweighted in the loss function according to the ratio of majority class data to minority class data, called the *class-imbalance ratio*. Specifically, if the loss function is $\ell(f(\mathbf{x}), y)$ for model f , example \mathbf{x} , and class label y , the upweighted loss function is $\gamma \ell(f(\mathbf{x}), y)$ where γ is defined as the class-imbalance ratio for minority class data and 1 for majority class data. It is worth noting that upweighting is equivalent to upsampling in expectation over the sampling probabilities.

Note that the terminology for these class-balancing techniques is not consistent across the literature. For example, [22] call subsetting *subsampling* (denoted SUBY) and upsampling *reweighting* (denoted RWY). On the other hand, [55] call (group-wise) subsetting *downsampling* and use *upweighting* to describe increasing the weight of minority group samples in the loss function.

³Note that, as is standard in the empirical literature on distributional robustness, majority, minority and worst groups are defined with respect to the empirical training distribution, as this is all that we have access to. Moreover, test accuracy is typically maximized by the majority group and minimized by a minority group, though this is not always the case.

Datasets and models. We study four classification datasets, two in the vision domain and two in the language domain, which are well-established as benchmarks for group robustness. We summarize each dataset below and provide additional numerical details in Appendix A.1.

- *Waterbirds* [64, 63, 50] is an image dataset wherein birds are classified as land species (“landbirds”) or water species (“waterbirds”). The spurious feature is the image background: more landbirds are present on land backgrounds and vice versa.⁴
- *CelebA* [33, 50] is an image dataset classifying celebrities as blond or non-blond. The spurious feature is gender, with more blond women than blond men in the training dataset.
- *CivilComments* [3, 27] is a language dataset wherein online comments are classified as toxic or non-toxic. The spurious feature is the presence of one of the following categories: male, female, LGBT, black, white, Christian, Muslim, or other religion.⁵ More toxic comments contain one of these categories than non-toxic comments, and vice versa.
- *MultiNLI* [65, 50] is a language dataset wherein pairs of sentences are classified as a contradiction, entailment, or neither. The spurious feature is a negation in the second sentence — more contradictions have this property than entailments or neutral pairs.

Waterbirds is class-imbalanced with a majority/minority class ratio of 3.31:1, CelebA a ratio of 5.71:1, and CivilComments a ratio of 7.85:1. MultiNLI is class-balanced *a priori*. Since the Waterbirds dataset has a shift in group proportion from train to test, we weight the group accuracies by their proportions in the training set when reporting the test average accuracy [50].

We utilize ResNet [18], ConvNeXt-V2 [67], and Swin Transformer [32] models pretrained on ImageNet-1K [49] for Waterbirds and CelebA, and a BERT [9] model pretrained on Book Corpus [73] and English Wikipedia for CivilComments and MultiNLI. We use the AdamW optimizer [34] for finetuning on three independent seeds, randomizing both mini-batch order and any other stochastic procedure such as subsetting, and we report error bars corresponding to one standard deviation. We do not utilize early-stopping: instead, to consider the impact of overparameterization in a holistic way, we train models to completion to properly measure the overfitting effect.⁶ This can result in longer training than commonly seen in the literature (*e.g.*, we finetune on CelebA for about $3\times$ more gradient steps than is standard). See Appendix A.2 for further training details.

3 Nuanced effects of class-balancing on group robustness

We now present our first set of results, which shows that the choice of class balancing method greatly impacts the group robustness of the ERM baseline.

3.1 Catastrophic collapse of class-balanced upsampling and upweighting

In a recent paper, [29] observed that contrary to the central hypothesis underlying the Just Train Twice method [31], the worst-group accuracy of ERM decreases dramatically with training epochs on CelebA and CivilComments; however, they provide no explanation for this phenomenon. In this section, we show that this degradation of WGA is due to their choice of class-balancing method (*i.e.*, upsampling). Specifically, ERM finetuned with upsampling experiences a *catastrophic collapse* in test WGA over the course of training, a phenomenon that was previously only noticed in synthetic datasets with a linear classifier [22]. Moreover, while [22] state that class-balanced subsetting is not recommended in practice, we show that it can in fact improve WGA conditional on the lack of a small minority group *within the majority class*. Finally, we show that class-balanced upweighting — a popular technique which [22] do not study — experiences a similar WGA collapse as upsampling.

We finetune a ConvNeXt-V2 Base on Waterbirds and CelebA and a BERT Base on CivilComments, and we compare the subsetting, upsampling, and upweighting techniques to a class-imbalanced

⁴We note that the Waterbirds dataset is known to contain incorrect labels [56]. We report results on the original, un-corrected version as is standard in the literature.

⁵This version of CivilComments has four groups, used in this work and by [50, 22, 23, 26, 29]. There is another version where the identity categories are not collapsed into one spurious feature; that version is used by [31, 72, 47]. Both versions use the WILDS split [27].

⁶To be more specific, we finetune ConvNeXt-V2 Base roughly to a training loss of 10^{-4} on Waterbirds and 10^{-3} on CelebA, and BERT Base roughly to a training loss of 10^{-3} on CivilComments and 10^{-2} on MultiNLI.

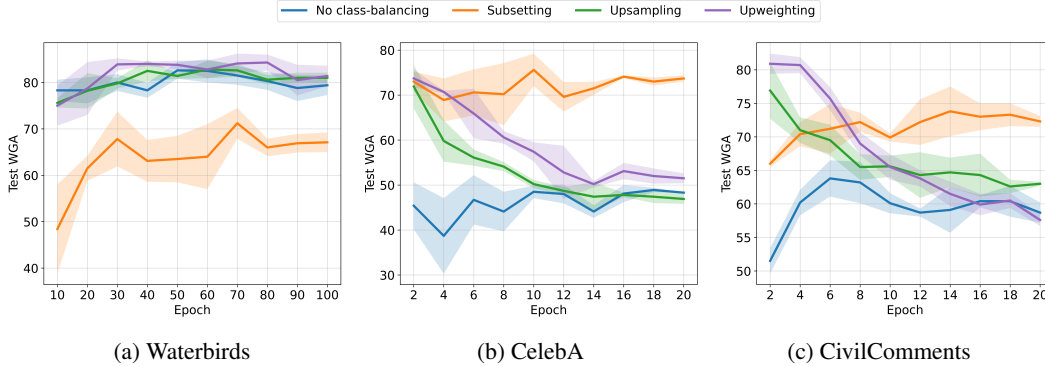


Figure 1: **Class-balanced upsampling and upweighting experience catastrophic collapse.** We compare *subsetting*, wherein data is removed to set every class to the same size as the smallest class, *upsampling*, wherein the sampling probabilities of each class are adjusted so that the mini-batches are class-balanced in expectation, and *upweighting*, wherein the loss for the smaller classes is scaled by the class-imbalance ratio. We observe a catastrophic collapse over the course of training of upsampling and upweighting on CelebA and CivilComments, the more class-imbalanced datasets. Subsetting reduces WGA on Waterbirds because it removes data from the small minority group within the majority class. MultiNLI is class-balanced *a priori*, so we do not include it here.

baseline. Our results are displayed in Figure 1, with additional models in Appendix B. On CelebA and CivilComments, the more class-imbalanced datasets, upsampling and upweighting both experience catastrophic collapse over the course of training. We believe this collapse is caused by overfitting to the minority group within the minority class; any individual point from this group is sampled far more often during upsampling and weighted far more heavily during upweighting, causing overfitting during long training runs. In fact, upsampling does even worse on CelebA than observed in [29] because we train $3\times$ longer to ensure convergence. With that said, optimally tuned early-stopping appears to mitigate the collapse (as previously noticed by [22] in a toy setting).

Our experiments also highlight a previously unnoticed disadvantage of class-balanced subsetting: if there is a small minority group in the majority class, subsetting will further reduce its proportion and harm WGA. For example, in the Waterbirds dataset, the species (landbirds/waterbirds) is the class label and the background (land/water) is the spurious feature; *landbirds/water* is a small minority group within the majority class (landbirds). When landbirds is cut by $3.31\times$, the *landbirds/water* group greatly suffers, harming WGA. On the other hand, in the CelebA dataset, the hair color (non-blond/blond) is the class label and the gender (female/male) is the spurious feature; the only small minority group is *blond/male*, while the groups are nearly balanced in the majority class. In this case, subsetting preserves *blond/male* examples and increases their proportion, helping WGA.

Finally, while upsampling and upweighting have similar WGA dynamics – perhaps as expected, as they are equivalent in expectation over the sampling mechanism — both differ greatly from subsetting. Recently, [55] proved a theoretical equivalence between subsetting and upsampling of the *groups* in the *population* setting, *i.e.*, assuming access to the training distribution. The equivalence of upsampling and upweighting would then imply that all three objectives are optimized by the same solution. However, our results suggest this may not hold in the real-world *empirical* setting, where subsetting has distinctly different behavior, and model parameters may outnumber training examples. As previously mentioned, this may be due to overfitting to minority class data repeated often during training; theoretically investigating this discrepancy is an important future direction.

Contextualization with previous work. Our observations explain the decrease in WGA of CelebA and CivilComments noticed by [29], a phenomenon which they left unresolved. Our result implies that group robustness methods which assume that WGA increases during training, such as Just Train Twice [31], may only be justified with appropriate class-balancing. [22] show that upsampling can cause catastrophic collapse in WGA, but only in a synthetic dataset with a linear classifier. In realistic datasets, [22] perform extensive hyperparameter tuning (using group labels, which may be unrealistic) to achieve good results with upsampling, while we show that catastrophic collapse can occur in the same datasets when standard hyperparameters are used. Moreover, [22] state that class-balanced

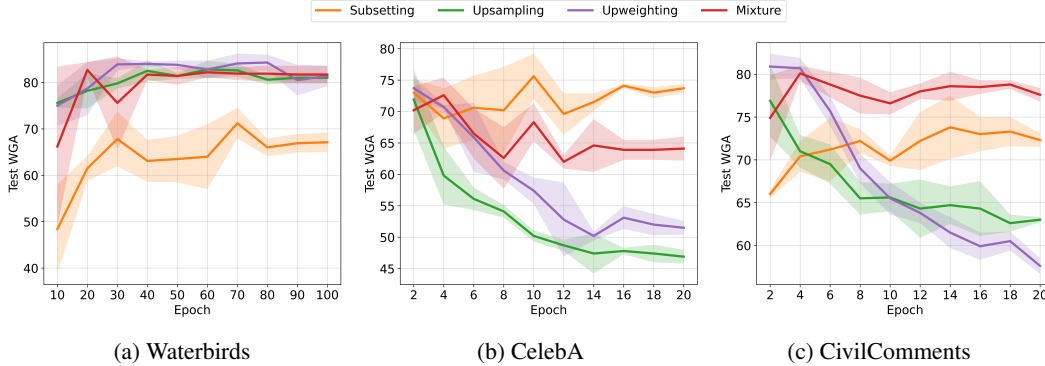


Figure 2: **Mixture balancing mitigates catastrophic collapse of upsampling and upweighting.** We propose a class-balanced *mixture method*, which combines subsetting and upsampling by first drawing a class-imbalanced subset uniformly at random from the dataset, then adjusting sampling probabilities so that mini-batches are balanced in expectation. Our method increases exposure to majority class data without over-sampling the minority class. Remarkably, mixture balancing outperforms all three class-balancing methods on Waterbirds and CivilComments, and while it does not outperform subsetting on CelebA, it significantly alleviates the WGA collapse experienced by upsampling and upweighting. MultiNLI is class-balanced *a priori*, so we do not include it here.

subsetting is not recommended in practice, but we show that subsetting can be effective except when there is a small minority group within the majority class, a previously unnoticed nuance. Finally, we show that subsetting experiences different WGA dynamics from upsampling and upweighting in the empirical setting, suggesting additional complexity compared to the population setting results of [55].

Without extensive tuning, class-balanced *upsampling* and *upweighting* can induce WGA no better than without class-balancing. While class-balanced *subsetting* can improve WGA, practitioners should use caution if a small minority group is present within the majority class.

3.2 Mixture balancing: interpolating between subsetting and upsampling

To mitigate the catastrophic collapse of class-balanced upsampling and upweighting, we propose a simple *mixture method* which interpolates between subsetting and upsampling. Our method increases exposure to majority class data without over-sampling the minority class, which can improve WGA and mitigate overfitting to the minority group. We first create a data subset with a specified *class-imbalance ratio* by removing data from the larger classes uniformly at random until the desired (smaller) ratio is achieved. Next, we perform ERM finetuning on this subset by adjusting sampling probabilities so that mini-batches are balanced in expectation. Using a class-imbalance ratio of 1:1 reduces to subsetting, and using the original class-imbalance ratio reduces to upsampling.

We finetune ConvNeXt-V2 Base on Waterbirds and CelebA and BERT Base on CivilComments, and we compare our class-balanced mixture method to the subsetting, upsampling, and upweighting techniques. The results of our experiments are displayed in Figure 2. We plot the performance of our mixture method with the best class-imbalance ratio during validation; an ablation study varying the ratio is included in Appendix B. Remarkably, mixture balancing outperforms all three class-balancing methods on Waterbirds and CivilComments, and while it does not outperform subsetting on CelebA, it significantly alleviates the WGA collapse experienced by upsampling.

Next, we perform an ablation of the necessity of subsetting in mixture balancing. We compare our method with an implementation which eschews subsetting, instead adjusting sampling probabilities so that the mini-batches have a particular class ratio in expectation. For example, instead of performing upsampling on a 2:1 class-imbalanced subset, we upsample the majority class by a ratio of 2:1 on the entire dataset. The results of our ablation are included in Appendix B; our mixture method outperforms the alternative, which incompletely corrects for class imbalance.

Table 1: **Mixture balancing is robust to model selection without group annotations.** We compare the best class-balancing method during validation with and without group annotations. Both worst-class accuracy [69] and the bias-unsupervised validation score of [60] are effective for model selection without group annotations, often choosing the same method or mixture ratio as worst-group accuracy (WGA) validation. We list the method maximizing each metric and its average WGA over 3 seeds.

Validation Metric	Group Anns	Waterbirds	CelebA	CivilComments
Bias-unsupervised Score	✗	Upsampling (79.9)	Subsetting (74.1)	Mixture 3:1 (77.6)
Worst-class Accuracy	✗	Mixture 2:1 (81.1)	Subsetting (74.1)	Mixture 3:1 (77.6)
Worst-group Accuracy	✓	Mixture 2:1 (81.1)	Subsetting (74.1)	Mixture 3:1 (77.6)

Note on validation. In Figure 2, we plot the best class-imbalance ratio achieved using validation on a group annotated held-out set. While this is a common assumption in the literature [50, 31, 23, 26], it is nevertheless unrealistic when the training set does not have any group annotations. Therefore, we compare with both worst-class accuracy [69] and the *bias-unsupervised validation score* of [60], which do not use any group annotations for model selection. In Table 1 we list the method which maximizes each validation metric as well as its average WGA. Overall, we show both methods are effective for model selection, often choosing the same method or mixture ratio as WGA validation.

Contextualization with previous work. Increasing exposure to majority class data without over-sampling the minority class was previously explored by [26], who proposed averaging the weights of logistic regression models trained on ten independent class-balanced subsets. However, this method only works for *linear* models — as nonlinear models cannot be naively averaged — and requires multiple training runs, which is computationally infeasible for neural networks. In comparison, our mixture method is a simple and efficient alternative which extends easily to nonlinear models.

The catastrophic collapse of class-balanced upsampling and upweighting can be mitigated by a *mixture method*. It increases exposure to majority class data without over-sampling the minority class and can improve baseline WGA beyond either technique.

4 Model scaling improves WGA of class-balanced finetuning

The relationship between overparameterization and group robustness has been well-studied, with often conflicting conclusions [51, 59]. In this section, we study the impact of model scaling on worst-group accuracy in a new setting — finetuning pretrained models — which more closely resembles practical use-cases. Importantly, we evaluate the impact of model scaling *in conjunction with class-balancing* to isolate the impact of group inequities on WGA as a function of model size. We find that with appropriate class-balancing, overparameterization can in fact significantly improve WGA over a very wide range of parameter scales, including before and after the interpolation threshold. On the other hand, scaling on imbalanced datasets or with the wrong balancing technique can harm robustness.

We take advantage of advancements in efficient architectures [61, 67] to finetune pretrained models in a wide range of scales from 3.4M to 101M parameters. We study six different sizes of ImageNet1K-pretrained ConvNeXt-V2 and five different sizes of Book Corpus/English Wikipedia pretrained BERT; specifications for each model size are included in Appendix A.2. Our results are displayed in Figure 3, and we include results for Swin Transformer in Appendix C.

We find that model scaling is beneficial for group robustness in conjunction with appropriate class-balancing, with improvements of up to 12% WGA for interpolating models and 40% WGA for non-interpolating models. This comes in stark contrast to scaling on class-imbalanced datasets or with the wrong class-balancing technique, which shows either a neutral trend or decrease in WGA — the most severe examples being on CivilComments. With respect to interpolating models, CivilComments WGA decreases slightly after the interpolation threshold, while Waterbirds and CelebA continue to improve well beyond interpolation; on the other hand, BERT never interpolates MultiNLI, greatly increasing robustness at scale. It is unclear why Waterbirds and CelebA experience

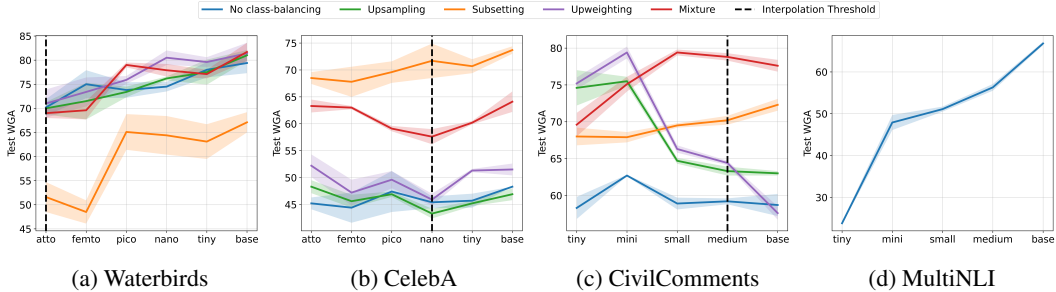


Figure 3: **Scaling class-balanced pretrained models can improve worst-group accuracy.** We finetune each model size starting from pretrained checkpoints and plot the test worst-group accuracy (WGA) as well as the interpolation threshold, where model reaches 100% training accuracy. We find model scaling is generally beneficial for WGA *only in conjunction* with appropriate class-balancing, and scaling on imbalanced datasets or with the wrong method can harm robustness. Note MultiNLI is class-balanced *a priori* and is not interpolated. See Appendix C for training accuracy plots.

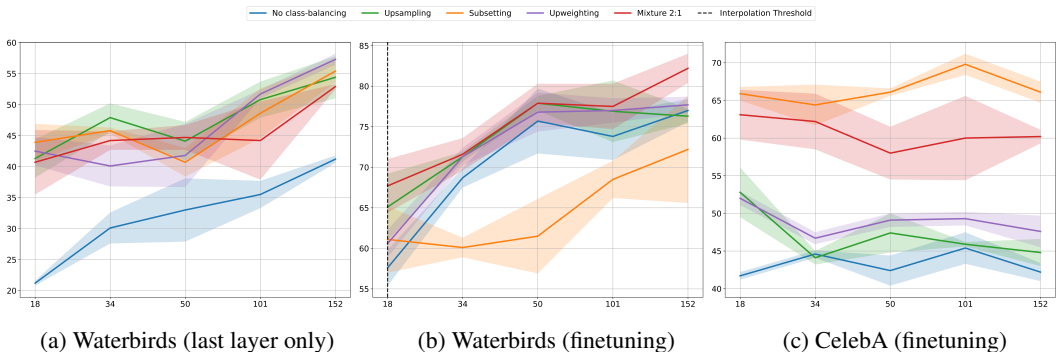


Figure 4: **Class-balancing greatly affects ResNet scaling results of [46].** We contrast the ResNet scaling behavior of [46] — who do not use class-balancing — to the scaling of class-balanced ResNets. We finetune each model size starting from pretrained checkpoints and plot the test worst-group accuracy (WGA), as well as the interpolation threshold, where the model reaches 100% training accuracy. On Waterbirds, we find that class-balancing enables a much more beneficial trend during model scaling. On CelebA, class-balancing greatly increases baseline WGA but does not affect scaling behavior (in contrast to the ConvNeXt-V2 plots in Figure 3). We use SGD for last-layer training and AdamW for full finetuning. See Appendix C for training accuracy plots.

different behavior from CivilComments interpolation — the toy linear model of [51] suggests a benign “spurious-core information ratio”, but a complete understanding is left to future investigation.

The most closely related work to ours is [46], who study the impact of scaling pretrained ResNet models on group robustness. However, because their experiments do not employ any form of class-balancing, their conclusions may be overly pessimistic. We replicate their experiments with our hyperparameters and contrast with our results using class-balancing in Figure 4. We find that class-balancing greatly affects their results: on Waterbirds, class-balancing enables a much more beneficial trend during model scaling regardless of whether a linear probe or the entire model is trained. Moreover, while class-balancing increases baseline WGA on CelebA but does not affect scaling behavior, we observe a more positive WGA trend when scaling ConvNeXt-V2 in Figure 3.

Contextualization with previous work. While previous work has primarily studied either linear probing of pretrained weights or training small models from scratch [51, 59], we study full finetuning of large-scale pretrained models and show that class-balancing can have a major impact on scaling behavior. We compare directly with the most closely related work, [46], and show that class-balancing can either induce strikingly different scaling behavior or greatly increase baseline WGA. Overall, training with class-balancing allows us to isolate the impact of group inequities on robustness and more precisely observe the often-beneficial trend of model scaling for worst-group accuracy.

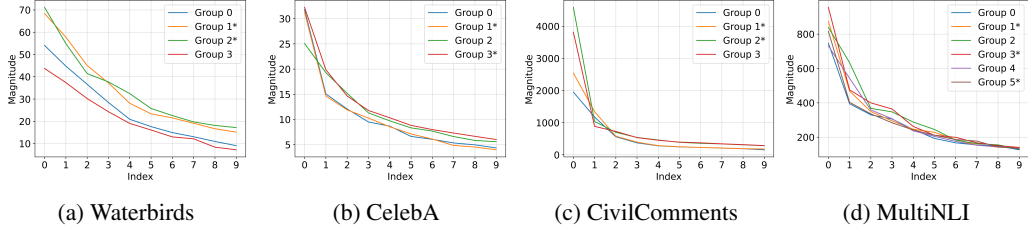


Figure 5: **Group disparities are visible in the top eigenvalues of the group covariance matrices.** We visualize the mean, across 3 experimental trials, of the top 10 eigenvalues of the group covariance matrices for a ConvNeXt-V2 Nano finetuned on Waterbirds and CelebA and a BERT Small finetuned on CivilComments and MultiNLI. The standard deviations are omitted for clarity. The models are finetuned using the best class-balancing method from Section 3 for each dataset. The group numbers are detailed in Table 2 and the minority groups within each class are denoted with an asterisk. The largest λ_1 in each case belongs to a minority group, though it may not be the *worst* group, and minority group eigenvalues are overall larger than majority group eigenvalues within the same class.

While overparameterization can sometimes harm WGA, pretraining and appropriate class-balancing make scaling generally beneficial. Moreover, modern language datasets are complex enough that standard models *do not interpolate*, greatly improving robustness at scale.

5 Spectral imbalance may exacerbate group disparities

In a recent paper, [25] propose *spectral imbalance* of class covariance matrices, or differences in their eigenspectrum, as a source of disparities in accuracy *across classes* even when balanced. Here, we examine whether similar insights hold in the group robustness setting. Our observations reveal surprising nuances in the behavior of *group-wise spectral imbalance*; nevertheless, we conclude that spectral imbalance may play a similar role in modulating WGA after class-balancing is applied.

Let us denote by \mathbf{z}_i the feature vector corresponding to a sample \mathbf{x}_i (*i.e.*, the vectorized output of the *penultimate* layer). Recall from Section 2 that Ω_g is the set of indices of samples which belong to group g . We further define $\bar{\mathbf{z}}_g$ to be the empirical mean of features with group g . To obtain the estimated eigenspectrum, we first compute the empirical covariance matrix for group $g \in \mathcal{G}$ by

$$\Sigma_g = \frac{1}{|\Omega_g|} \sum_{i \in \Omega_g} (\mathbf{z}_i - \bar{\mathbf{z}}_g)(\mathbf{z}_i - \bar{\mathbf{z}}_g)^\top.$$

We then compute the eigenvalue decomposition $\Sigma_g = \mathbf{V}_g \Lambda_g \mathbf{V}_g^{-1}$, where Λ_g is a diagonal matrix with non-negative entries $\lambda_i^{(g)}$ and the columns of \mathbf{V}_g are the eigenvectors of Σ_g . Without loss of generality, we assume $\lambda_1^{(g)} \geq \lambda_2^{(g)} \geq \dots \geq \lambda_m^{(g)}$ where m is the rank of Σ_g .

We compute the group covariance matrices using a ConvNeXt-V2 Nano model for Waterbirds and CelebA, and a BERT Small model for CivilComments and MultiNLI. We plot the top 10 eigenvalues of each group covariance matrix in Figure 5. Even though we finetune with class-balancing, disparities in eigenvalues across groups are clearly visualized in Figure 5, especially for the largest eigenvalues. We include extensions to the top 50 eigenvalues and class covariance matrices in Appendix D.

Close observation of Figure 5 yields interesting findings. First, the group g^* that maximizes $\lambda_1^{(g)}$ in each case belongs to a minority group; though, importantly, it may not belong to the *worst* group. This is different from the findings of [25], who showed that the largest eigenvalues typically belong to the *worst-performing* class. Second, we find that minority group eigenvalues are overall larger than majority group eigenvalues, but only when *conditioned on the class*. A majority group belonging to one class may have larger eigenvalues than a minority group belonging to another class, but there exists a consistent spectral imbalance between majority and minority groups within the same class.⁷

⁷For example, in Figure 5c, the spectrum for group 3 (the majority group within class 1) is larger than the spectrum for group 1 (the minority group within class 0). However, conditioning on the class, we find that the

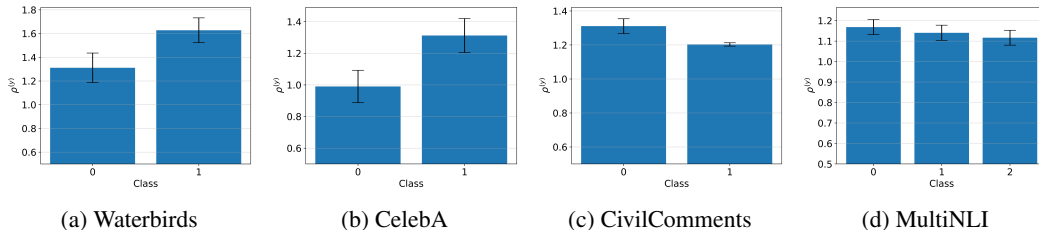


Figure 6: **Group-wise spectral imbalance is apparent once conditioned on the classes.** We plot the mean and standard deviation, across 3 experimental trials, of the intra-class spectral norm ratio $\rho^{(y)}$, or the ratio of the top eigenvalues of the minority and majority group covariance matrices, for each class $y \in \mathcal{Y}$. We compute this metric using a finetuned ConvNeXt-V2 Nano on Waterbirds and CelebA and a finetuned BERT Small on CivilComments and MultiNLI, each using the best class-balancing method from Section 3 for each dataset. The key observation is that $\rho^{(y)}$ is at least one for all classes $y \in \mathcal{Y}$ (except a single seed for class 0 on CelebA), illustrating a group disparity captured by the eigenspectrum once we condition on the classes.

To quantify this group-wise spectral imbalance, we introduce a new metric called the *intra-class spectral norm ratio*. Suppose $g_{\min}(y)$ and $g_{\max}(y)$ are the minority and majority groups within a particular class $y \in \mathcal{Y}$. Then, we define the intra-class spectral norm ratio by $\rho^{(y)} := \lambda_1^{(g_{\min}(y))} / \lambda_1^{(g_{\max}(y))}$. While $\rho^{(y)}$ only considers the top eigenvalue and not the entire spectrum, the *absolute* magnitude of individual eigenvalues was found in [25] to correlate best with worst-class accuracy. We note that $\rho^{(y)}$ considers only the top eigenvalue and not the entire spectrum, since the magnitude of the top eigenvalues was found in [25] to correlate best with worst-class accuracy. We plot the intra-class spectral norm ratios for each dataset in Figure 6; notably, they are always at least one (except for a single seed on CelebA), showing the group disparity captured by the eigenspectrum.

Finally, in Table 5 (deferred to Appendix D), we compare the class with the largest $\rho^{(y)}$ to the class with the largest disparity in group test accuracies, *i.e.*, $\text{Acc}(g_{\max}(y)) - \text{Acc}(g_{\min}(y))$. We see that in most cases these classes correspond, suggesting an *explanatory power* of the intra-class spectral norm ratio. In particular, this correspondence is consistent throughout all trials of CelebA and CivilComments, the most class-imbalanced datasets we study.

Contextualization with previous work. Our spectral analysis of the group covariance matrices is inspired by [25]. We both study class-balanced settings, with the key difference that they study *class* disparities instead of group disparities. However, we show a more nuanced impact of spectral imbalance across both classes and groups, *i.e.*, spectral imbalance is more prevalent *between majority and minority groups within to the same class*, rather than across groups globally.

Spectral imbalance in the group covariance matrices may exacerbate group disparities even when the classes are balanced. While the worst-group covariance may not have largest spectral norm, the minority group spectra are consistently larger *conditioned on the class*.

6 Discussion

In this paper, we identified nuanced impacts of class-balancing and model scaling on worst-group accuracy, as well as a spectral imbalance in the group covariance matrices. Overall, our work calls for a more thorough investigation of generalization in the presence of spurious correlations to unify the sometimes contradictory perspectives in the literature. We hope that, as the community continues to develop group robustness methods with increasing performance and complexity, researchers and practitioners alike remain cognizant of the disproportionate impact of the details.

spectrum for group 2 (the minority group within class 1) is larger than that of group 3, and the spectrum of group 1 is larger than that of group 0 (the majority group within class 0).

Acknowledgments. We thank Google Cloud for the gift of compute credits, Jacob Abernethy for additional compute assistance, and Chiraag Kaushik for helpful discussions. T.L. acknowledges support from the DoD NDSEG Fellowship. V.M. acknowledges support from the NSF (awards CCF-223915 and IIS-2212182), Google Research, Adobe Research and Amazon Research.

References

- [1] Sara Beery, Grant van Horn, and Pietro Perona. Recognition in terra incognita. In *European Conference on Computer Vision (ECCV)*, 2018.
- [2] Su Lin Blodgett, Lisa Green, and Brendan O’Connor. Demographic dialectal variation in social media: A case study of African-American English. In *Empirical Methods in Natural Language Processing (EMNLP)*, 2016.
- [3] Daniel Borkan, Lucas Dixon, Jeffrey Sorenson, Nithium Thain, and Lucy Vasserman. Nuanced metrics for measuring unintended bias with real data for text classification. In *World Wide Web (WWW)*, 2019.
- [4] Mateusz Buda, Atsuto Maki, and Maciej A Mazurowski. A systematic study of the class imbalance problem in convolutional neural networks. *Neural Networks*, 106(1):249–259, 2018.
- [5] Joy Buolamwini and Timnit Gebru. Gender shades: Intersectional accuracy disparities in commercial gender classification. In *Conference on Fairness, Accountability, and Transparency in Machine Learning (FATML)*, 2018.
- [6] Niladri S Chatterji, Saminul Haque, and Tatsunori Hashimoto. Undersampling is a minimax optimal robustness intervention in nonparametric classification. *Transactions on Machine Learning Research (TMLR)*, 2023.
- [7] Kamalika Chaudhuri, Kartik Ahuja, Martin Arjovsky, and David Lopez-Paz. Why does throwing away data improve worst-group error? In *International Conference on Machine Learning (ICML)*, 2023.
- [8] Alexandra Chouldechova. Fair prediction with disparate impact: A study of bias in recidivism prediction instruments. In *Conference on Fairness, Accountability, and Transparency in Machine Learning (FATML)*, 2016.
- [9] Jacob Devlin, Ming-Wei Chang, Kenton Lee, and Kristina Toutanova. BERT: pre-training of deep bidirectional transformers for language understanding. In *North American Association for Computational Linguistics (NAACL)*, 2019.
- [10] William Falcon and the PyTorch Lightning maintainers and contributors. PyTorch Lightning. *GitHub*, 2019.
- [11] Robert Geirhos, Patricia Rubisch, Claudio Michaelis, Matthias Bethge, Felix A. Wichmann, and Wieland Brendel. ImageNet-trained CNNs are biased towards texture; increasing shape bias improves accuracy and robustness. In *International Conference on Learning Representations (ICLR)*, 2019.
- [12] Robert Geirhos, Jörn-Henrik Jacobsen, Claudio Michaelis, Richard Zemel, Wieland Brendel, Matthias Bethge, and Felix A. Wichmann. Shortcut learning in deep neural networks. *Nature Machine Intelligence*, 2:665–673, 2020.
- [13] Behrooz Ghorbani, Song Mei, Theodor Misiakiewicz, and Andrea Montanari. Limitations of lazy training of two-layers neural network. In *Conference on Neural Information Processing Systems (NeurIPS)*, 2019.
- [14] Suchin Gururangan, Swabha Swayamdipta, Omer Levy, Roy Schwartz, Samuel Bowman, and Noah A. Smith. Annotation artifacts in natural language inference data. In *North American Association for Computational Linguistics (NAACL)*, 2018.
- [15] Guo Haixiang, Li Yijing, Jennifer Shang, Gu Mingyun, Huang Yuanyue, and Gong Bing. Learning from class-imbalanced data: Review of methods and applications. *Expert Systems with Applications*, 73(1):220–239, 2017.

- [16] Charles R. Harris, K. Jarrod Millman, Stéfan J. van der Walt, Ralf Gommers, Pauli Virtanen, David Cournapeau, Eric Wieser, Julian Taylor, Sebastian Berg, Nathaniel J. Smith, Robert Kern, Matti Picus, Stephan Hoyer, Marten H. van Kerkwijk, Matthew Brett, Allan Haldane, Jaime Fernández del Río, Mark Wiebe, Pearu Peterson, Pierre Gérard-Marchant, Kevin Sheppard, Tyler Reddy, Warren Weckesser, Hameer Abbasi, Christoph Gohlke, and Travis E. Oliphant. Array programming with NumPy. *Nature*, 585(1):357–362, 2020.
- [17] Tatsunori B. Hashimoto, Megha Srivastava, Hongseok Namkoong, and Percy Liang. Fairness without demographics in repeated loss minimization. In *International Conference on Machine Learning (ICML)*, 2018.
- [18] Kaiming He, Xiangyu Zhang, Shaoqing Ren, and Jian Sun. Deep residual learning for image recognition. In *Conference on Computer Vision and Pattern Recognition (CVPR)*, 2016.
- [19] Dan Hendrycks, Steven Basart, Norman Mu, Saurav Kadavath, Frank Wang, Evan Dorundo, Rahul Desai, Tyler Zhu, Samyak Parajuli, Mike Guo, Dawn Song, Jacob Steinhardt, and Justin Gilmer. The many faces of robustness: A critical analysis of out-of-distribution generalization. In *International Conference on Computer Vision (ICCV)*, 2021.
- [20] Dirk Hovy and Anders Søgaard. Tagging performance correlates with author age. In *Association for Computational Linguistics (ACL)*, 2015.
- [21] John D. Hunter. Matplotlib: A 2D graphics environment. *Computing in Science & Engineering*, 9(3):90–95, 2007.
- [22] Badr Youbi Idrissi, Martín Arjovsky, Mohammad Pezeshki, and David Lopez-Paz. Simple data balancing achieves competitive worst-group-accuracy. In *Conference on Causal Learning and Reasoning (CLeaR)*, 2022.
- [23] Pavel Izmailov, Polina Kirichenko, Nate Gruver, and Andrew Gordon Wilson. On feature learning in the presence of spurious correlations. In *Conference on Neural Information Processing Systems (NeurIPS)*, 2022.
- [24] Nathalie Japkowicz and Shaju Stephen. The class imbalance problem: A systematic study. *Intelligent Data Analysis*, 6(5):429–449, 2002.
- [25] Chiraag Kaushik, Ran Liu, Chi-Heng Lin, Amrit Khara, Matthew Y Jin, Wenrui Ma, Vidya Muthukumar, and Eva L Dyer. Balanced data, imbalanced spectra: Unveiling class disparities with spectral imbalance. In *International Conference on Machine Learning (ICML)*, 2024.
- [26] Polina Kirichenko, Pavel Izmailov, and Andrew Gordon Wilson. Last layer re-training is sufficient for robustness to spurious correlations. In *International Conference on Learning Representations (ICLR)*, 2023.
- [27] Pang Wei Koh, Shiori Sagawa, Henrik Marklund, Sang Michael Xie, Marvin Zhang, Akshay Balsubramani, Weihua Hu, Michihiro Yasunaga, Richard Lanus Phillips, Sara Beery, Jure Leskovec, Anshul Kundaje, Emma Pierson, Sergey Levine, Chelsea Finn, and Percy Liang. WILDS: A benchmark of in-the-wild distribution shifts. In *International Conference on Machine Learning (ICML)*, 2021.
- [28] Tyler LaBonte. Milkshake: Quick and extendable experimentation with classification models. <http://github.com/tmlabonte/milkshake>, 2023.
- [29] Tyler LaBonte, Vidya Muthukumar, and Abhishek Kumar. Towards last-layer retraining for group robustness with fewer annotations. In *Conference on Neural Information Processing Systems (NeurIPS)*, 2023.
- [30] Yoonho Lee, Huaxiu Yao, and Chelsea Finn. Diversify and disambiguate: Learning from underspecified data. In *International Conference on Learning Representations (ICLR)*, 2023.
- [31] Evan Zheran Liu, Behzad Haghgoo, Annie S. Chen, Aditi Raghunathan, Pang Wei Koh, Shiori Sagawa, Percy Liang, and Chelsea Finn. Just train twice: Improving group robustness without training group information. In *International Conference on Machine Learning (ICML)*, 2021.

- [32] Ze Liu, Yutong Lin, Yue Cao, Han Hu, Yixuan Wei, Zheng Zhang, Stephen Lin, and Baining Guo. Swin transformer: Hierarchical vision transformer using shifted windows. In *International Conference on Computer Vision (ICCV)*, 2021.
- [33] Ziwei Liu, Ping Luo, Xiaogang Wang, and Xiaoou Tang. Deep learning face attributes in the wild. In *International Conference on Computer Vision (ICCV)*, 2015.
- [34] Ilya Loshchilov and Frank Hutter. Decoupled weight decay regularization. In *International Conference on Learning Representations (ICLR)*, 2019.
- [35] Subha Maity, Saptarshi Roy, Songkai Xue, Mikhail Yurochkin, and Yuekai Sun. How does overparametrization affect performance on minority groups? *arXiv preprint arXiv:2206.03515*, 2022.
- [36] Tom McCoy, Ellie Pavlick, and Tal Linzen. Right for the wrong reasons: Diagnosing syntactic heuristics in natural language inference. In *Association for Computational Linguistics (ACL)*, 2019.
- [37] Mazda Moayeri, Wenxiao Wang, Sahil Singla, and Soheil Feizi. Spuriousity rankings: Sorting data to measure and mitigate biases. In *Conference on Neural Information Processing Systems (NeurIPS)*, 2023.
- [38] Preetum Nakkiran, Gal Kaplun, Yamini Bansal, Tristan Yang, Boaz Barak, and Ilya Sutskever. Deep double descent: Where bigger models and more data hurt. *Journal of Statistical Mechanics: Theory and Experiment*, 2021(12):124003, 2021.
- [39] Junhyun Nam, Jaehyung Kim, Jaeho Lee, and Jinwoo Shin. Spread spurious attribute: Improving worst-group accuracy with spurious attribute estimation. In *International Conference on Learning Representations (ICLR)*, 2022.
- [40] Behnam Neyshabur, Ryota Tomioka, and Nathan Srebro. In search of the real inductive bias: On the role of implicit regularization in deep learning. In *International Conference on Learning Representations (ICLR)*, 2015.
- [41] Timothy Niven and Hung-Yu Kao. Probing neural network comprehension of natural language arguments. In *Association for Computational Linguistics (ACL)*, 2019.
- [42] Luke Oakden-Rayner, Jared Dunnmon, Gustavo Carneiro, and Christopher Ré. Hidden stratification causes clinically meaningful failures in machine learning for medical imaging. In *Conference on Neural Information Processing Systems (NeurIPS) Workshop on Machine Learning for Health*, 2019.
- [43] Matteo Pagliardini, Martin Jaggi, François Fleuret, and Sai Praneeth Karimireddy. Agree to disagree: Diversity through disagreement for better transferability. In *International Conference on Learning Representations (ICLR)*, 2023.
- [44] Adam Paszke, Sam Gross, Soumith Chintala, Gregory Chanan, Edward Yang, Zachary DeVito, Zeming Lin, Alban Desmaison, Luca Antiga, and Adam Lerer. Automatic differentiation in PyTorch. In *Conference on Neural Information Processing Systems (NeurIPS) Workshop on Automatic Differentiation*, 2017.
- [45] Adam Paszke, Sam Gross, Francisco Massa, Adam Lerer, James Bradbury, Gregory Chanan, Trevor Killeen, Zeming Lin, Natalia Gimelshein, Luca Antiga, Alban Desmaison, Andreas Köpf, Edward Z. Yang, Zach DeVito, Martin Raison, Alykhan Tejani, Sasank Chilamkurthy, Benoit Steiner, Lu Fang, Junjie Bai, and Soumith Chintala. PyTorch: An imperative style, high-performance deep learning library. In *Conference on Neural Information Processing Systems (NeurIPS)*, 2019.
- [46] Alan Pham, Eunice Chan, Vikranth Srivatsa, Dhruva Ghosh, Yaoqing Yang, Yaodong Yu, Ruiqi Zhong, Joseph E Gonzalez, and Jacob Steinhardt. The effect of model size on worst-group generalization. In *Conference on Neural Information Processing Systems (NeurIPS) Workshop on Distribution Shifts*, 2021.

- [47] Shikai Qiu, Andres Potapczynski, Pavel Izmailov, and Andrew Gordon Wilson. Simple and fast group robustness by automatic feature reweighting. In *International Conference on Machine Learning (ICML)*, 2023.
- [48] Amir Rosenfeld, Richard Zemel, and John K. Tsotsos. The elephant in the room. *arXiv preprint 1808.03305*, 2018.
- [49] Olga Russakovsky, Jia Deng, Hao Su, Jonathan Krause, Sanjeev Satheesh, Sean Ma, Zhiheng Huang, Andrej Karpathy, Aditya Khosla, Michael Bernstein, Alexander C. Berg, and Li Fei-Fei. ImageNet large scale visual recognition challenge. *International Journal of Computer Vision (IJCV)*, 115(1):211–252, 2015.
- [50] Shiori Sagawa, Pang Wei Koh, Tatsunori B. Hashimoto, and Percy Liang. Distributionally robust neural networks for group shifts: On the importance of regularization for worst-case generalization. In *International Conference on Learning Representations (ICLR)*, 2020.
- [51] Shiori Sagawa, Aditi Raghunathan, Pang Wei Koh, and Percy Liang. An investigation of why overparameterization exacerbates spurious correlations. In *International Conference on Machine Learning (ICML)*, 2020.
- [52] Rakshith Shetty, Bernt Schiele, and Mario Fritz. Not using the car to see the sidewalk: Quantifying and controlling the effects of context in classification and segmentation. In *Conference on Computer Vision and Pattern Recognition (CVPR)*, 2019.
- [53] Ravid Shwartz-Ziv, Micah Goldblum, Yucen Lily Li, C Bayan Bruss, and Andrew Gordon Wilson. Simplifying neural network training under class imbalance. In *Conference on Neural Information Processing Systems (NeurIPS)*, 2023.
- [54] Sahil Singla and Soheil Feizi. Salient ImageNet: how to discover spurious features in deep learning? In *International Conference on Learning Representations (ICLR)*, 2022.
- [55] Nathan Stromberg, Rohan Ayyagari, Monica Welfert, Sanmi Koyejo, and Lalitha Sankar. Robustness to subpopulation shift with domain label noise via regularized annotation of domains. *arXiv preprint arXiv:2402.11039*, 2024.
- [56] Saeid Asgari Taghanaki, Aliasghar Khani, Fereshte Khani, Ali Gholami, Linh Trana, Ali Mahdavi-Amiri, and Ghassan Hamarneh. MaskTune: mitigating spurious correlations by forcing to explore. In *Conference on Neural Information Processing Systems (NeurIPS)*, 2022.
- [57] Rachael Tatman. Gender and dialect bias in YouTube’s automatic captions. In *Association for Computational Linguistics (ACL) Workshop on Ethics in Natural Language Processing*, 2017.
- [58] TorchVision maintainers and contributors. TorchVision: PyTorch’s computer vision library. *GitHub*, 2016.
- [59] Nilesh Tripuraneni, Ben Adlam, and Jeffrey Pennington. Overparameterization improves robustness to covariate shift in high dimensions. In *Conference on Neural Information Processing Systems (NeurIPS)*, 2021.
- [60] Christos Tsirigotis, Joao Monteiro, Pau Rodriguez, David Vazquez, and Aaron Courville. Group robust classification without any group information. In *Conference on Neural Information Processing Systems (NeurIPS)*, 2023.
- [61] Iulia Turc, Ming-Wei Chang, Kenton Lee, and Kristina Toutanova. Well-read students learn better: On the importance of pre-training compact models. *arXiv preprint 1908.08962*, 2019.
- [62] Vladimir Vapnik. *Statistical Learning Theory*. Wiley, 1998.
- [63] Catherine Wah, Steve Branson, Peter Welinder, Pietro Perona, and Serge Belongie. The Caltech-UCSD birds-200-2011 dataset. Technical report, California Institute of Technology, 2011.
- [64] Peter Welinder, Steve Branson, Takeshi Mita, Catherine Wah, Florian Schroff, Serge Belongie, and Pietro Perona. Caltech-UCSD birds 200. Technical report, California Institute of Technology, 2010.

- [65] Adina Williams, Nikita Nangia, and Samuel Bowman. A broad-coverage challenge corpus for sentence understanding through inference. In *North American Association for Computational Linguistics (NAACL)*, 2018.
- [66] Thomas Wolf, Lysandre Debut, Victor Sanh, Julien Chaumond, Clement Delangue, Anthony Moi, Pierric Cistac, Tim Rault, Remi Louf, Morgan Funtowicz, Joe Davison, Sam Shleifer, Patrick von Platen, Clara Ma, Yacine Jernite, Julien Plu, Canwen Xu, Teven Le Scao, Sylvain Gugger, Mariama Drame, Quentin Lhoest, and Alexander Rush. Transformers: State-of-the-art natural language processing. In *Conference on Empirical Methods in Natural Language Processing (EMNLP) System Demonstrations*, 2020.
- [67] Sanghyun Woo, Shoubhik Debnath, Ronghang Hu, Xinlei Chen, Zhuang Liu, In So Kweon, and Saining Xie. ConvNeXt V2: co-designing and scaling convnets with masked autoencoders. In *Conference on Computer Vision and Pattern Recognition (CVPR)*, 2023.
- [68] Kai Yuanqing Xiao, Logan Engstrom, Andrew Ilyas, and Aleksander Mądry. Noise or signal: The role of image backgrounds in object recognition. In *International Conference on Learning Representations (ICLR)*, 2021.
- [69] Yuzhe Yang, Haoran Zhang, Dina Katabi, and Marzyeh Ghassemi. Change is hard: A closer look at subpopulation shift. In *International Conference on Machine Learning (ICML)*, 2023.
- [70] John R. Zech, Marcus A. Badgeley, Manway Liu, Anthony B. Costa, Joseph J. Titano, and Eric Karl Oermann. Variable generalization performance of a deep learning model to detect pneumonia in chest radiographs: A cross-sectional study. *PLoS Medicine*, 15:e1002683, 2018.
- [71] Chiyuan Zhang, Samy Bengio, Moritz Hardt, Benjamin Recht, and Oriol Vinyals. Understanding deep learning (still) requires rethinking generalization. *Communications of the ACM*, 64(3): 107–115, 2021.
- [72] Michael Zhang, Nimit S. Sohoni, Hongyang R. Zhang, Chelsea Finn, and Christopher Ré. Correct-n-contrast: A contrastive approach for improving robustness to spurious correlations. In *International Conference on Machine Learning (ICML)*, 2022.
- [73] Yukun Zhu, Ryan Kiros, Rich Zemel, Ruslan Salakhutdinov, Raquel Urtasun, Antonio Torralba, and Sanja Fidler. Aligning books and movies: Towards story-like visual explanations by watching movies and reading books. In *International Conference on Computer Vision (ICCV)*, 2015.

A Additional Details for Section 2

A.1 Dataset Composition

Table 2: **Dataset composition.** We study four well-established benchmarks for group robustness across vision and language tasks. The class probabilities change dramatically when **conditioned on the spurious feature**. Note that Waterbirds is the only dataset that has a distribution shift and MultiNLI is the only dataset which is class-balanced *a priori*. The minority groups within each class are denoted by an asterisk in the “Num” column. Probabilities may not sum to 1 due to rounding.

Dataset	Group g			Training distribution \hat{p}			Data quantity		
	Num	Class y	Spurious s	$\hat{p}(y)$	$\hat{p}(g)$	$\hat{p}(y s)$	Train	Val	Test
Waterbirds	0	landbird	land	.768	.730	.984	3498	467	2225
	1*	landbird	water		.038	.148	184	466	2225
	2*	waterbird	land	.232	.012	.016	56	133	642
	3	waterbird	water		.220	.852	1057	133	642
CelebA	0	non-blond	female	.851	.440	.758	71629	8535	9767
	1*	non-blond	male		.411	.980	66874	8276	7535
	2	blond	female	.149	.141	.242	22880	2874	2480
	3*	blond	male		.009	.020	1387	182	180
CivilComments	0	neutral	no identity	.887	.551	.921	148186	25159	74780
	1*	neutral	identity		.336	.836	90337	14966	43778
	2*	toxic	no identity	.113	.047	.079	12731	2111	6455
	3	toxic	identity		.066	.164	17784	2944	8769
MultiNLI	0	contradiction	no negation	.333	.279	.300	57498	22814	34597
	1*	contradiction	negation		.054	.761	11158	4634	6655
	2	entailment	no negation	.334	.327	.352	67376	26949	40496
	3*	entailment	negation		.007	.104	1521	613	886
	4	neither	no negation	.333	.323	.348	66630	26655	39930
5*	neither	negation	.010		.136	1992	797	1148	

A.2 Training details

We utilize ResNet [18], ConvNeXt-V2 [67], and Swin Transformer [32] models pretrained on ImageNet-1K [49] for Waterbirds and CelebA, and a BERT [9] model pretrained on Book Corpus [73] and English Wikipedia for CivilComments and MultiNLI. These pretrained models are used as the initialization for ERM finetuning under the cross-entropy loss. We use standard ImageNet normalization with standard flip and crop data augmentation for the vision tasks and BERT tokenization for the language tasks [23]. Our implementation uses the following packages: NumPy [16], PyTorch [44, 45], Lightning [10], TorchVision [58], Matplotlib [21], Transformers [66], and Milkshake [28].

To our knowledge, the licenses of Waterbirds and CelebA are unknown. CivilComments is released under the CC0 license, and information about MultiNLI’s license may be found in [65].

Our experiments were conducted on four Google Cloud Platform (GCP) 16GB Nvidia Tesla P100 GPUs and two local 24GB Nvidia RTX A5000 GPUs. The spectral imbalance experiments in Section 5 were conducted on a GCP system with a 16-core CPU and 128GB of RAM. We believe our work could be reproduced for under \$5000 in GCP compute credits, with a majority of that compute going towards running experiments over multiple random seeds.

We list model scaling parameters in Table 3 and hyperparameters used for each dataset in Table 4. ConvNeXt-V2, ResNet and Swin Transformers are composed of four separate “stages”, and we list the depths of these stages individually in Table 3. All of these configurations are standard in the literature. The smaller BERT models were introduced by [61]. We perform model selection only for our mixture balancing method (see Table 1) and not for the ERM finetuning hyperparameters, most of which are standard in the literature [50, 22, 23]. For the last-layer training experiments in Figure 4 and Figure 11, we use SGD with learning rate 10^{-3} and train for 20 epochs. Different from previous work, we train CelebA for about $3\times$ more gradient steps than usual to ensure convergence, and we

double the batch size for CivilComments and MultiNLI to increase training stability (we also double the epochs to hold the number of gradient steps constant).

Table 3: Model scaling parameters.

(a) ConvNeXt-V2 parameters.				(b) BERT parameters.			
Size	Width	Depth (4 stages)	Params	Size	Width	Depth	Params
Atto	40	(2, 2, 6, 2)	3.4M	Tiny	2	128	4.4M
Femto	48	(2, 2, 6, 2)	4.8M	Mini	4	256	11.2M
Pico	64	(2, 2, 6, 2)	8.6M	Small	4	512	28.8M
Nano	80	(2, 2, 8, 2)	15.0M	Medium	8	512	41.4M
Tiny	96	(3, 3, 9, 3)	27.9M	Base	12	768	109M
Base	128	(3, 3, 27, 3)	87.7M				

(c) ResNet parameters.			
Size	Width (4 stages)	Depth (4 stages)	Params
18	(64, 128, 256, 512)	(2, 2, 2, 2)	11.2M
34	(64, 128, 256, 512)	(3, 4, 6, 3)	21.3M
50	(256, 512, 1024, 2048)	(3, 4, 6, 3)	23.5M
101	(256, 512, 1024, 2048)	(3, 4, 23, 3)	42.5M
152	(256, 512, 1024, 2048)	(3, 8, 36, 3)	58.1M

(d) Swin Transformer parameters.			
Size	Width	Depth (4 stages)	Params
Tiny	96	(2, 2, 6, 2)	29M
Small	96	(2, 2, 18, 2)	50M
Base	128	(2, 2, 18, 2)	88M

Table 4: ERM finetuning hyperparameters.

Dataset	Optimizer	Initial LR	LR schedule	Batch size	Weight decay	Epochs
Waterbirds	AdamW	1×10^{-5}	Cosine	32	1×10^{-4}	100
CelebA	AdamW	1×10^{-5}	Cosine	32	1×10^{-4}	20
CivilComments	AdamW	1×10^{-5}	Linear	32	1×10^{-4}	20
MultiNLI	AdamW	1×10^{-5}	Linear	32	1×10^{-4}	20

B Additional Experiments for Section 3

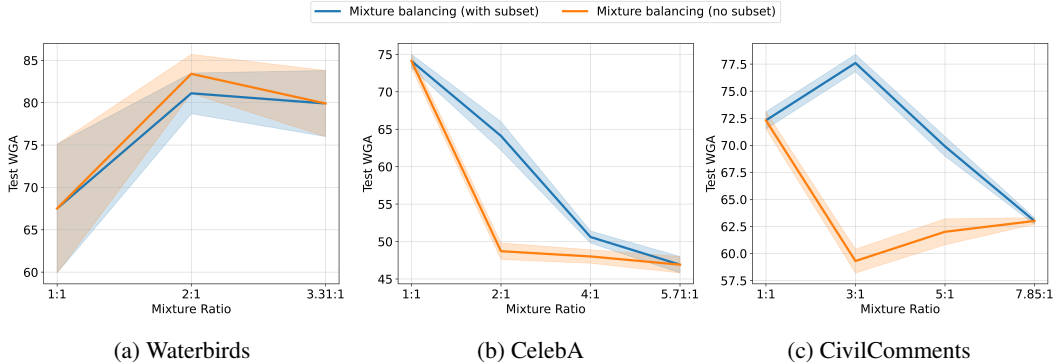


Figure 7: **Mixture balancing ablation studies.** We perform two ablation studies on our mixture balancing method. First, we vary the class-imbalance ratio across the x axis. On the left-hand side, using a class-imbalance ratio of 1:1 reduces to the subsetting technique; on the right-hand side, using the original class-imbalance ratio in the dataset reduces to upsampling. Second, we perform an ablation of whether subsetting is essential in mixture balancing. We plot our proposed method (which takes a subset of data based on the class-imbalance ratio, then performs upsampling) against the same method without subsetting, instead adjusting the class probabilities on the entire dataset as specified by the class-imbalance ratio. MultiNLI is class-balanced *a priori*, so we do not include it here.

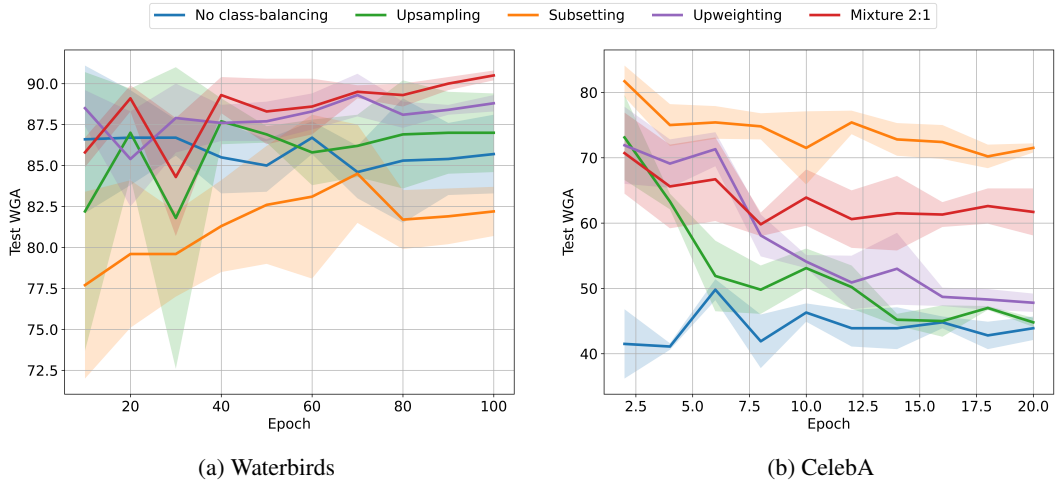


Figure 8: **Balancing behavior is consistent with Swin Transformer.** We demonstrate the effectiveness of our class-balanced *mixture method* when used in conjunction with a Swin Transformer (compare to the ConvNeXt-V2 results in Figure 2). Overall, we find our results are consistent across pretrained model families, with the model affecting the raw accuracies but typically not the relative performance of class-balancing techniques. We also corroborate the poor performance of subsetting on Waterbirds and the catastrophic collapse of upsampling and upweighting on Celeba from Figure 1.

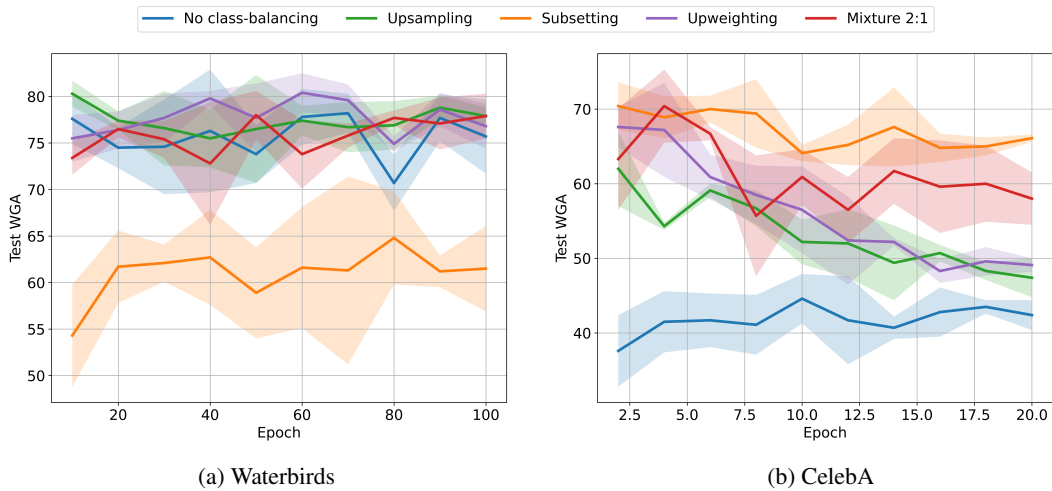


Figure 9: **Balancing behavior is consistent with ResNet model family.** We demonstrate the effectiveness of our class-balanced *mixture method* on another model family, ResNet (compare to the ConvNeXt-V2 results in Figure 2). Again, we find that our results are consistent and that the model architecture affects the raw accuracies but typically not the relative performance of class-balancing techniques. We also corroborate the poor performance of subsetting on Waterbirds and the catastrophic collapse of upsampling and upweighting on Celeba from Figure 1.

C Additional Experiments for Section 4

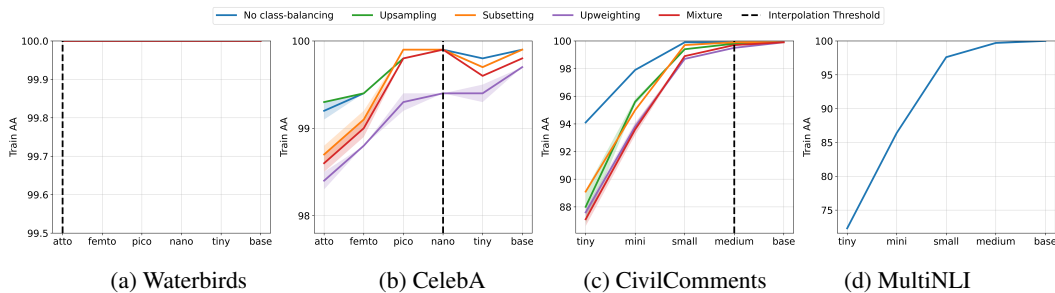


Figure 10: **Average accuracy of scaled models.** We finetune each model size starting from pretrained checkpoints and plot the train average accuracy (AA) as well as the interpolation threshold, where *at least one seed* of the non-class-balanced model reaches 100% training accuracy. (For example, CelebA does not interpolate with all three seeds). Average accuracy consistently increases with model size regardless of class-balancing, implying the scaling dynamics for AA and WGA are starkly different. Note that MultiNLI is class-balanced *a priori* and does not interpolate at any size.

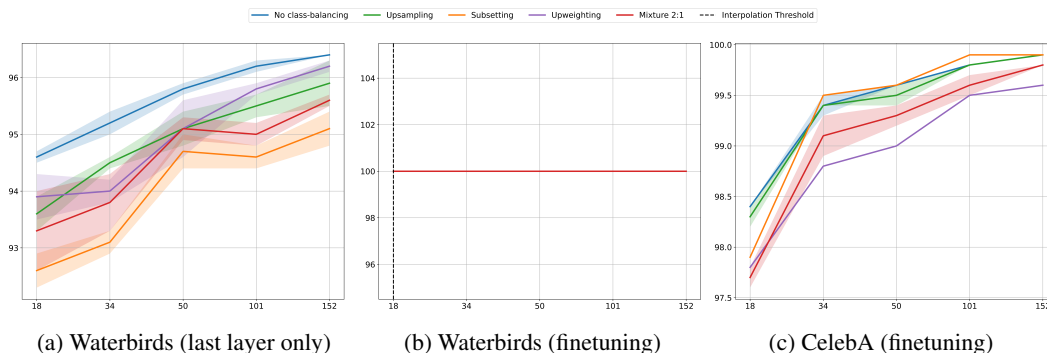


Figure 11: **Average accuracy of scaled ResNets.** We contrast the ResNet scaling behavior of [46] — who do not use class-balancing — to the scaling of class-balanced ResNets. We finetune each model size starting from pretrained checkpoints and plot the train average accuracy (AA) as well as the interpolation threshold, where the model reaches 100% training accuracy. Similarly to Figure 10, average accuracy consistently increases with model size. We use SGD for last-layer training and AdamW for full finetuning.

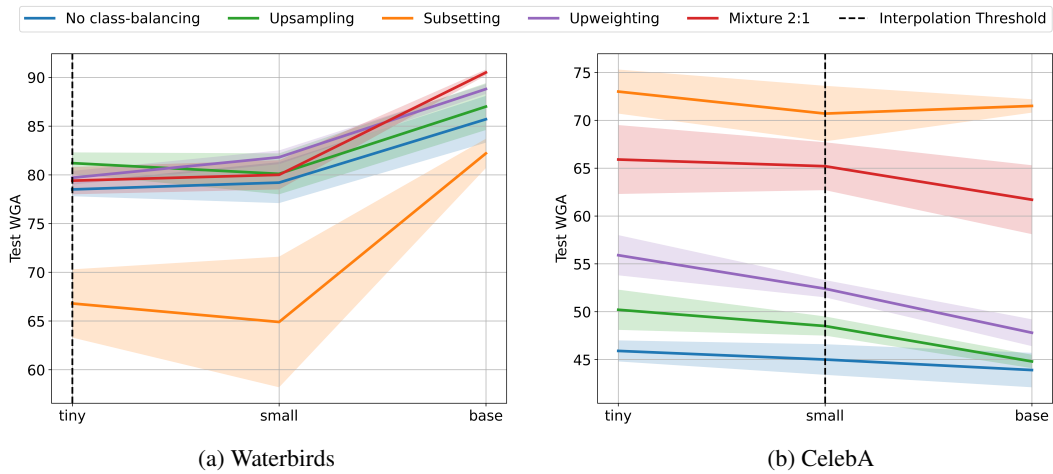


Figure 12: **Scaling behavior is consistent with Swin Transformer.** We exhibit the model scaling behaviour of a Swin Transformer, and compare it to that of a ConvNeXt-V2 (shown in Figure 3). We see that the scaling behaviour is consistent across pretrained model families, with the model affecting the raw accuracies but not the relative performance of class-balancing techniques.

D Additional Experiments for Section 5

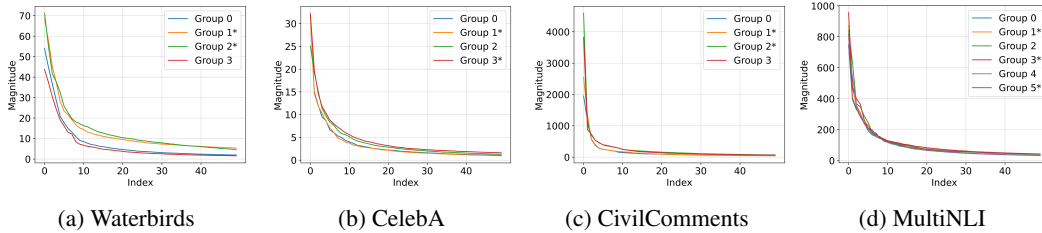


Figure 13: **Additional eigenvalues of the group covariance matrices.** In contrast to Figure 5, we visualize the top 50 eigenvalues of the group covariance matrices for a ConvNeXt-V2 Nano finetuned on Waterbirds and CelebA and a BERT Small finetuned on CivilComments and MultiNLI. The models are finetuned using the best class-balancing method from Section 3 for each dataset. The group numbers are detailed in Table 2 and minority groups are marked with an asterisk. It becomes difficult to distinguish patterns between the groups in the lower eigenvalues, which is why we focus only on local properties of the top eigenvalues (*e.g.*, the spectral norm and the relative ordering of the groups). With that said, it would be interesting to explore power-law decay metrics [25], which characterize relatively global properties of the eigenspectrum, in future work.

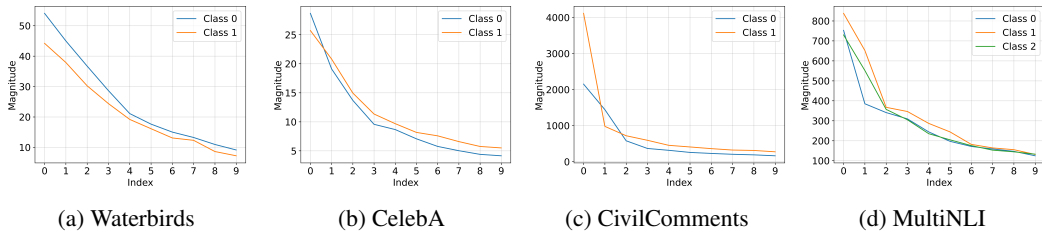


Figure 14: **Class disparities are visible in the top eigenvalues of the class covariance matrices.** We visualize the mean, across 3 experimental trials, of the top 10 eigenvalues of the class covariance matrices for a ConvNeXt-V2 Nano finetuned on Waterbirds and CelebA and a BERT Small finetuned on CivilComments and MultiNLI. The standard deviations are omitted for clarity. The models are finetuned using the best class-balancing method from Section 3 for each dataset. The class numbers are detailed in Table 2. The minority class eigenvalues for CelebA and CivilComments are overall larger, while the reverse is true for Waterbirds, a slightly different conclusion than [25].

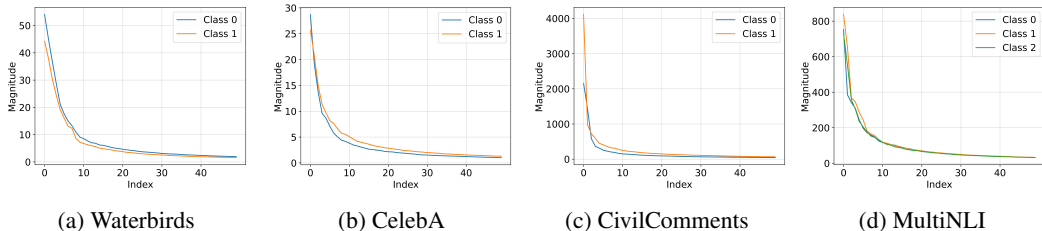


Figure 15: **Additional eigenvalues of the class covariance matrices.** In contrast to Figure 14, we visualize the top 50 eigenvalues of the class covariance matrices for a ConvNeXt-V2 Nano finetuned on Waterbirds and CelebA and a BERT Small finetuned on CivilComments and MultiNLI. The models are finetuned using the best class-balancing method from Section 3 for each dataset. The class numbers are detailed in Table 2. Similar to the groups, it becomes difficult to distinguish patterns between the classes in the lower eigenvalues, which is why we again focus only on local properties of the top eigenvalues (*e.g.*, the spectral norm and the relative ordering of the classes).

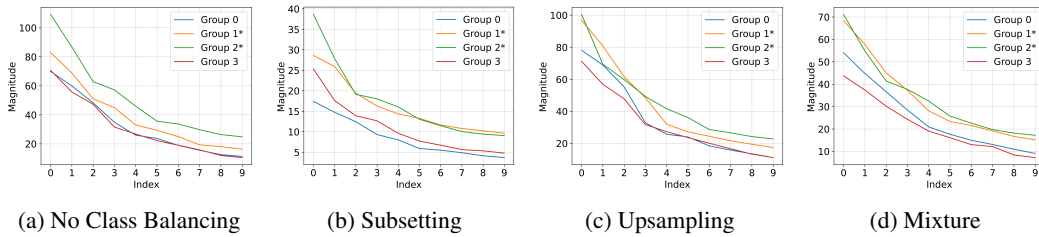


Figure 16: **Group eigenvalue decay is consistent across balancing methods.** We visualize the mean, across 3 experimental trials, of the top 10 eigenvalues of the group covariance matrices for a ConvNeXt-V2 Nano finetuned on Waterbirds across all class-balancing methods. The standard deviations are omitted for clarity. Overall, we found that the magnitude of the eigenvalues is significantly affected by the chosen class-balancing method. However, the relative ordering of minority/majority group eigenvalues is consistent across class-balancing techniques. We note that the most drastic changes in the spectrum are induced by the subsetting method, which has the worst WGA by far for the Waterbirds dataset. These results suggest that optimal class-balancing may bring about additional stability in the representation.

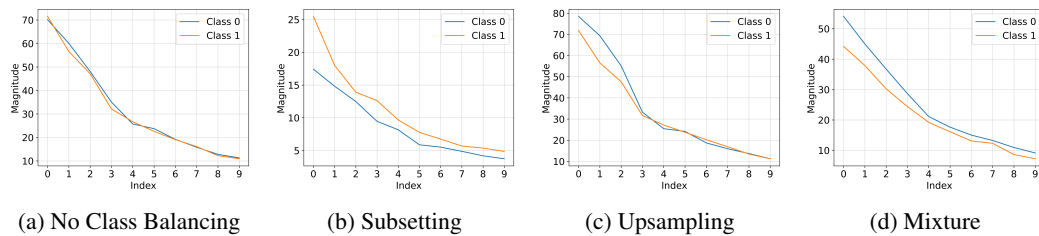


Figure 17: **Class eigenvalue decay is consistent across balancing methods.** We visualize the mean, across 3 experimental trials, of the top 10 eigenvalues of the class covariance matrices for a ConvNeXt-V2 Nano finetuned on Waterbirds across all class-balancing methods. The standard deviations are omitted for clarity. Overall, we found that the magnitude of the eigenvalues is significantly affected by the chosen class-balancing method. However, the relative ordering of minority/majority group eigenvalues is consistent across class-balancing techniques. We note that the most drastic changes in the spectrum are induced by the subsetting method, which has the worst WGA by far for the Waterbirds dataset. These results suggest that optimal class-balancing may bring about additional stability in the representation.

Table 5: **Correspondence between $\rho^{(y)}$ and intra-class group accuracy disparity.** We compare $\rho^{(y)}$, the intra-class spectral norm ratio, to the difference in intra-class group accuracy. Each row represents a different experimental seed. Each cell contains a tuple with the class label for the class with largest value of $\rho^{(y)}$ paired with the class label for the class with the largest intra-class group test accuracy disparity, *i.e.*, $\text{Acc}(g_{\text{maj}}(y)) - \text{Acc}(g_{\text{min}}(y))$. We see that in most cases these classes correspond, suggesting an *explanatory power* of the spectral norm ratio. In particular, this correspondence is consistent throughout all trials of CelebA and CivilComments, the most class-imbalanced datasets we study.

Seed	Waterbirds	CelebA	CivilComments	MultiNLI
1	(1, 1)	(1, 1)	(0, 0)	(0, 0)
2	(1, 1)	(1, 1)	(0, 0)	(0, 1)
3	(0, 1)	(1, 1)	(0, 0)	(2, 0)

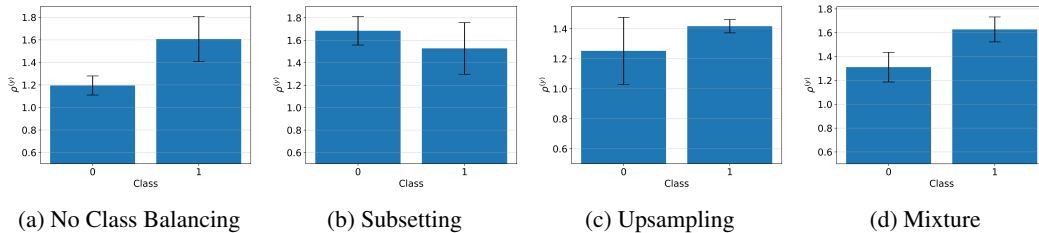


Figure 18: **Spectral imbalance is consistent across balancing methods.** We plot the mean and standard deviation, across 3 experimental trials, of the intra-class spectral norm ratio $\rho^{(y)}$, or the ratio of the top eigenvalues of the minority and majority group covariance matrices, for each class $y \in \mathcal{Y}$. We compute this metric using a finetuned ConvNeXt-V2 Nano on Waterbirds. Overall, we found that the relative magnitudes of $\rho^{(y)}$ are consistent across class-balancing methods. We note that the most drastic change in the relative magnitudes of $\rho^{(y)}$ is induced by the subsetting method, which has the worst WGA by far for the Waterbirds dataset. These results suggest that optimal class-balancing may bring about additional stability in the representation.

E Broader impacts, limitations, and compute

Broader impacts. We hope our work contributes to the safe and equitable application of machine learning and motivates further research in ML fairness. With that said, a potential negative outcome may arise if practitioners simply apply our techniques in place of conducting rigorous bias studies. Indeed, while our methods show improved fairness with respect to the worst-group accuracy metric, it is necessary to perform comprehensive evaluations with respect to multiple additional fairness criteria prior to model deployment.

Limitations. Our methods take advantage of the structure of spurious correlations; our insights would likely not transfer over to datasets which exhibit a more extreme *complete correlation* (i.e., contain zero minority group data) [43, 30] or to more generic out-of-distribution generalization settings. A limitation of our mixture balancing method is that to achieve optimal performance, it requires a validation set with group annotations for selection of the best class-imbalance ratio [50, 31, 23, 26]. With that said, we show in Table 1 that worst-class accuracy [69] and the bias-unsupervised validation score of [60] are sufficient for model selection in the benchmarks we study.

Compute. Our experiments were conducted on two Google Cloud Platform (GCP) 16GB Nvidia Tesla P100 GPUs and two local 24GB Nvidia RTX A5000 GPUs. The spectral imbalance experiments in Section 5 were conducted on a GCP system with a 16-core CPU and 128GB of RAM. We believe our work could be reproduced for under \$5000 in GCP compute credits, with a majority of that compute going towards running experiments over multiple random seeds.

NeurIPS Paper Checklist

1. Claims

Question: Do the main claims made in the abstract and introduction accurately reflect the paper's contributions and scope?

Answer: [Yes]

Justification: Claims are stated clearly and supported by empirical evidence. Several rigorous benchmarks are considered across vision and language tasks using state-of-the-art models.

Guidelines:

- The answer NA means that the abstract and introduction do not include the claims made in the paper.
- The abstract and/or introduction should clearly state the claims made, including the contributions made in the paper and important assumptions and limitations. A No or NA answer to this question will not be perceived well by the reviewers.
- The claims made should match theoretical and experimental results, and reflect how much the results can be expected to generalize to other settings.
- It is fine to include aspirational goals as motivation as long as it is clear that these goals are not attained by the paper.

2. Limitations

Question: Does the paper discuss the limitations of the work performed by the authors?

Answer: [Yes]

Justification: We provide a discussion of limitations in Appendix E.

Guidelines:

- The answer NA means that the paper has no limitation while the answer No means that the paper has limitations, but those are not discussed in the paper.
- The authors are encouraged to create a separate "Limitations" section in their paper.
- The paper should point out any strong assumptions and how robust the results are to violations of these assumptions (e.g., independence assumptions, noiseless settings, model well-specification, asymptotic approximations only holding locally). The authors should reflect on how these assumptions might be violated in practice and what the implications would be.
- The authors should reflect on the scope of the claims made, e.g., if the approach was only tested on a few datasets or with a few runs. In general, empirical results often depend on implicit assumptions, which should be articulated.
- The authors should reflect on the factors that influence the performance of the approach. For example, a facial recognition algorithm may perform poorly when image resolution is low or images are taken in low lighting. Or a speech-to-text system might not be used reliably to provide closed captions for online lectures because it fails to handle technical jargon.
- The authors should discuss the computational efficiency of the proposed algorithms and how they scale with dataset size.
- If applicable, the authors should discuss possible limitations of their approach to address problems of privacy and fairness.
- While the authors might fear that complete honesty about limitations might be used by reviewers as grounds for rejection, a worse outcome might be that reviewers discover limitations that aren't acknowledged in the paper. The authors should use their best judgment and recognize that individual actions in favor of transparency play an important role in developing norms that preserve the integrity of the community. Reviewers will be specifically instructed to not penalize honesty concerning limitations.

3. Theory Assumptions and Proofs

Question: For each theoretical result, does the paper provide the full set of assumptions and a complete (and correct) proof?

Answer: [NA]

Justification: No theoretical results are included.

Guidelines:

- The answer NA means that the paper does not include theoretical results.
- All the theorems, formulas, and proofs in the paper should be numbered and cross-referenced.
- All assumptions should be clearly stated or referenced in the statement of any theorems.
- The proofs can either appear in the main paper or the supplemental material, but if they appear in the supplemental material, the authors are encouraged to provide a short proof sketch to provide intuition.
- Inversely, any informal proof provided in the core of the paper should be complemented by formal proofs provided in appendix or supplemental material.
- Theorems and Lemmas that the proof relies upon should be properly referenced.

4. Experimental Result Reproducibility

Question: Does the paper fully disclose all the information needed to reproduce the main experimental results of the paper to the extent that it affects the main claims and/or conclusions of the paper (regardless of whether the code and data are provided or not)?

Answer: [Yes]

Justification: Our experiments are performed with fixed seeds for reproducibility and we have released the code.

Guidelines:

- The answer NA means that the paper does not include experiments.
- If the paper includes experiments, a No answer to this question will not be perceived well by the reviewers: Making the paper reproducible is important, regardless of whether the code and data are provided or not.
- If the contribution is a dataset and/or model, the authors should describe the steps taken to make their results reproducible or verifiable.
- Depending on the contribution, reproducibility can be accomplished in various ways. For example, if the contribution is a novel architecture, describing the architecture fully might suffice, or if the contribution is a specific model and empirical evaluation, it may be necessary to either make it possible for others to replicate the model with the same dataset, or provide access to the model. In general, releasing code and data is often one good way to accomplish this, but reproducibility can also be provided via detailed instructions for how to replicate the results, access to a hosted model (e.g., in the case of a large language model), releasing of a model checkpoint, or other means that are appropriate to the research performed.
- While NeurIPS does not require releasing code, the conference does require all submissions to provide some reasonable avenue for reproducibility, which may depend on the nature of the contribution. For example
 - (a) If the contribution is primarily a new algorithm, the paper should make it clear how to reproduce that algorithm.
 - (b) If the contribution is primarily a new model architecture, the paper should describe the architecture clearly and fully.
 - (c) If the contribution is a new model (e.g., a large language model), then there should either be a way to access this model for reproducing the results or a way to reproduce the model (e.g., with an open-source dataset or instructions for how to construct the dataset).
 - (d) We recognize that reproducibility may be tricky in some cases, in which case authors are welcome to describe the particular way they provide for reproducibility. In the case of closed-source models, it may be that access to the model is limited in some way (e.g., to registered users), but it should be possible for other researchers to have some path to reproducing or verifying the results.

5. Open access to data and code

Question: Does the paper provide open access to the data and code, with sufficient instructions to faithfully reproduce the main experimental results, as described in supplemental material?

Answer: [Yes]

Justification: Our experiments are performed with fixed seeds for reproducibility and we have released the code. Our datasets are open benchmarks provided by the community.

Guidelines:

- The answer NA means that paper does not include experiments requiring code.
- Please see the NeurIPS code and data submission guidelines (<https://nips.cc/public/guides/CodeSubmissionPolicy>) for more details.
- While we encourage the release of code and data, we understand that this might not be possible, so “No” is an acceptable answer. Papers cannot be rejected simply for not including code, unless this is central to the contribution (e.g., for a new open-source benchmark).
- The instructions should contain the exact command and environment needed to run to reproduce the results. See the NeurIPS code and data submission guidelines (<https://nips.cc/public/guides/CodeSubmissionPolicy>) for more details.
- The authors should provide instructions on data access and preparation, including how to access the raw data, preprocessed data, intermediate data, and generated data, etc.
- The authors should provide scripts to reproduce all experimental results for the new proposed method and baselines. If only a subset of experiments are reproducible, they should state which ones are omitted from the script and why.
- At submission time, to preserve anonymity, the authors should release anonymized versions (if applicable).
- Providing as much information as possible in supplemental material (appended to the paper) is recommended, but including URLs to data and code is permitted.

6. Experimental Setting/Details

Question: Does the paper specify all the training and test details (e.g., data splits, hyper-parameters, how they were chosen, type of optimizer, etc.) necessary to understand the results?

Answer: [Yes]

Justification: We describe the main experimental setting in Section 2 and additional model configuration information is located in Appendix A.2.

Guidelines:

- The answer NA means that the paper does not include experiments.
- The experimental setting should be presented in the core of the paper to a level of detail that is necessary to appreciate the results and make sense of them.
- The full details can be provided either with the code, in appendix, or as supplemental material.

7. Experiment Statistical Significance

Question: Does the paper report error bars suitably and correctly defined or other appropriate information about the statistical significance of the experiments?

Answer: [Yes]

Justification: We provide error bars representing one standard deviation over three independent seeds. We state factors of variability captured by the error bars in Section 2.

Guidelines:

- The answer NA means that the paper does not include experiments.
- The authors should answer "Yes" if the results are accompanied by error bars, confidence intervals, or statistical significance tests, at least for the experiments that support the main claims of the paper.
- The factors of variability that the error bars are capturing should be clearly stated (for example, train/test split, initialization, random drawing of some parameter, or overall run with given experimental conditions).
- The method for calculating the error bars should be explained (closed form formula, call to a library function, bootstrap, etc.)

- The assumptions made should be given (e.g., Normally distributed errors).
- It should be clear whether the error bar is the standard deviation or the standard error of the mean.
- It is OK to report 1-sigma error bars, but one should state it. The authors should preferably report a 2-sigma error bar than state that they have a 96% CI, if the hypothesis of Normality of errors is not verified.
- For asymmetric distributions, the authors should be careful not to show in tables or figures symmetric error bars that would yield results that are out of range (e.g. negative error rates).
- If error bars are reported in tables or plots, The authors should explain in the text how they were calculated and reference the corresponding figures or tables in the text.

8. Experiments Compute Resources

Question: For each experiment, does the paper provide sufficient information on the computer resources (type of compute workers, memory, time of execution) needed to reproduce the experiments?

Answer: [Yes]

Justification: We provide a compute statement in Appendix E.

Guidelines:

- The answer NA means that the paper does not include experiments.
- The paper should indicate the type of compute workers CPU or GPU, internal cluster, or cloud provider, including relevant memory and storage.
- The paper should provide the amount of compute required for each of the individual experimental runs as well as estimate the total compute.
- The paper should disclose whether the full research project required more compute than the experiments reported in the paper (e.g., preliminary or failed experiments that didn't make it into the paper).

9. Code Of Ethics

Question: Does the research conducted in the paper conform, in every respect, with the NeurIPS Code of Ethics <https://neurips.cc/public/EthicsGuidelines?>

Answer: [Yes]

Justification: We have reviewed the code of ethics and confirm that our work follows them in every respect.

Guidelines:

- The answer NA means that the authors have not reviewed the NeurIPS Code of Ethics.
- If the authors answer No, they should explain the special circumstances that require a deviation from the Code of Ethics.
- The authors should make sure to preserve anonymity (e.g., if there is a special consideration due to laws or regulations in their jurisdiction).

10. Broader Impacts

Question: Does the paper discuss both potential positive societal impacts and negative societal impacts of the work performed?

Answer: [Yes]

Justification: We provide a discussion of broader impacts in Appendix E.

Guidelines: The experiments in the paper are aimed at understanding modern machine learning algorithms and promoting their fair and equitable use. We have included a discussion of social impacts in Appendix E.

- The answer NA means that there is no societal impact of the work performed.
- If the authors answer NA or No, they should explain why their work has no societal impact or why the paper does not address societal impact.

- Examples of negative societal impacts include potential malicious or unintended uses (e.g., disinformation, generating fake profiles, surveillance), fairness considerations (e.g., deployment of technologies that could make decisions that unfairly impact specific groups), privacy considerations, and security considerations.
- The conference expects that many papers will be foundational research and not tied to particular applications, let alone deployments. However, if there is a direct path to any negative applications, the authors should point it out. For example, it is legitimate to point out that an improvement in the quality of generative models could be used to generate deepfakes for disinformation. On the other hand, it is not needed to point out that a generic algorithm for optimizing neural networks could enable people to train models that generate Deepfakes faster.
- The authors should consider possible harms that could arise when the technology is being used as intended and functioning correctly, harms that could arise when the technology is being used as intended but gives incorrect results, and harms following from (intentional or unintentional) misuse of the technology.
- If there are negative societal impacts, the authors could also discuss possible mitigation strategies (e.g., gated release of models, providing defenses in addition to attacks, mechanisms for monitoring misuse, mechanisms to monitor how a system learns from feedback over time, improving the efficiency and accessibility of ML).

11. Safeguards

Question: Does the paper describe safeguards that have been put in place for responsible release of data or models that have a high risk for misuse (e.g., pretrained language models, image generators, or scraped datasets)?

Answer: [Yes]

Justification: The experiments in the paper are aimed at understanding modern machine learning algorithms and promoting their fair and equitable use. We believe the methodologies described in the paper do not have high risk for misuse, but nevertheless have included a discussion of social impacts in Appendix E.

Guidelines:

- The answer NA means that the paper poses no such risks.
- Released models that have a high risk for misuse or dual-use should be released with necessary safeguards to allow for controlled use of the model, for example by requiring that users adhere to usage guidelines or restrictions to access the model or implementing safety filters.
- Datasets that have been scraped from the Internet could pose safety risks. The authors should describe how they avoided releasing unsafe images.
- We recognize that providing effective safeguards is challenging, and many papers do not require this, but we encourage authors to take this into account and make a best faith effort.

12. Licenses for existing assets

Question: Are the creators or original owners of assets (e.g., code, data, models), used in the paper, properly credited and are the license and terms of use explicitly mentioned and properly respected?

Answer: [Yes]

Justification: We credit creators of datasets and models used in the paper via citation and additionally in Appendix A.2.

Guidelines:

- The answer NA means that the paper does not use existing assets.
- The authors should cite the original paper that produced the code package or dataset.
- The authors should state which version of the asset is used and, if possible, include a URL.
- The name of the license (e.g., CC-BY 4.0) should be included for each asset.
- For scraped data from a particular source (e.g., website), the copyright and terms of service of that source should be provided.

- If assets are released, the license, copyright information, and terms of use in the package should be provided. For popular datasets, paperswithcode.com/datasets has curated licenses for some datasets. Their licensing guide can help determine the license of a dataset.
- For existing datasets that are re-packaged, both the original license and the license of the derived asset (if it has changed) should be provided.
- If this information is not available online, the authors are encouraged to reach out to the asset's creators.

13. New Assets

Question: Are new assets introduced in the paper well documented and is the documentation provided alongside the assets?

Answer: [Yes]

Justification: We have released the code and license information with additional documentation located in the code.

Guidelines:

- The answer NA means that the paper does not release new assets.
- Researchers should communicate the details of the dataset/code/model as part of their submissions via structured templates. This includes details about training, license, limitations, etc.
- The paper should discuss whether and how consent was obtained from people whose asset is used.
- At submission time, remember to anonymize your assets (if applicable). You can either create an anonymized URL or include an anonymized zip file.

14. Crowdsourcing and Research with Human Subjects

Question: For crowdsourcing experiments and research with human subjects, does the paper include the full text of instructions given to participants and screenshots, if applicable, as well as details about compensation (if any)?

Answer: [NA]

Justification: We do not perform experiments with human subjects.

Guidelines:

- The answer NA means that the paper does not involve crowdsourcing nor research with human subjects.
- Including this information in the supplemental material is fine, but if the main contribution of the paper involves human subjects, then as much detail as possible should be included in the main paper.
- According to the NeurIPS Code of Ethics, workers involved in data collection, curation, or other labor should be paid at least the minimum wage in the country of the data collector.

15. Institutional Review Board (IRB) Approvals or Equivalent for Research with Human Subjects

Question: Does the paper describe potential risks incurred by study participants, whether such risks were disclosed to the subjects, and whether Institutional Review Board (IRB) approvals (or an equivalent approval/review based on the requirements of your country or institution) were obtained?

Answer: [NA]

Justification: We do not perform experiments with human subjects.

Guidelines:

- The answer NA means that the paper does not involve crowdsourcing nor research with human subjects.
- Depending on the country in which research is conducted, IRB approval (or equivalent) may be required for any human subjects research. If you obtained IRB approval, you should clearly state this in the paper.

- We recognize that the procedures for this may vary significantly between institutions and locations, and we expect authors to adhere to the NeurIPS Code of Ethics and the guidelines for their institution.
- For initial submissions, do not include any information that would break anonymity (if applicable), such as the institution conducting the review.