
Can Learned Optimization Make Reinforcement Learning Less Difficult?

Alexander D. Goldie^{*12} Chris Lu¹ Matthew T. Jackson¹²
Shimon Whiteson^{†2} Jakob N. Foerster^{†1}
¹FLAIR, University of Oxford ²WhiRL, University of Oxford

Abstract

While reinforcement learning (RL) holds great potential for decision making in the real world, it suffers from a number of unique difficulties which often need specific consideration. In particular: it is highly non-stationary; suffers from high degrees of plasticity loss; and requires exploration to prevent premature convergence to local optima and maximize return. In this paper, we consider whether learned optimization can help overcome these problems. Our method, Learned Optimization for Plasticity, Exploration and Non-stationarity (OPEN¹), meta-learns an update rule whose input features and output structure are informed by previously proposed solutions to these difficulties. We show that our parameterization is flexible enough to enable meta-learning in diverse learning contexts, including the ability to use stochasticity for exploration. Our experiments demonstrate that when meta-trained on single and small sets of environments, OPEN outperforms or equals traditionally used optimizers. Furthermore, OPEN shows strong generalization characteristics across a range of environments and agent architectures.

1 Introduction

Reinforcement learning [1, RL] has undergone significant advances in recent years, scaling from solving complex games [2, 3] towards approaching real world applications [4–7]. However, RL is limited by a number of difficulties which are not present in other machine learning domains, requiring the development of numerous hand-crafted workarounds to maximize its performance.

Here, we take inspiration from three *difficulties* of RL: non-stationarity due to continuously changing input and output distributions [8]; high degrees of plasticity loss limiting model capacities [9, 10]; and exploration, which is needed to ensure an agent does not converge to local optima prematurely [1, 11]. Overcoming these challenges could enable drastic improvements in the performance of RL, potentially reducing the barriers to applications of RL in the real-world. Thus far, approaches to tackle these problems have relied on human intuition to find *hand-crafted* solutions. However, this is fundamentally limited by human understanding. *Meta-RL* [12] offers an alternative in which RL algorithms themselves are learned from data rather than designed by hand. Meta-learned RL algorithms have previously demonstrated improved performance over hand-crafted ones [13–15].

On a related note, *learned optimization* has proven successful in supervised and unsupervised learning (e.g., VeLO [16]). Learned optimizers are generally parameterized update rules trained to outperform handcrafted algorithms like gradient descent. However, current learned optimizers perform poorly in RL [16, 17]. While some may argue that RL is simply an out-of-distribution task [16], the lack of

*Correspondence to goldie@robots.ox.ac.uk.

†Equal supervision.

¹Open-source code is available here.

consideration for, and inability to *target*, specific difficulties of RL in naïve learned optimizers leads us to believe that they would still underperform even if RL were in the training distribution.

We propose an algorithm, shown in Figure 1, for meta-learning optimizers specifically for RL called Learned Optimization for Plasticity, Exploration and Nonstationarity (OPEN). OPEN meta-learns update rules whose inputs are rooted in previously proposed solutions to the difficulties above, and whose outputs use *learnable stochasticity* to boost exploration. OPEN is trained to maximize final return *only*, meaning it does not use regularization to mitigate the difficulties it is designed around.

In our results (Section 6), we benchmark OPEN against handcrafted optimizers (Adam [18], RMSProp [19]), open-source discovered/learned optimizers (Lion [20], VeLO [16]) and baseline learned optimizers trained for RL (Optim4RL [17], ‘No Features’). We show that OPEN can fit to single and small sets of environments and also generalize in- and out-of-support of its training distribution. We further find that OPEN generalizes better than Adam [18] to gridworlds and Craftax-Classic [21]. Therefore, our novel approach of *increasing* optimizer flexibility via extra inputs and an exploration-driven output, rather than enforcing more structured updates, enables significant performance gains.

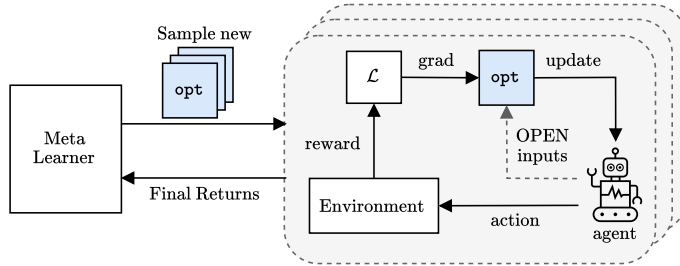


Figure 1: A visualization of OPEN. We train N agents, replacing the handcrafted optimizer of the RL loop with ones sampled from the meta-learner (i.e., evolution). Each optimizer conditions on gradient, momentum and additional inputs, detailed in Section 5.3, to calculate updates. The final returns from each loop are output to the meta learner, which improves the optimizer before repeating the process. A single inner loop step is described algorithmically in Appendix B.1.

2 Background

Reinforcement Learning The RL problem is formulated as a *Markov Decision Process* [1, MDP] described by the tuple $\langle \mathcal{A}, \mathcal{S}, P, R, \rho, \gamma \rangle$. At discrete timestep t , the agent takes action $a_t \in \mathcal{A}$ sampled from its (possibly stochastic) policy, $\pi(\cdot|s_t) \in \Pi$, which conditions on the current state $s_t \in \mathcal{S}$ (where $s_0 \sim \rho$). After each action, the agent receives reward $R(s_t, a_t)$ and the state transitions to s_{t+1} , based on the transition dynamics $P(s_{t+1}|s_t, a_t)$. An agent’s objective is to maximize its *discounted expected return*, J^π , corresponding to a discount factor $\gamma \in [0, 1)$, which prevents the agent making *myopic* decisions. This is defined as

$$J^\pi := \mathbb{E}_{a_{0:\infty} \sim \pi, s_0 \sim \rho, s_{1:\infty} \sim P} \left[\sum_{t=0}^{\infty} \gamma^t R_t \right]. \quad (1)$$

Proximal policy optimization [22, PPO] is an algorithm designed to maximize J^π . It uses advantage, $A^\pi(s, a)$, which is calculated from the *state value function*, $V^\pi = \mathbb{E}_\pi[\sum_{t=0}^{\infty} \gamma^t R_t | S_t = s]$, and *state-action value function*, $Q^\pi(s, a) = \mathbb{E}_\pi[\sum_{t=0}^{\infty} \gamma^t R_t | S_t = s, A_t = a]$. It measures the improvement of a specific action over the current policy and takes the form

$$A^\pi(s, a) = Q^\pi(s, a) - V^\pi(s). \quad (2)$$

PPO introduces a loss for optimizing the policy, parameterized by θ , that prevents extreme policy updates in gradient *ascent*. This uses *clipping*, which ensures there is no benefit to updating θ beyond where the policy *probability ratio*, $r_t(\theta) = \frac{\pi_\theta(a_t|s_t)}{\pi_{\theta_{old}}(a_t|s_t)}$, exceeds the range $[1 \pm \epsilon]$. The clipped loss is

$$L^{CLIP}(\theta) = \mathbb{E}[\min(r_t(\theta)A^\pi(s_t, a_t), \text{clip}(r_t(\theta), 1 \pm \epsilon)A^\pi(s_t, a_t))]. \quad (3)$$

PPO is an actor-critic [1] method, where the policy and value functions are modeled with different neural networks, or separate heads of the same neural network, conditioning on state. The PPO objective to maximize combines the clipped loss, a value function error, and an entropy bonus into

$$L_t(\theta) = \mathbb{E}[L_t^{CLIP}(\theta) - c_1 L_t^{VF}(\theta) + c_2 S[\pi_\theta](s_t)]. \quad (4)$$

Meta-Learning Optimizers in RL Algorithms like Adam [18] or RMSprop [19] are designed to maximize an objective by updating the parameters of a neural network in the direction of *positive gradient* with respect to the function. They are often applied with augmentations such as *momentum* or *learning rate schedules* to better converge to optima. Learned optimizers offer an alternative: parameterized *update rules*, conditioning on more than just gradient, which are trained to maximize an objective [23, 16, 24]. For any parameterized optimizer opt_ϕ , which conditions on a set of inputs \mathbf{x} , the update rule to produce update u can be described as a function, $\text{opt}_\phi(\mathbf{x}) \rightarrow u$.

We treat learning to optimize as a meta-RL problem [12]. In meta-RL, the goal is to maximize J^π over a *distribution* of MDPs $P(\mathcal{M})$. For our task, an optimizer trained to maximize $\mathcal{J}(\phi) = \mathbb{E}_{\mathcal{M}} [J^\pi | \text{opt}_\phi]$ yields the optimal meta-parameterization opt_{ϕ^*} .

Evolution Strategies Evolution algorithms (EA) are a *backpropagation-free*, black-box method for optimization [25] which uses a population of *perturbed* parameters sampled from a distribution (here, $\theta \sim \mathcal{N}(\theta, \sigma^2 I)$). This population is used to maximize a *fitness* $F(\cdot)$. EA encompasses a range of techniques (e.g., evolution strategies (ES) [26, 27], genetic algorithms [28] or CMA-ES [29]).

Natural evolution strategies (NES) [30] are a class of ES methods that use the population fitness to estimate a natural gradient for the mean parameters, θ . This can then be optimized with typical gradient ascent algorithms like Adam [18]. Salimans et al. [26] introduce *OpenAI ES* for optimizing θ using the estimator

$$\nabla_\theta \mathbb{E}_{\epsilon \sim \mathcal{N}(0, I)} F(\theta + \sigma \epsilon) = \frac{1}{\sigma} \mathbb{E}_{\epsilon \sim \mathcal{N}(0, I)} \{F(\theta + \sigma \epsilon) \epsilon\}, \quad (5)$$

which is approximated using a population average. In practice, we use antithetic sampling (i.e., for each sampled ϵ , evaluating $+\epsilon$ and $-\epsilon$) [31]. Antithetic *task* sampling enables learning on a task *distribution*, by evaluating and ranking each antithetic pair on *different* tasks [32].

Historically, RL was too slow for ES to be practical for meta-training. However, PureJaxRL [15] recently demonstrated the feasibility of ES for meta-RL, owing to the speedup enabled by vectorization in Jax [33]. We use the implementation of *OpenAI ES* [26] from evosax [34].

3 Related Work

3.1 Optimization in RL

Wilson et al. [35] and Reddi et al. [36] show that adaptive optimizers struggle in highly stochastic processes. Henderson et al. [37] indicate that, unlike other learning regimes, RL is sufficiently stochastic for these findings to apply, which suggests RL-specific optimizers could be beneficial.

The idea that optimizers designed for supervised learning may not perfectly transfer to RL is reflected by Bengio et al. [38], who propose an amended momentum suitable for temporal difference learning [39]. This is related to work by Sarigiil and Avcı [40], who explore the impact of different types of momentum on RL. While these works motivate designing optimization techniques *specifically* for RL, we take a more expressive approach by replacing the whole optimizer instead of just its momentum calculation, and using meta-learning to fit our optimizer to data rather than relying on potentially suboptimal human intuition.

3.2 Meta-learning

Discovering RL Algorithms Rather than using handcrafted algorithms, a recent objective in meta-RL is *discovering* RL algorithms from data. While there are many successes in this area (e.g., Learned Policy Gradient [13, LPG], MetaGenRL [14], Active Adaptive Perception [41] and Learned Policy Optimisation [15, LPO]), we focus on meta-learning a replacement to the *optimizer* due to the outsized impact a learned update rule can have on learning. We also use *specific* difficulties of RL to guide the *design* of our method, rather than simply applying end-to-end learning.

Jackson et al. [32] learn temporally-aware versions of LPO and LPG. While their approach offers inspiration for dealing with non-stationarity in RL, they also rely on Adam [18], an optimizer designed for stationarity that is suboptimal for RL [9]. Instead, we propose replacing the *optimizer* itself with an expressive and dynamic update rule that is not subject to these problems.

Learned Optimization Learning to optimize [23, 42, 43, L2O] strives to learn replacements to handcrafted gradient-based optimizers like Adam [18], generally using neural networks (e.g., [24, 44–46]). While they show strong performance in supervised and unsupervised learning [16, 47], previous learned optimizers do not consider the innate difficulties of RL, limiting transferability. Furthermore, while VeLO used 4000 TPU-months of compute [16], OPEN requires on the order of one GPU-month.

Lion [20] is a symbolic optimizer discovered by evolution that outperforms AdamW [48] using a similar update expression. While the simplistic, symbolic form of Lion lets it generalize to RL better than most learned optimizers, it cannot condition on features additional to gradient and parameter value. This limits its expressibility, ability to target the difficulties of RL and, therefore, performance.

Learned Optimization in RL Learned optimization in RL is significantly more difficult than in other learning domains due to the problems outlined in section 4. For this reason, SOTA learned optimizers fail in transfer to RL [16]. Optim4RL [17] attempts to solve this issue by learning to optimize directly in RL. However, in their tests and ours, Optim4RL fails to consistently beat handcrafted benchmarks. Also, it relies on a heavily constrained update expression based on Adam [18], and it needs expensive learning rate tuning. Instead, we achieve much stronger results with a completely *black-box* setup inspired by preexisting methods for mitigating specific difficulties in RL.

4 Difficulties in RL

We believe that fundamental differences exist between RL and other learning paradigms which make RL particularly difficult. Here, we briefly cover a specific set of prominent difficulties in RL, which are detailed with additional references in appendix A. Our method takes inspiration from handcrafted heuristics targeting these challenges (Section 5.3). We show via thorough ablation (Section 7) that explicitly formulating our method around these difficulties leads to significant performance gains.

(Problem 1) Non-stationarity RL is subject to non-stationarity over the training process [1] as the updating agent causes changes to the training distribution. We denote this *training non-stationarity*. Lyle et al. [9] suggest optimizers designed for stationary settings struggle under nonstationarity.

(Problem 2) Plasticity loss Plasticity loss, or the inability to fit new objectives during training, has been a theme in recent deep RL literature [9, 49, 50, 10]. Here, we focus on dormancy [49], a measurement tracking inactive neurons used as a metric for plasticity loss [10, 51–53]. It is defined as

$$s_i^l = \frac{\mathbb{E}_{x \in D} |h_i^l(x)|}{\frac{1}{H^l} \sum_{k \in h} \mathbb{E}_{x \in D} |h_k^l(x)|}, \quad (6)$$

where $h_i^l(x)$ is the activation of neuron i in layer l with input $x \in D$ for distribution D . H^l is the total number of neurons in layer l . The denominator normalizes average dormancy to 1 in each layer.

A neuron is τ -dormant if $s_i^l \leq \tau$, meaning the neuron’s output makes up less than τ of its layer’s output. For ReLU activation functions, $\tau = 0$ means a neuron is in the saturated part of the ReLU. Sokar et al. [49] find that dormant neurons generally *stay* dormant throughout training, motivating approaches which try to reactivate dormant neurons to boost plasticity.

(Problem 3) Exploration *Exploration* is a key problem in RL [1]. To prevent premature convergence to local optima, and thus maximize final return, an agent must explore uncertain states and actions. Here, we focus on parameter space noise for exploration [11], where noise is applied to the parameters of the agent rather than to its output actions, like ϵ -greedy [1].

5 Method

There are three key considerations when doing learned optimization for RL: what architecture to use; how to train the optimizer; and what inputs the optimizer should condition on. In this section, we systematically consider each of these questions to construct OPEN, with justification for each of our decisions grounded in our core difficulties of RL.

5.1 Architecture and Parameterization

To enable conditioning on history, which is required to express behavior like momentum, for example, OPEN uses a gated recurrent unit [54, GRU]. This is followed by two fully connected layers with

LayerNorm [55], which we include for stability. All layers are small; this is important for limiting memory usage, since the GRU stores separate states for *every* agent parameter, and for maintaining computational efficiency [45]. We visualize and detail the architecture of OPEN in Appendix B.

Update Expression We split the calculation of the update in OPEN into three stages, each of which serves a different purpose. The first stage, which follows Metz et al. [24], is

$$\hat{u}_i = \alpha_1 m_i \exp \alpha_2 e_i, \quad (7)$$

where m_i and e_i are optimizer outputs for parameter i , and $\alpha_{(1,2)}$ are small scaling factors used for stability. This update can cover many orders of magnitude without requiring large network outputs.

(P3) Secondly, we augment the update rule for the *actor* only to increase exploration; there is no need for the critic to explore. We take inspiration from parameter space noise for exploration [11], since it can easily be applied via the optimizer. To be precise, we augment the actor’s update as

$$\hat{u}_i^{\text{actor, new}} := \hat{u}_i^{\text{actor}} + \alpha_3 \delta_i^{\text{actor}} \epsilon. \quad (8)$$

Here, α_3 is a small, stabilizing scaling factor, δ_i^{actor} is a third output from the optimizer, and $\epsilon \sim \mathcal{N}(0, 1)$ is sampled Gaussian noise. By multiplying δ_i^{actor} and ϵ , we introduce a random walk of learned, per-parameter variance to the update which can be used for exploration. Since δ_i^{actor} depends on the optimizer’s inputs, this can potentially learn complex interactions between the noise schedule and the features outlined in Section 5.3. Unlike Plappert et al. [11], who remove and resample noise between rollouts, OPEN adds permanent noise to the parameters. This benefits plasticity loss (i.e., **(P2)**), in principle enabling the optimizer to reactivate dormant neurons in the absence of gradient.

Unfortunately, naïve application of the above updates can cause errors as, even without stochasticity, agent parameters can grow to a point of numerical instability. This causes difficulty in domains with *continuous* action spaces, where action selection can involve exponentiation to get a non-negative standard deviation. Therefore, the *final* update stage stabilizes meta-optimization by zero-meaning, as

$$\mathbf{u} = \hat{\mathbf{u}} - \mathbb{E}[\hat{\mathbf{u}}]. \quad (9)$$

While this limits the update’s expressiveness, we find that even traditional optimizers tend to produce nearly zero-mean updates. In practice, this enables learning in environments with continuous actions without harming performance for discrete actions. Parameter i is updated as $p_i^{(t+1)} = p_i^{(t)} - u_i$.

5.2 Training

We train our optimizers with *OpenAI ES* [26], using *final return* as the fitness. We apply the commonly-used rank transform, which involves mapping rankings over the population to the range $[-0.5, 0.5]$, to the fitnesses before estimating the ES gradient; this is a form of fitness shaping [30, 26], and makes learning both easier and invariant to reward scale.

For training on multiple environments simultaneously (i.e., multi-task training, Section 6), we evaluate *every* member of the population on *all* environments. After evaluation, we: 1) Divide by the return Adam achieves in each environment; 2) Average the scores over environments; 3) Do a rank transform. Normalizing by Adam maps returns to a roughly common scale, enabling comparison between diverse environments. However, this biases learning to environments where Adam underperforms OPEN. We believe finding better curricula for multi-task training would be highly impactful future work.

5.3 Inputs

Carefully selecting which inputs to condition OPEN on is crucial; they should be sufficiently expressive without significantly increasing the computational cost or meta-learning sample requirements of the optimizer, and should allow the trained optimizers to surgically target specific problems in RL. To satisfy these requirements, we take inspiration from prior work addressing our focal difficulties of RL. In spirit, we distill current methods to a ‘lowest common denominator’ which is cheap to calculate. We provide additional details of how these features are calculated in Appendix B.2.

(P1) Two training timescales Many learned optimizers for stationary problems incorporate some version of progress through training as an input [16, 45, 46]. Since PPO learns from successively collected, stationary batches of data [56], we condition OPEN on how far it is through updating with

the current batch (i.e., *batch proportion*). This enables behavior like learning rate scheduling, which has proved effective in stationary problems (e.g., [57, 58]), and bias correction from Adam to account for inaccurate momentum estimates [18].

Inspired by Jackson et al. [32], who demonstrate the efficacy of learning dynamic versions of LPG [13] and LPO [15], we also condition OPEN on how far the current batch is through the total number of batches to be collected (i.e., *training proportion*). This directly targets *training non-stationarity*.

(P2) Layer Proportion Nikishin et al. [59, 60] operate on higher (i.e., closer to the output) network layers in their attempts to address plasticity loss in RL. Furthermore, they treat intervention depth as a hyperparameter. To replicate this, and enable varied behavior between the different layers of an agent’s network, we condition OPEN on the relative position of the parameter’s layer in the network.

(P2) Dormancy As Sokar et al. [49] *reinitialize* τ -dormant neurons, we condition OPEN *directly* on dormancy; this enables similar behavior by allowing OPEN to react as neurons become more dormant. In fact, in tandem with learnable stochasticity, this enables OPEN to reinitialize dormant neurons, just like Sokar et al. [49]. Since dormancy is calculated for *neurons*, rather than *parameters*, we use the value of dormancy for the neuron *downstream* of each parameter.

6 Results

In this section, we benchmark OPEN against a plethora of baselines on large-scale training domains.

6.1 Experimental Setup

Due to computational constraints, we meta-train an optimizer on a single random seed without ES hyperparameter tuning. This follows standard evaluation protocols in learned optimization (e.g., [16, 17, 47]), which are also constrained by the high computational cost of meta-learned optimization. We provide the cost of experiments in Appendix J, including a comparison of runtimes with other optimizers. We detail hyperparameters in Appendix C.5. We define four evaluation domains, based on Kirk et al. [61], in which an effective learned optimization framework *should* prove competent:

Single-Task Training A learned optimizer must be capable of fitting to a single environment, and being evaluated in the *same* environment, to demonstrate it is expressive enough to learn *an* update rule. We test this in five environments: Breakout, Asterix, Space Invaders and Freeway from MinAtar [62, 63]; and Ant from Brax [64, 65]. This is referred to as ‘singleton’ training in Kirk et al. [61].

Multi-Task Training To show an optimizer is able to perform under a wide input distribution, it must be able to learn in a number of environments *simultaneously*. Therefore, we evaluate performance from training in all four environments from MinAtar [62, 63]². We evaluate the average normalized score across environments with respect to Adam.

In-Distribution Task Generalization An optimizer should generalize to unseen tasks within its training distribution. To this end, we train OPEN on a *distribution* of gridworlds from Jackson et al. [66] with antithetic task sampling [32], and evaluate performance by sampling tasks from the *same distribution*. We include details in Appendix D.

Out-Of-Support Task Generalization Crucially, an optimizer unable to generalize to new settings has limited real-world usefulness. Therefore, we explore *out-of-support* (OOS) generalization by testing OPEN on specific gridworld distributions defined by Oh et al. [13], and a set of mazes from minigrad [67] which are not in the training distribution, with unseen agent parameters. Furthermore, we test how OPEN performs *0-shot* in Craftax-Classic [21], a Jax reimplementation of Crafter [68].

Baselines We compare against open-source implementations [69] of Adam [18], RMSProp [19], Lion [20] and VeLO [16, 45]. We also *learn* two optimizers for the *single-* and *multi-*task settings: ‘*No Features*’, which only conditions on gradient and momentum; and Optim4RL [17] (using ES instead of meta-gradients, as in Lan et al. [17]). Since Optim4RL is initialized close to $\text{sgn}(\text{Adam})$, and tuning its learning rate is too practically expensive, we set a learning rate of $0.1 \times \text{LR}_{\text{Adam}}$ based on Lion [20] (which moves from AdamW to $\text{sgn}(\text{AdamW})$). The optimizer’s weights can be scaled to compensate if this is suboptimal. We primarily consider interquartile mean (IQM) of final return with 95% stratified bootstrap confidence intervals [70]. All hyperparameters can be found in Appendix C.

²Seaquest, which is a part of MinAtar [62], does not have a working implementation in gymnasium [63].

6.2 Single-Task Training Results

Figure 2 shows the performance of OPEN after single-task training. In three MinAtar environments, OPEN **significantly outperform all baselines**, far exceeding previous attempts at learned optimization for RL. Additionally, OPEN beat both learned optimizers in *every* environment. Overall, these experiments show the capability of OPEN to learn highly performant update rules for RL.

Return curves (Appendix E) show that OPEN does not always achieve high returns from the start of training. Instead, OPEN can sacrifice greedy, short-term gains in favor of long-term final return, possibly due to its dynamic update rule. We further analyze the optimizers’ behavior in Appendix F.

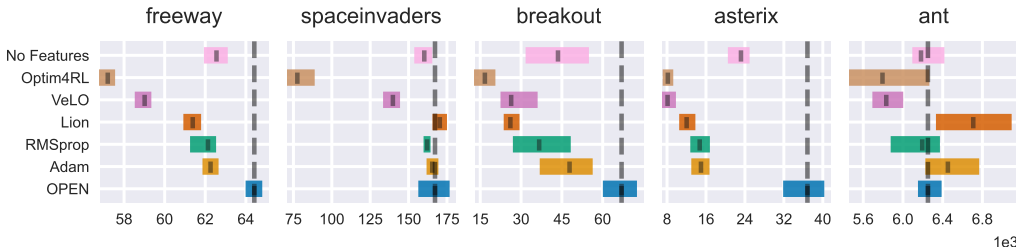


Figure 2: IQM of final returns for the five single-task training environments, evaluated over 16 random environment seeds. We plot 95% stratified bootstrap confidence intervals for each environment.

6.3 Multi-Task Training Results

Figure 3 shows each optimizer’s ability to fit to multiple MinAtar environments [63, 62], where handcrafted optimizers are tuned *per-environment*. We normalize returns with respect to Adam, and aggregate scores over environments to give a single performance metric. Here, we increase the size of the learned optimizers, with details in Appendix B.5. In addition to IQM, we consider the *mean* normalized return to explore the existence of outliers (which often correspond to asterix, where OPEN strongly outperforms Adam), and optimality gap, a metric from Agarwal et al. [70] measuring how close to optimal algorithms are. Unlike single-task training, where optimizers are trained until convergence, we run multi-task experiments for a fixed number of generations (300) to limit compute.

OPEN drastically outperforms **every** optimizer for multi-task training. In particular, OPEN produces the only optimizer with an aggregate score higher than Adam, demonstrating its ability to learn highly expressive update rules which can fit to a range of contexts; no other learned optimizers get close to OPEN in fitting to multiple environments simultaneously. As expected, OPEN prioritizes optimization in asterix and breakout, according to the return curves (Appendix G); we believe better curricula would help to overcome this issue. Interestingly, Optim4RL seems to perform better in the multi-task setting than the single-task setting. This may be due to the increased number of meta-training samples.

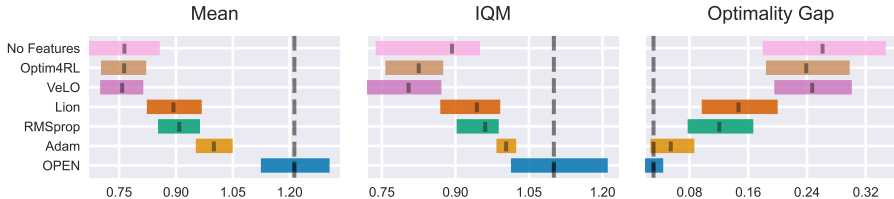


Figure 3: Mean, IQM and optimality gap (smaller = better), evaluated over 16 random seeds *per environment* for the aggregated, Adam-normalized final returns after multi-task training on MinAtar [62, 63]. We plot 95% stratified bootstrap confidence intervals for each metric.

6.4 Generalization

Figure 4 shows OPEN’s ability to generalize in a gridworld setting. We explore *in-distribution* generalization on the left, and *OOS* generalization on the right, where the top row (*rand_dense*, *rand_sparse* and *rand_long*) are from LPG [13, 66] and the bottom row are 3 mazes from Minigrid [67, 66]. We explore an additional dimension of OOS generalization in the agent’s network hidden size; OPEN only saw agents with network hidden sizes of 16 in training, but is tested on larger and smaller agents. We include similar tests for OOS training lengths in Appendix H. We normalize OPEN against Adam, which was tuned for the same distribution and agent that OPEN learned for.

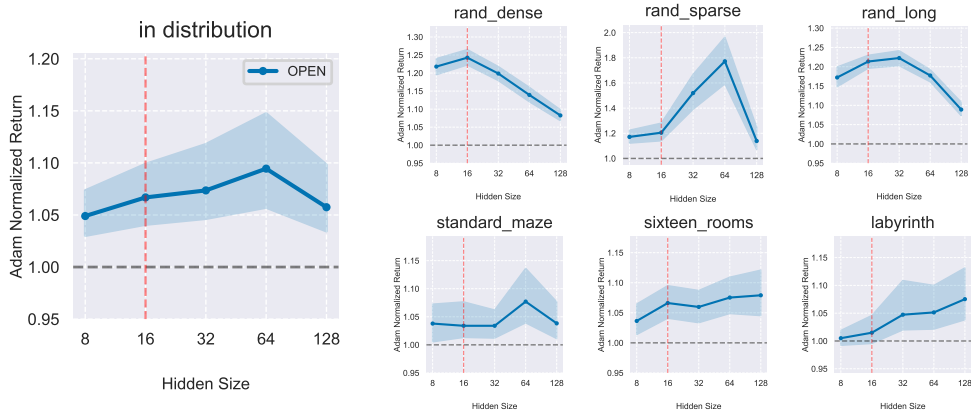


Figure 4: IQM of return, normalized by Adam, in seven gridworlds, with 95% stratified bootstrap confidence intervals for 64 random seeds. On the left, we show performance in the distribution OPEN and Adam were trained and tuned in. On the right, we show OOS performance: the top row shows gridworlds from Oh et al. [13], and the bottom row shows mazes from Chevalier-Boisvert et al. [67]. We mark Hidden Size = 16 as the in-distribution agent size for OPEN and Adam.

OPEN learns update rules that consistently outperform Adam *in-distribution* and *out-of-support* with regards to both the agent and environment; in *every* OOS environment and agent size, OPEN outperformed Adam. In fact, in all but `rand_dense`, its generalization **improves** compared to Adam for some different agent widths, increasing its normalized return. In combination with our findings from Section 6.3, which demonstrate our approach can learn expressive update rules for hard, diverse environments, these results demonstrate the effectiveness of OPEN: if trained on a wide enough distribution, OPEN has the potential to generalize across a wide array of RL problems.

Finally, in Figure 5, we test how the optimizer trained above (i.e., for Figure 4) transfers to Craftax-Classic, an environment with completely different dynamics, *0-shot*. We compare against two baselines: Adam (0-shot), where we tune the hyperparameters of Adam on the distribution of gridworlds that OPEN was trained on; and Adam (Tuned), where the Adam and PPO hyperparameters are tuned directly in Craftax-Classic. The latter gives an idea of the maximum achievable return.

We find that OPEN transfers significantly better than Adam when both are tuned in the same distribution of environments, and performs only marginally worse than Adam tuned directly in-distribution. These results exemplify the generalization capabilities of OPEN and lay the foundation for learning a large scale ‘foundation’ optimizer which could be used for a wide range of RL problems.

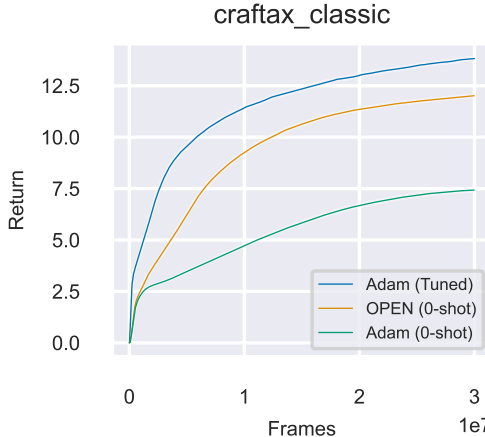


Figure 5: A comparison of OPEN and Adam with and without hyperparameter tuning in Craftax-Classic. We plot mean return over 32 seeds. Standard error is negligible (< 0.06).

7 Ablation Study

In our ablation study, we explore how each constituent of OPEN contributes to improved performance. Firstly, we focus on two specific, measurable challenges: plasticity loss and exploration. Subsequently, we verify that OPEN can be meta-trained for an RL algorithm besides PPO.

7.1 Individual Ablations

We ablate each individual design decision of OPEN in Figure 6. For each ablation, we train 17 optimizers in a shortened version of Breakout [62, 63] and evaluate performance after 64 PPO training runs per optimizer. Further details of the ablation methodology are in Appendix I.

While measuring plasticity loss is important, dormancy alone is not an appropriate performance metric; a newly initialized network has near-zero dormancy but poor performance. Instead, we include dormancy here as one *possible* justification for why some elements of OPEN are useful.

(P1) Ablating *training proportion* directly disables the optimizer’s ability to tackle *training* non-stationarity. Similarly, removing *batch proportion* prevents dynamic behavior within a (stationary) batch. The corresponding decreases in performance show that both timescales of non-stationarity are beneficial, potentially overcoming the impact of non-stationarity in RL.

(P2) Removing *dormancy* as an input has a **drastic** impact on the agent’s return, corresponding to a large increase in plasticity loss. While dormancy plays no *direct* role in the optimizer’s meta-objective, including it as an input gives the optimizer the *capability* to react as neurons grow dormant, as desired.

(P2) Not conditioning on layer proportion has a negative effect on final return. The increase in dormancy from its removal suggests that allowing the optimizer to behave differently for each layer in the network has some positive impact on plasticity loss.

(P2)/(P3) Stochasticity benefits are two-fold: besides enhancing exploration (Section 7.2), it notably lowers dormancy. Though limited to the actor, this reduction likely also contributes to improve return.



Figure 6: IQM of mean final return for 17 trained optimizers *per ablation*, evaluated on 64 random seeds each, alongside mean $\tau = 0$ dormancy for optimizers in the interquartile range. We show 95% stratified bootstrap confidence intervals.

7.2 Exploration

(P3) We verify the benefits of *learnable stochasticity* in Deep Sea, an environment from bsuite [71, 63] designed to analyze *exploration*. This environment returns a small penalty for each *right* action but gives a large positive reward if *right* is selected for *every* action. Therefore, agents need to explore beyond the local optimum of ‘left at each timestep’ to maximize return. Deep Sea’s size can be varied, such that an agent needs to take more consecutive *right* actions to receive reward.

Naïvely applying OPEN to Deep Sea struggles; we posit that optimizing *towards* the gradient can be detrimental to the actor since the gradient leads to a local optimum, whereas in the critic the gradient always points to (beneficially) more accurate value functions. Therefore, we augment OPEN to learn different updates for the actor and critic (*‘separated’*). In Figure 7, we show the disparity between a separated optimizer trained *with* and *without* learnable stochasticity after training for sizes between [4, 26] in a small number of generations (48), noting that larger sizes are OOS for the optimizer. We include full results in Appendix I.2.

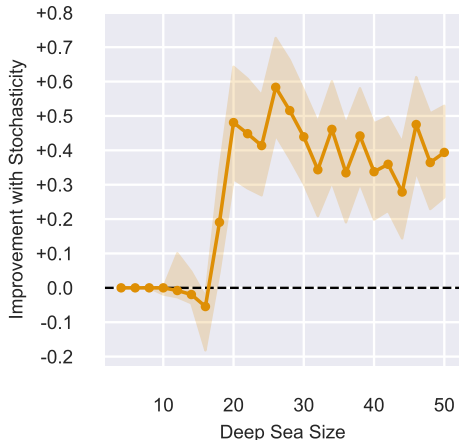


Figure 7: IQM performance improvement of an optimizer with learnable stochasticity over one without. We plot 95% stratified bootstrap confidence intervals over 128 random seeds.

The optimizer with learnable stochasticity consistently achieves higher return in large environments compared to without, suggesting significant exploration benefits. In fact, our analysis (Appendix F.5) finds that, despite being unaware of size, stochasticity increases in larger environments. In other words, the optimizer promotes *more* exploration when size increases. However, stochasticity does

marginally reduce performance in smaller environments; this may be due to the optimizer promoting exploration even after achieving maximum reward, rather than converging to the optimal policy.

7.3 Alternative RL Algorithm

To ensure that OPEN can learn for algorithms beyond PPO, and thus is applicable to a wider range of scenarios, we explore learning an optimizer for PQN [72] in Figure 8. PQN is a vectorized and simplified alternative to DQN [73]. We include analysis and the return curve in Appendix I, and hyperparameters in Appendix C.

We find that, in our single meta-training run, OPEN is able to outperform Adam by a significant margin. Therefore, while PPO was the principle RL algorithm for our experiments, our design decisions for OPEN are applicable to a wider class of RL algorithms. While exploring the ability of OPEN to learn for other common RL algorithms would be useful, Figure 8 provides a confirmation of the versatility of our method.

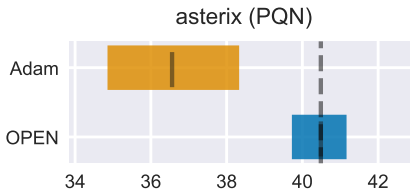


Figure 8: IQM of final return for Adam and OPEN after training PQN in Asterix. We plot 95% stratified bootstrap confidence intervals over 64 seeds.

8 Limitations and Future Work

While OPEN demonstrates strong success in learning a multi-task objective, our current approach of normalizing returns by Adam biases updates towards environments where Adam underperforms learned optimizers. We believe developing better curricula for learning in this settings, akin to unsupervised environment design [66, 74], would be highly impactful future work. This may unlock the potential for larger scale experiments with wider distributions of meta-training environments. Additionally, the OPEN framework need not be limited to the specific difficulties we focus on here. Exploring ways to include other difficulties of RL which can be measured and incorporated into the framework (e.g., sample efficiency or generalization capabilities of a policy) could potentially elevate the usefulness of OPEN even further. Finally, while we show that OPEN can learn for different RL algorithms, further testing with other popular algorithms (e.g., SAC [75], A2C [76]) would be insightful. Furthermore, training OPEN on many RL algorithms simultaneously could unlock a truly generalist learned optimization algorithm for RL. Successfully synthesizing these proposals with additional scale will potentially produce a universal and performant learned optimizer for RL.

9 Conclusion

In this paper, we set out to address some of the major difficulties in RL by meta-learning update rules directly for RL. In particular, we focused on three main challenges: non-stationarity, plasticity loss, and exploration. To do so, we proposed OPEN, a method to train parameterized optimizers that conditions on a set of inputs and uses learnable stochasticity in its output, to specifically target these difficulties. We showed that our method outperforms a range of baselines in four problem settings designed to show the expressibility and generalizability of learned optimizers in RL. Finally, we demonstrated that each design decision of OPEN improved the performance of the optimizer in an ablation study, that the stochasticity in our update expression significantly benefited exploration, and that OPEN was sufficiently versatile to learn with different RL algorithms.

Author Contributions

AG implemented the code, designed and performed all experiments and made the architectural and training design decisions of OPEN. **AG** also provided all analysis and wrote all of the paper.

CL proposed the initial project, contributed the initial implementation framework and provided assistance throughout the project’s timeline.

MJ contributed to experimental and ablation design and helped with editing the manuscript.

SW and **JF** provided advice throughout the project, and in writing the paper.

Acknowledgements

We thank Benjamin Ellis for offering guidance throughout this project, and Pablo Samuel Castro for providing advice in the early stages of the research. We are also grateful to Michael Matthews, Scott le Roux, Juliusz Ziomek and our reviewers for their comments and feedback.

Funding

AG and **MJ** are funded by the EPSRC Centre for Doctoral Training in Autonomous Intelligent Machines and Systems EP/S024050/1. **MJ** is also sponsored by Amazon Web Services. **JF** is partially funded by the UKI grant EP/Y028481/1 (originally selected for funding by the ERC). **JF** is also supported by the JPMC Research Award and the Amazon Research Award. Our experiments were also made possible by a generous equipment grant from NVIDIA.

References

- [1] Richard S. Sutton and Andrew G. Barto. *Reinforcement Learning: An Introduction*. The MIT Press, second edition, 2018. URL <http://incompleteideas.net/book/the-book-2nd.html>.
- [2] David Silver, Aja Huang, Chris J. Maddison, Arthur Guez, Laurent Sifre, George van den Driessche, Julian Schrittwieser, Ioannis Antonoglou, Veda Panneershelvam, Marc Lanctot, Sander Dieleman, Dominik Grewe, John Nham, Nal Kalchbrenner, Ilya Sutskever, Timothy Lillicrap, Madeleine Leach, Koray Kavukcuoglu, Thore Graepel, and Demis Hassabis. Mastering the game of Go with deep neural networks and tree search. *Nature*, 529(7587):484–489, January 2016. ISSN 1476-4687. doi: 10.1038/nature16961.
- [3] David Silver, Thomas Hubert, Julian Schrittwieser, Ioannis Antonoglou, Matthew Lai, Arthur Guez, Marc Lanctot, Laurent Sifre, Dharshan Kumaran, Thore Graepel, Timothy Lillicrap, Karen Simonyan, and Demis Hassabis. A general reinforcement learning algorithm that masters chess, shogi, and Go through self-play. *Science (New York, N.Y.)*, 362(6419):1140–1144, 2018. doi: 10.1126/science.aar6404.
- [4] Matt Barnes, Matthew Abueg, Oliver F. Lange, Matt Deeds, Jason Trader, Denali Molitor, Markus Wulfmeier, and Shawn O’Banion. Massively Scalable Inverse Reinforcement Learning in Google Maps. *arXiv preprint arXiv:2305.11290*, 2023. doi: 10.48550/arXiv.2305.11290.
- [5] Daniel J. Mankowitz, Andrea Michi, Anton Zhernov, Marco Gelmi, Marco Selvi, Cosmin Paduraru, Edouard Leurent, Shariq Iqbal, Jean-Baptiste Lespiau, Alex Ahern, Thomas Köppe, Kevin Millikin, Stephen Gaffney, Sophie Elster, Jackson Broshear, Chris Gamble, Kieran Milan, Robert Tung, Minjae Hwang, Taylan Cemgil, Mohammadamin Barekatain, Yujia Li, Amol Mandhane, Thomas Hubert, Julian Schrittwieser, Demis Hassabis, Pushmeet Kohli, Martin Riedmiller, Oriol Vinyals, and David Silver. Faster sorting algorithms discovered using deep reinforcement learning. *Nature*, 618(7964):257–263, June 2023. ISSN 1476-4687. doi: 10.1038/s41586-023-06004-9.
- [6] Paul Christiano, Jan Leike, Tom B. Brown, Miljan Martic, Shane Legg, and Dario Amodei. Deep reinforcement learning from human preferences, February 2023.
- [7] Long Ouyang, Jeff Wu, Xu Jiang, Diogo Almeida, Carroll L. Wainwright, Pamela Mishkin, Chong Zhang, Sandhini Agarwal, Katarina Slama, Alex Ray, John Schulman, Jacob Hilton, Fraser Kelton, Luke Miller, Maddie Simens, Amanda Askell, Peter Welinder, Paul Christiano, Jan Leike, and Ryan Lowe. Training language models to follow instructions with human feedback, March 2022.
- [8] Maximilian Igl, Gregory Farquhar, Jelena Luketina, Wendelin Boehmer, and Shimon Whiteson. Transient non-stationarity and generalisation in deep reinforcement learning. In *International Conference on Learning Representations*, 2021.
- [9] Clare Lyle, Zeyu Zheng, Evgenii Nikishin, Bernardo Avila Pires, Razvan Pascanu, and Will Dabney. Understanding plasticity in neural networks. In *Proceedings of the 40th International Conference on Machine Learning*, ICML’23. JMLR.org, 2023.
- [10] Clare Lyle, Zeyu Zheng, Khimya Khetarpal, Hado van Hasselt, Razvan Pascanu, James Martens, and Will Dabney. Disentangling the causes of plasticity loss in neural networks, 2024.
- [11] Matthias Plappert, Rein Houthoofd, Prafulla Dhariwal, Szymon Sidor, Richard Y. Chen, Xi Chen, Tamim Asfour, Pieter Abbeel, and Marcin Andrychowicz. Parameter Space Noise for Exploration. In *International Conference on Learning Representations*, February 2018.

- [12] Jacob Beck, Risto Vuorio, Evan Zheran Liu, Zheng Xiong, Luisa Zintgraf, Chelsea Finn, and Shimon Whiteson. A Survey of Meta-Reinforcement Learning. *arXiv preprint arXiv:2301.08028*, 2023.
- [13] Junhyuk Oh, Matteo Hessel, Wojciech M Czarnecki, Zhongwen Xu, Hado P van Hasselt, Satinder Singh, and David Silver. Discovering reinforcement learning algorithms. *Advances in Neural Information Processing Systems*, 33:1060–1070, 2020.
- [14] Louis Kirsch, Sjoerd van Steenkiste, and Juergen Schmidhuber. Improving generalization in meta reinforcement learning using learned objectives. In *International Conference on Learning Representations*, 2020.
- [15] Chris Lu, Jakub Kuba, Alistair Letcher, Luke Metz, Christian Schroeder de Witt, and Jakob Foerster. Discovered policy optimisation. *Advances in Neural Information Processing Systems*, 35:16455–16468, 2022.
- [16] Luke Metz, James Harrison, C. Daniel Freeman, Amil Merchant, Lucas Beyer, James Bradbury, Naman Agrawal, Ben Poole, Igor Mordatch, Adam Roberts, and Jascha Sohl-Dickstein. VeLO: Training Versatile Learned Optimizers by Scaling Up. *arXiv preprint arXiv:2211.09760*, 2022.
- [17] Qingfeng Lan, A. Rupam Mahmood, Shuicheng Yan, and Zhongwen Xu. Learning to Optimize for Reinforcement Learning. *arXiv preprint arXiv:2302.01470*, 2023.
- [18] Diederik P. Kingma and Jimmy Ba. Adam: A Method for Stochastic Optimization. *arXiv preprint arXiv:1412.6980*, 2017.
- [19] Tijmen Tieleman, Geoffrey Hinton, et al. Lecture 6.5-rmsprop: Divide the gradient by a running average of its recent magnitude. *COURSERA: Neural networks for machine learning*, 4(2):26–31, 2012.
- [20] Xiangning Chen, Chen Liang, Da Huang, Esteban Real, Kaiyuan Wang, Yao Liu, Hieu Pham, Xuanyi Dong, Thang Luong, Cho-Jui Hsieh, Yifeng Lu, and Quoc V. Le. Symbolic Discovery of Optimization Algorithms. *arXiv preprint arXiv:2302.06675*, 2023.
- [21] Michael Matthews, Michael Beukman, Benjamin Ellis, Mikayel Samvelyan, Matthew Jackson, Samuel Coward, and Jakob Foerster. Craftax: A lightning-fast benchmark for open-ended reinforcement learning. In *International Conference on Machine Learning (ICML)*, 2024.
- [22] John Schulman, Filip Wolski, Prafulla Dhariwal, Alec Radford, and Oleg Klimov. Proximal Policy Optimization Algorithms. *arXiv preprint arXiv:1707.06347*, 2017.
- [23] Marcin Andrychowicz, Misha Denil, Sergio Gomez Colmenarejo, Matthew W. Hoffman, David Pfau, Tom Schaul, and Nando de Freitas. Learning to learn by gradient descent by gradient descent. In *Neural Information Processing Systems*, 2016.
- [24] Luke Metz, Niru Maheswaranathan, C. Daniel Freeman, Ben Poole, and Jascha Sohl-Dickstein. Tasks, stability, architecture, and compute: Training more effective learned optimizers, and using them to train themselves. *arXiv preprint arXiv:2009.11243*, 2020.
- [25] Ingo Rechenberg. Evolutionsstrategie : Optimierung technischer systeme nach prinzipien der biologischen evolution. 1973.
- [26] Tim Salimans, Jonathan Ho, Xi Chen, Szymon Sidor, and Ilya Sutskever. Evolution Strategies as a Scalable Alternative to Reinforcement Learning. *arXiv preprint arXiv:1703.03864*, 2017.
- [27] Paul Vicol, Luke Metz, and Jascha Sohl-Dickstein. Unbiased gradient estimation in unrolled computation graphs with persistent evolution strategies. In *International Conference on Machine Learning*, pages 10553–10563. PMLR, 2021.
- [28] Felipe Petroski Such, Vashisht Madhavan, Edoardo Conti, Joel Lehman, Kenneth O. Stanley, and Jeff Clune. Deep Neuroevolution: Genetic Algorithms Are a Competitive Alternative for Training Deep Neural Networks for Reinforcement Learning. *arXiv preprint arXiv:1712.06567*, 2018.
- [29] Nikolaus Hansen and Andreas Ostermeier. Completely derandomized self-adaptation in evolution strategies. *Evolutionary Computation*, 9(2):159–195, 2001. doi: 10.1162/106365601750190398.
- [30] Daan Wierstra, Tom Schaul, Tobias Glasmachers, Yi Sun, Jan Peters, and Jürgen Schmidhuber. Natural evolution strategies. *Journal of Machine Learning Research*, 15(27):949–980, 2014.
- [31] John Geweke. Antithetic acceleration of Monte Carlo integration in Bayesian inference. *Journal of Econometrics*, 38(1):73–89, 1988.

- [32] Matthew Jackson, Chris Lu, Louis Kirsch, Robert Lange, Shimon Whiteson, and Jakob Foerster. Discovering temporally-aware reinforcement learning algorithms. In *Second Agent Learning in Open-Endedness Workshop*, 2023.
- [33] James Bradbury, Roy Frostig, Peter Hawkins, Matthew James Johnson, Chris Leary, Dougal Maclaurin, George Necula, Adam Paszke, Jake VanderPlas, Skye Wanderman-Milne, and Qiao Zhang. JAX: Composable transformations of Python+NumPy programs, 2018.
- [34] Robert Tjarko Lange. Evosax: JAX-based Evolution Strategies. *arXiv preprint arXiv:2212.04180*, 2022.
- [35] Ashia C Wilson, Rebecca Roelofs, Mitchell Stern, Nati Srebro, and Benjamin Recht. The marginal value of adaptive gradient methods in machine learning. *Advances in neural information processing systems*, 30, 2017.
- [36] Sashank J. Reddi, Satyen Kale, and Sanjiv Kumar. On the convergence of adam and beyond. In *International Conference on Learning Representations*, 2018.
- [37] Peter Henderson, Joshua Romoff, and Joelle Pineau. Where Did My Optimum Go?: An Empirical Analysis of Gradient Descent Optimization in Policy Gradient Methods. *arXiv preprint arXiv:1810.02525*, 2018.
- [38] Emmanuel Bengio, Joelle Pineau, and Doina Precup. Correcting Momentum in Temporal Difference Learning. *arXiv preprint arXiv:2106.03955*, 2021.
- [39] Richard S. Sutton. Learning to predict by the methods of temporal differences. *Machine Learning*, 3:9–44, 1988.
- [40] Mehmet Sarigül and Mutlu Avci. Performance comparison of different momentum techniques on deep reinforcement learning. In *2017 IEEE International Conference on INnovations in Intelligent SysTems and Applications (INISTA)*, pages 302–306, 2017.
- [41] D.M. Bossens, N.C. Townsend, and A.J. Sobey. Learning to learn with active adaptive perception. *Neural Networks*, 115:30–49, 2019. ISSN 0893-6080. doi: 10.1016/j.neunet.2019.03.006.
- [42] Ke Li and Jitendra Malik. Learning to optimize. In *International Conference on Learning Representations*, 2017.
- [43] Diogo Almeida, Clemens Winter, Jie Tang, and Wojciech Zaremba. A Generalizable Approach to Learning Optimizers. *arXiv preprint arXiv:2106.00958*, 2021.
- [44] Olga Wichrowska, Niru Maheswaranathan, Matthew W. Hoffman, Sergio Gómez Colmenarejo, Misha Denil, Nando de Freitas, and Jascha Sohl-Dickstein. Learned optimizers that scale and generalize. In *Proceedings of the 34th International Conference on Machine Learning - Volume 70, ICML’17*, pages 3751–3760. JMLR.org, 2017.
- [45] Luke Metz, C Daniel Freeman, James Harrison, Niru Maheswaranathan, and Jascha Sohl-Dickstein. Practical tradeoffs between memory, compute, and performance in learned optimizers. In *Conference on Lifelong Learning Agents*, pages 142–164. PMLR, 2022. URL http://github.com/google/learned_optimization.
- [46] Erik Gärtner, Luke Metz, Mykhaylo Andriluka, C. Daniel Freeman, and Cristian Sminchisescu. Transformer-based learned optimization. In *Proceedings of the IEEE/CVF Conference on Computer Vision and Pattern Recognition (CVPR)*, pages 11970–11979, June 2023.
- [47] Luke Metz, Niru Maheswaranathan, Brian Cheung, and Jascha Narain Sohl-Dickstein. Meta-learning update rules for unsupervised representation learning. *arXiv preprint arXiv:1804.00222*, 2018.
- [48] Ilya Loshchilov and Frank Hutter. Decoupled weight decay regularization. In *International Conference on Learning Representations*, 2019.
- [49] Ghada Sokar, Rishabh Agarwal, Pablo Samuel Castro, and Utku Evci. The dormant neuron phenomenon in deep reinforcement learning. In *Proceedings of the 40th International Conference on Machine Learning, ICML’23*. JMLR.org, 2023.
- [50] Clare Lyle, Mark Rowland, and Will Dabney. Understanding and preventing capacity loss in reinforcement learning. In *International Conference on Learning Representations*, 2022.
- [51] Hojoon Lee, Hanseul Cho, Hyunseung Kim, Daehoon Gwak, Joonkee Kim, Jaegul Choo, Se-Young Yun, and Chulhee Yun. PLASTIC: Improving Input and Label Plasticity for Sample Efficient Reinforcement Learning. In *Thirty-Seventh Conference on Neural Information Processing Systems*, November 2023.

- [52] Guozheng Ma, Lu Li, Sen Zhang, Zixuan Liu, Zhen Wang, Yixin Chen, Li Shen, Xueqian Wang, and Dacheng Tao. Revisiting Plasticity in Visual Reinforcement Learning: Data, Modules and Training Stages. *arXiv preprint arXiv:2310.07418*, 2023.
- [53] Zaheer Abbas, Rosie Zhao, Joseph Modayil, Adam White, and Marlos C. Machado. Loss of Plasticity in Continual Deep Reinforcement Learning. *arXiv preprint arXiv:2303.07507*, 2023.
- [54] Kyunghyun Cho, Bart van Merriënboer, Dzmitry Bahdanau, and Yoshua Bengio. On the properties of neural machine translation: Encoder–Decoder approaches. In *Proceedings of SSST-8, Eighth Workshop on Syntax, Semantics and Structure in Statistical Translation*, pages 103–111, 2014.
- [55] Jimmy Lei Ba, Jamie Ryan Kiros, and Geoffrey E. Hinton. Layer Normalization. *arXiv preprint arXiv:1607.06450*, 2016.
- [56] Shengyi Huang, Rousslan Fernand Julien Dossa, Antonin Raffin, Anssi Kanervisto, and Weixun Wang. The 37 implementation details of proximal policy optimization. In *ICLR Blog Track, 2022*. URL <https://iclr-blog-track.github.io/2022/03/25/ppo-implementation-details/>. <https://iclr-blog-track.github.io/2022/03/25/ppo-implementation-details/>.
- [57] Ilya Loshchilov and Frank Hutter. SGDR: Stochastic gradient descent with warm restarts. In *International Conference on Learning Representations*, 2017. URL <https://openreview.net/forum?id=Skq89Scxx>.
- [58] Leslie N. Smith. Cyclical learning rates for training neural networks. In *2017 IEEE Winter Conference on Applications of Computer Vision (WACV)*, pages 464–472, 2017. doi: 10.1109/WACV.2017.58.
- [59] Evgenii Nikishin, Max Schwarzer, Pierluca D’Oro, Pierre-Luc Bacon, and Aaron Courville. The primacy bias in deep reinforcement learning. In Kamalika Chaudhuri, Stefanie Jegelka, Le Song, Csaba Szepesvari, Gang Niu, and Sivan Sabato, editors, *Proceedings of the 39th International Conference on Machine Learning*, volume 162 of *Proceedings of Machine Learning Research*, pages 16828–16847. PMLR, July 2022.
- [60] Evgenii Nikishin, Junhyuk Oh, Georg Ostrovski, Clare Lyle, Razvan Pascanu, Will Dabney, and Andre Barreto. Deep reinforcement learning with plasticity injection. In *Workshop on Reincarnating Reinforcement Learning at ICLR 2023*, 2023.
- [61] Robert Kirk, Amy Zhang, Edward Grefenstette, and Tim Rocktäschel. A Survey of Zero-shot Generalisation in Deep Reinforcement Learning. *Journal of Artificial Intelligence Research*, 76:201–264, January 2023.
- [62] Kenny Young and Tian Tian. MinAtar: An atari-inspired testbed for thorough and reproducible reinforcement learning experiments. *arXiv preprint arXiv:1903.03176*, 2019.
- [63] Robert Tjarko Lange. gymmax: A JAX-based reinforcement learning environment library, 2022.
- [64] C. Daniel Freeman, Erik Frey, Anton Raichuk, Sertan Girgin, Igor Mordatch, and Olivier Bachem. Brax - a differentiable physics engine for large scale rigid body simulation, 2021.
- [65] Emanuel Todorov, Tom Erez, and Yuval Tassa. MuJoCo: A physics engine for model-based control. In *2012 IEEE/RSJ International Conference on Intelligent Robots and Systems*, pages 5026–5033. IEEE, 2012.
- [66] Matthew Thomas Jackson, Minqi Jiang, Jack Parker-Holder, Risto Vuorio, Chris Lu, Gregory Farquhar, Shimon Whiteson, and Jakob Nicolaus Foerster. Discovering general reinforcement learning algorithms with adversarial environment design. In *Advances in Neural Information Processing Systems*, volume 36, 2023.
- [67] Maxime Chevalier-Boisvert, Bolun Dai, Mark Towers, Rodrigo de Lazcano, Lucas Willems, Salem Lahlou, Suman Pal, Pablo Samuel Castro, and Jordan Terry. Minigrid & Miniworld: Modular & Customizable Reinforcement Learning Environments for Goal-Oriented Tasks, June 2023.
- [68] Danijar Hafner. Benchmarking the spectrum of agent capabilities. *arXiv preprint arXiv:2109.06780*, 2021.
- [69] DeepMind, Igor Babuschkin, Kate Baumli, Alison Bell, Surya Bhupatiraju, Jake Bruce, Peter Buchlovsky, David Budden, Trevor Cai, Aidan Clark, Ivo Danihelka, Antoine Dedieu, Claudio Fantacci, Jonathan Godwin, Chris Jones, Ross Hemsley, Tom Hennigan, Matteo Hessel, Shaobo Hou, Steven Kapturowski, Thomas Keck, Iurii Kemaev, Michael King, Markus Kunesch, Lena Martens, Hamza Merzic, Vladimir Mikulik, Tamara Norman, George Papamakarios, John Quan, Roman Ring, Francisco Ruiz, Alvaro Sanchez, Laurent Sartran, Rosalia Schneider, Eren Sezener, Stephen Spencer, Srivatsan Srinivasan, Miloš Stanojević, Wojciech Stokowiec, Luyu Wang, Guangyao Zhou, and Fabio Viola. The DeepMind JAX Ecosystem, 2020. URL <http://github.com/google-deeppmind>.

- [70] Rishabh Agarwal, Max Schwarzer, Pablo Samuel Castro, Aaron Courville, and Marc G Bellemare. Deep reinforcement learning at the edge of the statistical precipice. *Advances in Neural Information Processing Systems*, 2021.
- [71] Ian Osband, Yotam Doron, Matteo Hessel, John Aslanides, Eren Sezener, Andre Saraiva, Katrina McKinney, Tor Lattimore, Csaba Szepesvári, Satinder Singh, Benjamin Van Roy, Richard Sutton, David Silver, and Hado van Hasselt. Behaviour suite for reinforcement learning. In *International Conference on Learning Representations*, 2020. URL <https://openreview.net/forum?id=rygf-kSYwH>.
- [72] Matteo Gallici, Mattie Fellows, Benjamin Ellis, Bartomeu Pou, Ivan Masmijtja, Jakob Nicolaus Foerster, and Mario Martin. Simplifying deep temporal difference learning, 2024. URL <https://arxiv.org/abs/2407.04811>.
- [73] Volodymyr Mnih, Koray Kavukcuoglu, David Silver, Andrei A. Rusu, Joel Veness, Marc G. Bellemare, Alex Graves, Martin Riedmiller, Andreas K. Fidjeland, Georg Ostrovski, Stig Petersen, Charles Beattie, Amir Sadik, Ioannis Antonoglou, Helen King, Dharshan Kumaran, Daan Wierstra, Shane Legg, and Demis Hassabis. Human-level control through deep reinforcement learning. *Nature*, 518(7540):529–533, February 2015.
- [74] Michael Dennis, Natasha Jaques, Eugene Vinitzky, Alexandre Bayen, Stuart Russell, Andrew Critch, and Sergey Levine. Emergent complexity and zero-shot transfer via unsupervised environment design. In *Proceedings of the 34th International Conference on Neural Information Processing Systems, NIPS '20*, pages 13049–13061, Red Hook, NY, USA, December 2020. Curran Associates Inc. ISBN 978-1-71382-954-6.
- [75] Tuomas Haarnoja, Aurick Zhou, Pieter Abbeel, and Sergey Levine. Soft Actor-Critic: Off-Policy Maximum Entropy Deep Reinforcement Learning with a Stochastic Actor, August 2018.
- [76] Volodymyr Mnih, Adrià Puigdomènech Badia, Mehdi Mirza, Alex Graves, Timothy P. Lillicrap, Tim Harley, David Silver, and Koray Kavukcuoglu. Asynchronous Methods for Deep Reinforcement Learning, June 2016.
- [77] John Schulman, Philipp Moritz, Sergey Levine, Michael Jordan, and Pieter Abbeel. High-Dimensional Continuous Control Using Generalized Advantage Estimation, October 2018.
- [78] Kavosh Asadi, Rasool Fakoor, and Shoham Sabach. Resetting the optimizer in deep RL: An empirical study. *arXiv preprint arXiv:2306.17833*, 2023.
- [79] Johan Obando-Ceron, Marc G. Bellemare, and Pablo Samuel Castro. Small batch deep reinforcement learning. *arXiv preprint arXiv:2310.03882*, 2023.
- [80] Pierluca D’Oro, Max Schwarzer, Evgenii Nikishin, Pierre-Luc Bacon, Marc G. Bellemare, and Aaron Courville. Sample-Efficient Reinforcement Learning by Breaking the Replay Ratio Barrier. In *The Eleventh International Conference on Learning Representations*, September 2022.
- [81] Max Schwarzer, Johan Samir Obando Ceron, Aaron Courville, Marc G Bellemare, Rishabh Agarwal, and Pablo Samuel Castro. Bigger, better, faster: Human-level atari with human-level efficiency. In *International Conference on Machine Learning*, pages 30365–30380. PMLR, 2023.
- [82] Ronen I. Brafman and Moshe Tennenholtz. R-MAX - A General Polynomial Time Algorithm for Near-Optimal Reinforcement Learning. *Journal of Machine Learning Research*, 3:213–231, Oct 2002.
- [83] Michael Kearns and Satinder Singh. Near-Optimal Reinforcement Learning in Polynomial Time. *Machine Learning*, 49(2):209–232, November 2002.
- [84] Peter Auer, Thomas Jaksch, and Ronald Ortner. Near-optimal regret bounds for reinforcement learning. In D. Koller, D. Schuurmans, Y. Bengio, and L. Bottou, editors, *Advances in Neural Information Processing Systems*, volume 21, 2008.
- [85] Haoran Tang, Rein Houthoofd, Davis Foote, Adam Stooke, OpenAI Xi Chen, Yan Duan, John Schulman, Filip DeTurck, and Pieter Abbeel. #Exploration: A study of count-based exploration for deep reinforcement learning. *Advances in neural information processing systems*, 30, 2017.
- [86] Georg Ostrovski, Marc G Bellemare, Aäron Oord, and Rémi Munos. Count-based exploration with neural density models. In *International Conference on Machine Learning*, pages 2721–2730. PMLR, 2017.
- [87] Bradley C. Stadie, Sergey Levine, and Pieter Abbeel. Incentivizing Exploration In Reinforcement Learning With Deep Predictive Models. *arXiv preprint arXiv:1507.00814*, 2015.

- [88] Sainbayar Sukhbaatar, Zeming Lin, Ilya Kostrikov, Gabriel Synnaeve, Arthur Szlam, and Rob Fergus. Intrinsic motivation and automatic curricula via asymmetric self-play. In *International Conference on Learning Representations*, 2018.
- [89] Rein Houthoofd, Xi Chen, Xi Chen, Yan Duan, John Schulman, Filip De Turck, and Pieter Abbeel. VIME: Variational information maximizing exploration. In D. Lee, M. Sugiyama, U. Luxburg, I. Guyon, and R. Garnett, editors, *Advances in Neural Information Processing Systems*, volume 29. Curran Associates, Inc., 2016.
- [90] Luke Metz, Niru Maheswaranathan, Jeremy Nixon, Daniel Freeman, and Jascha Sohl-Dickstein. Understanding and correcting pathologies in the training of learned optimizers. In Kamalika Chaudhuri and Ruslan Salakhutdinov, editors, *Proceedings of the 36th International Conference on Machine Learning*, volume 97 of *Proceedings of Machine Learning Research*, pages 4556–4565. PMLR, June 2019.

A Additional Details: Difficulties in RL

(Problem 1) Non-stationarity Igl et al. [8] highlights different sources of non-stationarity across a range of RL algorithms. For PPO, non-stationarity arises due to a changing state visitation distribution, the target value function $V^\pi(s)$ depending on the updating policy and bootstrapping from the generalized advantage estimate [77]. Since PPO batches rollouts, non-stationarity occurs between each batch; within the same batch, the agent solves a *stationary problem*. As the non-stationarity occurs over the course of training, we denote it *training non-stationarity*.

Optimizers designed for stationarity, like Adam [18], have been shown to struggle in non-stationary settings [9] and techniques to deal with non-stationarity have been proposed. Asadi et al. [78] prevent *contamination* between batches by resetting their optimizer state, including resetting their momentum. However, this handcrafted approach is potentially too severe, as it fails to take advantage of *potentially* useful commonality between batches.

(Problem 2) Plasticity loss Plasticity loss, which refers to an inability to fit to new objective over the course of training, is an important problem in RL. As an agent learns, both its input and target distributions change (i.e., nonstationarity, **(P1)**). This means the agent needs to fit new objectives during training, emphasizing the importance of maintaining plasticity *throughout* training. Therefore, there have been many handcrafted attempts to reduce plasticity loss in RL. Abbas et al. [53] find that different activation functions can help prevent plasticity loss, Obando-Ceron et al. [79] suggest using smaller batches to increase plasticity and Nikishin et al. [60] introduces new output heads throughout training. Many have demonstrated the effectiveness of resetting parts of the network [80, 59, 81, 49], though this runs the risk of losing *some* previously learned, useful information. Additionally, these approaches are all *hyperparameter-dependent* and unlikely to eliminate plasticity loss robustly.

(Problem 3) Exploration Exploration in RL has a rich history of methodologies: [82–84], to name a few. While there are simple, heuristic approaches, like ϵ -greedy [1], recent methods have been designed to deal with complex, high dimensional domains. These include count based methods [85, 86], learned exploration models [87, 88] or using variational techniques [89]. Parameter space noise [11] involves noising each parameter in an agent to enable exploration across different rollouts while behaving consistently within a given rollout. This inspired our approach to exploration since it is algorithm-agnostic and can be implemented directly in the optimizer.

B Optimizer Details

B.1 Algorithm

We detail an example update step when using OPEN. We use notation from Appendix B.2, and use z_t^{GRU} to refer to the GRU hidden state at update t . In this algorithm, we assume the dormancy for each neuron has been *tilled* over the relevant parameters. In practice, we build our optimizer around the library from Metz et al. [45].

Algorithm 1: Example update step from OPEN.

Given: opt , N_{batch} , $N_{minibatches}$, L , H , β , α_1 , α_2 , α_3
Input: \mathbf{g}_t , \mathbf{m}_{t-1} , \mathbf{p}_t , t , **dormancies** $_t$, \mathbf{h} , \mathbf{z}_{t-1}^{GRU}
Output: $(\mathbf{p}_{t+1}, \mathbf{m}_t, \mathbf{z}_t^{GRU})$

```

/* Compute new momentums */
for each  $\beta$  do
    |  $m_t^\beta = \beta \times m_{t-1}^\beta + (1 - \beta) \times g_t$ 
end
/* Compute training and batch proportions */
 $TP = (t // (L * N_{minibatches})) / N_{batch}$ 
 $BP = ((t // N_{minibatches}) \bmod L) / L$ 
/* Compute first stage of update */
for each parameter  $i$  in agent do
    | input = [sgn( $g_{(t,i)}$ ), log( $g_{(t,i)}$ ), sgn( $\mathbf{m}_{(t,i)}$ ), log( $\mathbf{m}_{(t,i)}$ ),  $p_{(t,i)}$ ,  $TP$ ,  $BP$ ,  $D_{(t,i)}$ ,  $h_i$ ]
    |  $\text{GRU}_{out}, z_{(t,i)}^{GRU} = \text{opt}^{GRU}(\text{input}, z_{(t-1,i)}^{GRU})$ 
    |  $m_i, e_i, \delta_i = \text{opt}^{MLP}(\text{GRU}_{out})$ 
    |  $\hat{u}_i = \alpha_1 m_i \exp \alpha_2 e_i$ 
    | if  $i$  in actor then
    | |  $\hat{u}_i = \hat{u}_i + \alpha_3 \delta_i \epsilon$ 
    | end
end
/* Zero-mean updates and apply them */
for each parameter  $i$  in agent do
    |  $u_i = \hat{u}_i - \mathbb{E}_i[\hat{u}_i]$ 
    |  $p_{(t+1,i)} = p_{(t,i)} - u_i$ 
end
return  $(\mathbf{p}_{t+1}, \mathbf{m}_t, \mathbf{z}_t^{GRU})$ 

```

B.2 Input Features to the Optimizer

Our full list of features is concatenated and fed into the optimizer, as in algorithm 1 below. We use some notation from Table 3. These features are:

- Gradient g , processed with the transformation $g \rightarrow \{\text{sign}(g), \log(g + \epsilon)\}$.
- Momentum m calculated with the following β coefficients: $[0.1, 0.5, 0.9, 0.99, 0.999, 0.9999]$. This is processed with the transformation $m_i \rightarrow \{\text{sign}(m_i), \log(m_i + \epsilon)\}$ for each β_i .
- Current value of the parameter p .
- Training proportion, or how far the current batch is through the total number of batches. Since the total number of batches is calculated as $N_{batch} = (T // N_{steps}) // N_{envs}$, this is defined as $(t // (L * N_{minibatches})) / N_{batch}$, where t is the current update iteration. We use a floor division operator as training proportion should be constant through a batch.
- Batch proportion, or how far the current update is through training with the same batch, calculated as $((t // N_{minibatches}) \bmod L) / L$.

- Dormancy, D , calculated for the neuron downstream of the parameter using equation 6. This is repeated over parameters with the same downstream neuron.
- Proportion of the current layer through the network, h/H .

The gradient, momentum and parameter value features are normalized to have a second moment of 1 across the tensor, following Metz et al. [90, 45], as a normalization strategy which preserves *direction*. Like Lan et al. [17], we process gradients and momentum as $x \rightarrow \{\text{sign}(x), \log(x + \epsilon)\}$ to magnify the difference between small values.

B.3 Optimizer Architecture Figure

Figure 9 visually demonstrates the architecture of OPEN. Since only the actor is updated with learned stochasticity (δ^{actor}), we multiply the sampled noise ϵ with a 1/0 mask for the actor/critic.

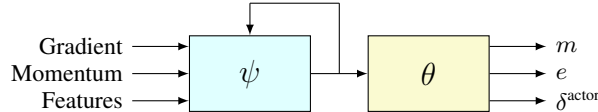


Figure 9: A visualization of the architecture used by OPEN. ψ are parameters of a GRU and θ are parameters of an MLP. Since δ^{actor} only applies to the actor’s update expression, we set the noise to zero for the critic to keep its updates deterministic.

B.4 Single-Task and Gridworld Optimizer Architecture Details

The details of the layer sizes of OPEN in both the single-task and gridworld settings are in Table 1.

Table 1: Optimizer layer sizes for OPEN in the single-task and gridworld experiments.

Layer Type	Dimensionality
<i>GRU</i>	[19, 8]
<i>Fully Connected</i>	[8, 16]
<i>Layernorm</i>	–
<i>Fully Connected</i>	[16, 16]
<i>Layernorm</i>	–
<i>Fully Connected</i>	[16, 3]

In our update rule, we let $\alpha_1 = \alpha_2 = \alpha_3 = 0.001$. We mask out the third output in the critic by setting the noise (ϵ) to zero; otherwise, updates to our critic would be non-deterministic.

We use layers of the same size in ‘No Features’, but condition on less inputs (14) and do not have the third output. We use the same architecture as Lan et al. [17] for Optim4RL, which includes two networks, each comprising a size 8 GRU, and two size 16 fully connected layers.

B.5 Multi-Task Optimizer Architecture Details

When training optimizers for the multi-task setting (Section 6.3), we find increasing the network sizes consistently benefits performance. We show the architecture for OPEN in this experiment in Table 2, masking out the noise for the critic by setting $\epsilon = 0$. We also enlarge *No Features* and Optim4RL by doubling the GRU sizes to 16 and the hidden layers to size 32.

Table 2: Optimizer layer sizes for OPEN in the multi-task experiment.

Layer Type	Dimensionality
<i>GRU</i>	[19, 16]
<i>Fully Connected</i>	[16, 32]
<i>Layernorm</i>	–
<i>Fully Connected</i>	[32, 32]
<i>Layernorm</i>	–
<i>Fully Connected</i>	[32, 3]

C Hyperparameters

C.1 PPO Hyperparameters

PPO hyperparameters for the environments included in our experiments are shown in Table 3. For our gridworld experiments, we learned OPEN and tuned Adam [18] for a PPO agent with $W = 16$, but evaluated on widths $W \in [8, 16, 32, 64, 128]$. Hyperparameters for PPO are taken from [32] where possible.

Table 3: PPO hyperparameters. All MinAtar environments used common PPO parameters, and are thus under one header.

Hyperparameter	Environment		
	MinAtar	Ant	Gridworld
<i>Number of Environments N_{envs}</i>	64	2048	1024
<i>Number of Environment Steps N_{steps}</i>	128	10	20
<i>Total Timesteps T</i>	1×10^7	5×10^7	3×10^7
<i>Number of Minibatches $N_{minibatch}$</i>	8	32	16
<i>Number of Epochs L</i>	4	4	2
<i>Discount Factor γ</i>	0.99	0.99	0.99
<i>GAE λ</i>	0.95	0.95	0.95
<i>PPO Clip ϵ</i>	0.2	0.2	0.2
<i>Value Function Coefficient c_1</i>	0.5	0.5	0.5
<i>Entropy Coefficient c_2</i>	0.01	0	0.01
<i>Max Gradient Norm</i>	0.5	0.5	0.5
<i>Layer Width W</i>	64	64	16
<i>Number of Hidden Layers H</i>	2	2	2
<i>Activation</i>	ReLU	tanh	tanh

C.2 Optimization Hyperparameters

For Adam, RMSprop and Lion, we tune hyperparameters with fixed PPO hyperparameters. For each environment we run a sweep and evaluate performance over four seeds (eight in the gridworld), picking the combination with the highest final return. In many cases, we found the optimizers to be fairly robust to reasonable hyperparameters. For Lion [20], we search over a learning rate range from $3\text{-}10\times$ smaller than Adam and RMSprop as suggested by Chen et al. [20]. For Optim4RL [17], hyperparameter tuning is too expensive; instead, we set learning rate to be $0.1 \times \text{LR}_{\text{Adam}}$ following the heuristic from [20].

For Adam, RMSprop and Lion, we also test whether annealing learning rate from its initial value to 0 over the course of training would improve performance.

A full breakdown of which hyperparameters are tuned, and their value, is shown in the following tables. We use notation and implementations for each optimizer from optax [69].

Table 4: Optimization hyperparameters for MinAtar environments. ‘Range’ covers the range of values used in our hyperparameter tuning.

Optimizer	Hyper Parameter	Environment				Range
		asterix	freeway	breakout	space invaders	
Adam	LR	0.003	0.001	0.01	0.007	{0.001, 0.01}
	β_1	0.9	0.9	0.9	0.9	{0.9, 0.999}
	β_2	0.999	0.99	0.99	0.99	{0.9, 0.999}
	Anneal LR	✓	✓	✓	✓	{✓, X}
RMSprop	LR	0.002	0.001	0.002	0.009	{0.001, 0.01}
	Decay	0.99	0.999	0.99	0.99	{0.9, 0.999}
	Anneal LR	✓	✓	X	✓	{✓, X}
Lion	LR	0.0003	0.0003	0.0008	0.0008	{0.0001, 0.001}
	β_1	0.99	0.9	0.9	0.9	{0.9, 0.999}
	β_2	0.9	0.9	0.9	0.99	{0.9, 0.999}
	Anneal LR	✓	✓	X	✓	{✓, X}
Optim4RL	LR	0.0003	0.0001	0.001	0.0007	{ $0.1 \times \text{LR}_{\text{Adam}}$ }

Table 5: Optimization hyperparameters for Ant. ‘Range’ covers the range of values used in our hyperparameter tuning.

Optimizer	Hyperparameter	Environment	Range
		Ant	
Adam	LR	0.0003	{0.0001, 0.001}
	β_1	0.99	{0.9, 0.999}
	β_2	0.99	{0.9, 0.999}
	Anneal LR	✓	{✓, X}
RMSprop	LR	0.0008	{0.0001, 0.005}
	Decay	0.99	{0.9, 0.999}
	Anneal LR	X	{✓, X}
Lion	LR	0.00015	{0.00001, 0.0005}
	β_1	0.9	{0.9, 0.999}
	β_2	0.9	{0.9, 0.999}
	Anneal LR	✓	{✓, X}
Optim4RL	LR	0.00003	{ $0.1 \times \text{LR}_{\text{Adam}}$ }

Table 6: Optimization hyperparameters for Gridworld. ‘Range’ covers the range of values used in our hyperparameter tuning.

Optimizer	Hyperparameter	Environment	Range
		Gridworld	
Adam	LR	0.0001	{0.00005, 0.001}
	β_1	0.99	{0.9, 0.999}
	β_2	0.99	{0.9, 0.999}
	Anneal LR	✓	{✓, X}

C.3 Craftax-Classic Hyperparameters

For Craftax-Classic (Table C.3), we test 0-shot optimizers using the gridworld hyperparameters to ensure transferring between the settings is as fair as possible. For the finetuned case, we use PPO hyperparameters from [21] which were tuned in domain. Also, for the finetuned case we set β_1 and β_2 values to defaults in optax [69] and tune the learning rate in the range {0.00005, 0.0005}. All optimizers are set to $W = 64$ so as to keep the network size close to, but still out of, distribution.

Table 7: Hyperparameters for Craftax-Classic.

Hyperparameter	OPEN (0-shot)	Adam (0-shot)	Adam (Finetuned)
<i>Learning rate</i>	—	0.0001	0.0005
β_1	—	0.99	0.9
β_2	—	0.99	0.999
<i>Anneal LR</i>	—	✓	✓
<i>Number of Environments N_{envs}</i>	1024	1024	256
<i>Number of Environment Steps N_{steps}</i>	20	20	16
<i>Total Timesteps T</i>	3×10^7	3×10^7	3×10^7
<i>Number of Minibatches $N_{minibatch}$</i>	16	16	8
<i>Number of Epochs L</i>	2	2	4
<i>Discount Factor γ</i>	0.99	0.99	0.99
<i>GAE λ</i>	0.8	0.8	0.8
<i>PPO Clip ϵ</i>	0.2	0.2	0.2
<i>Value Function Coefficient c_1</i>	0.5	0.5	0.5
<i>Entropy Coefficient c_2</i>	0.01	0.01	0.01
<i>Max Gradient Norm</i>	0.5	0.5	0.5
<i>Layer Width W</i>	64	64	64
<i>Number of Hidden Layers H</i>	2	2	2
<i>Activation</i>	tanh	tanh	tanh

C.4 PQN Hyperparameters

For PQN, we use algorithm hyperparameters from [72]. For experiments with Adam, we tune learning rate, β_1 and β_2 and *Anneal LR*.

Table 8: Hyperparameters for PQN in asterix.

Hyperparameter	OPEN	Adam	Tuning Range
<i>Learning rate</i>	—	0.0003	{0.0001, 0.001}
β_1	—	0.99	{0.9, 0.999}
β_2	—	0.999	{0.9, 0.999}
<i>Anneal LR</i>	—	✓	{✓, ✗}
<i>Number of Environments N_{envs}</i>	128	128	
<i>Number of Environment Steps N_{steps}</i>	32	32	
<i>Total Timesteps T</i>	1×10^7	1×10^7	
<i>Number of Minibatches $N_{minibatch}$</i>	32	32	
<i>Number of Epochs L</i>	4	4	
<i>Discount Factor γ</i>	0.99	0.99	
<i>GAE λ</i>	0.65	0.65	
<i>Max Gradient Norm</i>	10	10	
<i>Layer Width W</i>	128	128	
<i>Number of Hidden Layers H</i>	2	2	
<i>Activation</i>	relu	relu	
<i>Normalization</i>	LayerNorm	LayerNorm	

C.5 ES Hyperparameters

Due to the length of meta-optimization, it is not practical to tune hyperparameters for meta-training. We, however, find the following hyperparameters effective and robust for our experiments. We use common hyperparameters when learning OPEN, Optim4RL and *No Features*.

For the single-task and gridworld settings, we train all optimizers for a number of generations after their performance stabilizes, which took different times between optimizers, to ensure each learned optimizer has *reached convergence*; this occasionally means optimizers were trained for different number of generations, but enables efficient use of computational resources by not continuing training far past any performance gains can be realized. For the multi-task setting, due to the extreme cost of training (i.e., having to evaluate sequentially on four MinAtar environments), we train each optimizer

with an equivalent level of compute (i.e., 300 generations) and pick the best performing generation in that period.

We periodically evaluate the learned optimizers during training to find the one which generation performs best on a small *in-distribution* validation set. Table 9 shows roughly how many generations we *trained* each optimizer for, and the generation used at test time, which varied for each environment. We find that in some environments, Optim4RL made no learning progress from the beginning of training, with its performance being practically identical to its initialization.

Table 9: ES hyperparameters for meta-training. For MinAtar, the number of generations corresponds to {Asterix, Breakout, Freeway, SpaceInvaders}. We show the *max generations* for each optimizer (i.e., how long it was trained for), as well as the *generation used* (i.e., which training generation was used at inference time).

Hyperparameter	Environments			
	MinAtar	Ant	Multi-Task	Gridworld
σ_{init}	0.03	0.01	0.03	0.01
σ_{decay}	0.999	0.999	0.998	0.999
<i>Learning Rate</i>	0.03	0.01	0.03	0.005
<i>Learning Rate Decay</i>	0.999	0.999	0.998	0.990
<i>Population Size</i>	64	32	64	64
<i>Number of Rollouts</i>	1	1	1	1
<i>Max Gens (OPEN)</i>	~ {350, 500, 700, 450}	~ 700	300	~ 350
<i>Gen Used (OPEN)</i>	{336, 312, 648, 144}	168	234	333
<i>Max Gens (Optim4RL)</i>	~ {500, 550, 300, 400}	~ 700	300	N/A
<i>Gen Used (Optim4RL)</i>	{288, 552, 216, 24}	480	288	N/A
<i>Max Gens (No Features)</i>	~ {800, 850, 500, 600}	~ 400	300	N/A
<i>Gen Used (No Features)</i>	{456, 816, 408, 264}	240	270	N/A
<i>Evaluation Frequency</i>	24	24	9	9

D Gridworld Details

We train OPEN on gridworlds by sampling environment parameters from a *distribution*. Here, we use a distribution implemented by [66, 32] which is detailed in Table 10. In the codebase of Jackson et al. [66], this is referred to as ‘all’.

Table 10: Distribution parameters for Gridworld. In training, the values for the experienced environment are *sampled* from the value range.

Parameter	Value [range]
<i>Max Steps in Episode</i>	[20, 750]
<i>Object Rewards</i>	[-1.0, 1.0]
<i>Object p(terminate)</i>	[0.01, 1.0]
<i>Object p(respawn)</i>	[0.001, 0.1]
<i>Number of Objects</i>	[1, 6]
<i>Grid Size</i>	[4, 11]
<i>Number of Walls</i>	15

We also evaluate OPEN on three distributions from Oh et al. [13], and three mazes from Chevalier-Boisvert et al. [67], which were not in the distribution of ‘all’. We run all experiments on 64 seeds per gridworld. These are all detailed below, with the mazes also visualized.

Table 11: Distribution parameters for Gridworld. Curly brackets denote a list of the true values, corresponding to each object, used in testing.

Name	Parameter	Values
rand_dense	<i>Max Steps in Episode</i>	500
	<i>Object Rewards</i>	(1.0, 1.0, -1.0, -1.0)
	<i>Object p(terminate)</i>	(0.0, 0.0, 0.5, 0.0)
	<i>Object p(respawn)</i>	(0.05, 0.05, 0.1, 0.5)
	<i>Number of Objects</i>	4
	<i>Grid Size</i>	11
	<i>Number of Walls</i>	0
rand_sparse	<i>Max Steps in Episode</i>	50
	<i>Object Rewards</i>	(-1.0, 1.0)
	<i>Object p(terminate)</i>	(1.0, 1.0)
	<i>Object p(respawn)</i>	(0.0, 0.0)
	<i>Number of Objects</i>	2
	<i>Grid Size</i>	13
rand_long	<i>Max Steps in Episode</i>	1000
	<i>Object Rewards</i>	(1.0, 1.0, -1.0, -1.0)
	<i>Object p(terminate)</i>	(0.0, 0.0, 0.5, 0.5)
	<i>Object p(respawn)</i>	(0.01, 0.01, 1.0, 1.0)
	<i>Number of Objects</i>	4
	<i>Grid Size</i>	11
	<i>Number of Walls</i>	0

Table 12: Distribution parameters for Gridworld. At inference, true values are *sampled* from the given range, such that each seed is evaluated in a slightly different setting.

Name	Parameter	Value
standard_maze	<i>Max Steps in Episode</i>	[25, 50]
	<i>Object Rewards</i>	[0.0, 1.0]
	<i>Object p(terminate)</i>	[0.01, 1.0]
	<i>Object p(respawn)</i>	[0.001, 0.1]
	<i>Number of Objects</i>	3
	<i>Grid Size</i>	13
sixteen_rooms	<i>Max Steps in Episode</i>	[25, 50]
	<i>Object Rewards</i>	[0.0, 1.0]
	<i>Object p(terminate)</i>	[0.01, 1.0]
	<i>Object p(respawn)</i>	[0.001, 0.1]
	<i>Number of Objects</i>	3
	<i>Grid Size</i>	13
labyrinth	<i>Max Steps in Episode</i>	[25, 50]
	<i>Object Rewards</i>	[0.0, 1.0]
	<i>Object p(terminate)</i>	[0.01, 1.0]
	<i>Object p(respawn)</i>	[0.001, 0.1]
	<i>Number of Objects</i>	3
	<i>Grid Size</i>	13

We visualize the three mazes in Figure 10.

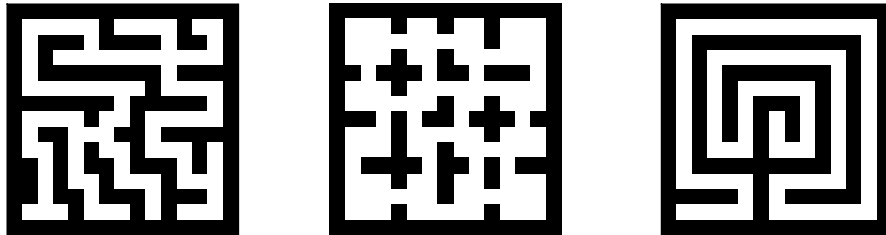


Figure 10: The three mazes from minigrid [67] used for our OOS tests. From left to right, the mazes are: 'standard_maze', 'sixteen_rooms' and 'labyrinth'.

E Single Environment Return Curves

In Figure 11, which shows return curves over training for the five ‘single-task’ environments (section 6), OPEN significantly beats 3 of the 5 baselines, performs similarly to Lion [20] in space invaders and performs comparably to hand-crafted optimizers and ‘No Features’ in ant. OPEN is clearly able to learn strongly performing update rules in a range of single-task settings.

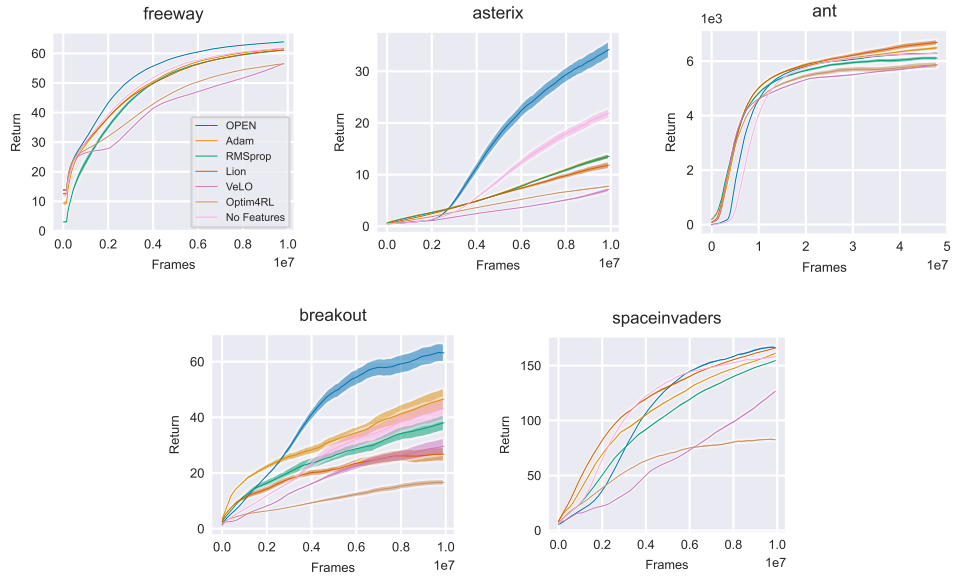


Figure 11: RL training curves comparing our learned optimizers and all other baselines, each trained or tuned on a single environment and evaluated on the same environment. We show mean return over training with standard error, evaluated over 16 seeds.

F Analysis

Throughout this section, we include analysis and figures exploring the behavior of optimizers learned by OPEN. In particular, we consider the behavior of OPEN with regards to dormancy, momentum, update size and stochasticity in different environments. Where relevant, we also make comparisons to the ‘No Features’ optimizer, introduced as a baseline in Section 6, to explore possible differences introduced by the additional elements of OPEN.

Due to the number of moving parts in OPEN, it is difficult to make strong claims regarding the behaviour of the learned optimizers it produces. Instead, we attempt to draw some conclusions based on what we believe the data plots included below suggest, while recognizing that the black-box nature of its update rules, which leads to a lack of interpretability, is a potential drawback of the method in the context of analysis.

All plots included below pertain to the *single task* regime, besides section F.5 which focuses specifically on deep sea.

F.1 Dormancy

Figure 12 shows the $\tau = 0$ dormancy curves during training for each of the MinAtar [62, 63] environments. These environments were selected as the only ones where the agent uses ReLU activation functions; ant [65, 64] used a tanh activation function for which $\tau = 0$ dormancy is not applicable.

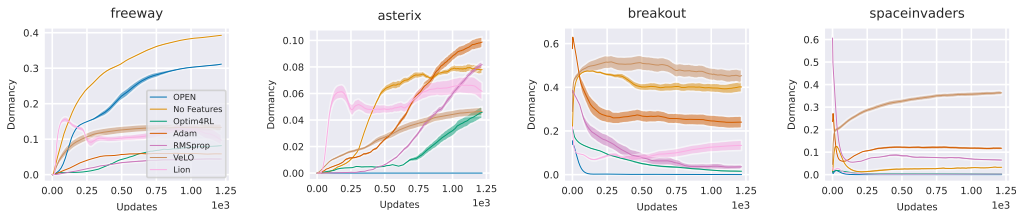


Figure 12: $\tau = 0$ dormancy curves for all optimizers on the four MinAtar environments, evaluated over 16 seeds each. We plot the mean dormancy with standard error.

In all environments excluding freeway, dormancy of *all* agents quickly converged to 0. Additionally, in *every* environment, OPEN produced more plastic (i.e., less dormant) agents than the featureless optimizer. We draw conclusions about this behavior below:

- OPEN optimizes towards *zero* dormancy in a subset of environments, demonstrating it is capable of doing so. The fact that this only held in three out of four environments, despite OPEN outperforming or matching baselines in *every* environment, suggests it optimizes towards zero dormancy only when the agent plasticity is *limiting* performance (i.e., when plasticity loss prevents the agent from improving). Therefore, though a dormancy regularization term in the fitness function for meta-training may have been beneficial for asterix, breakout and spaceinvaders, it is possible that this could harm the performance in freeway and would require expensive hyperparameter tuning of the regularization coefficient to maximize performance. Our meta-learning approach completely sidesteps this problem.
- Despite having the same optimization objective, *No Features* always had higher dormancy than OPEN. In tandem with our ablation from Figure 6, it is likely that the inclusion of each additional feature has given OPEN the capability to minimize plasticity loss.

F.2 Similarity Between Update and Gradient/Momentum

We evaluate the *cosine similarity* between the update from OPEN and ‘No Features’ with momentum over different timescales, and the gradient, in Figure 13. Momentum is calculated as $m^{t+1} = \beta m^t + (1 - \beta)g^t$, where g_t is the gradient at time t . In OPEN, inspired by [24], we input momentum using β s in $[0.1, 0.5, 0.9, 0.99, 0.999, 0.9999]$. For the i th timescale, we denote the momentum as m_i in Figure 13. For the gradient, we include an additional comparison against Adam.

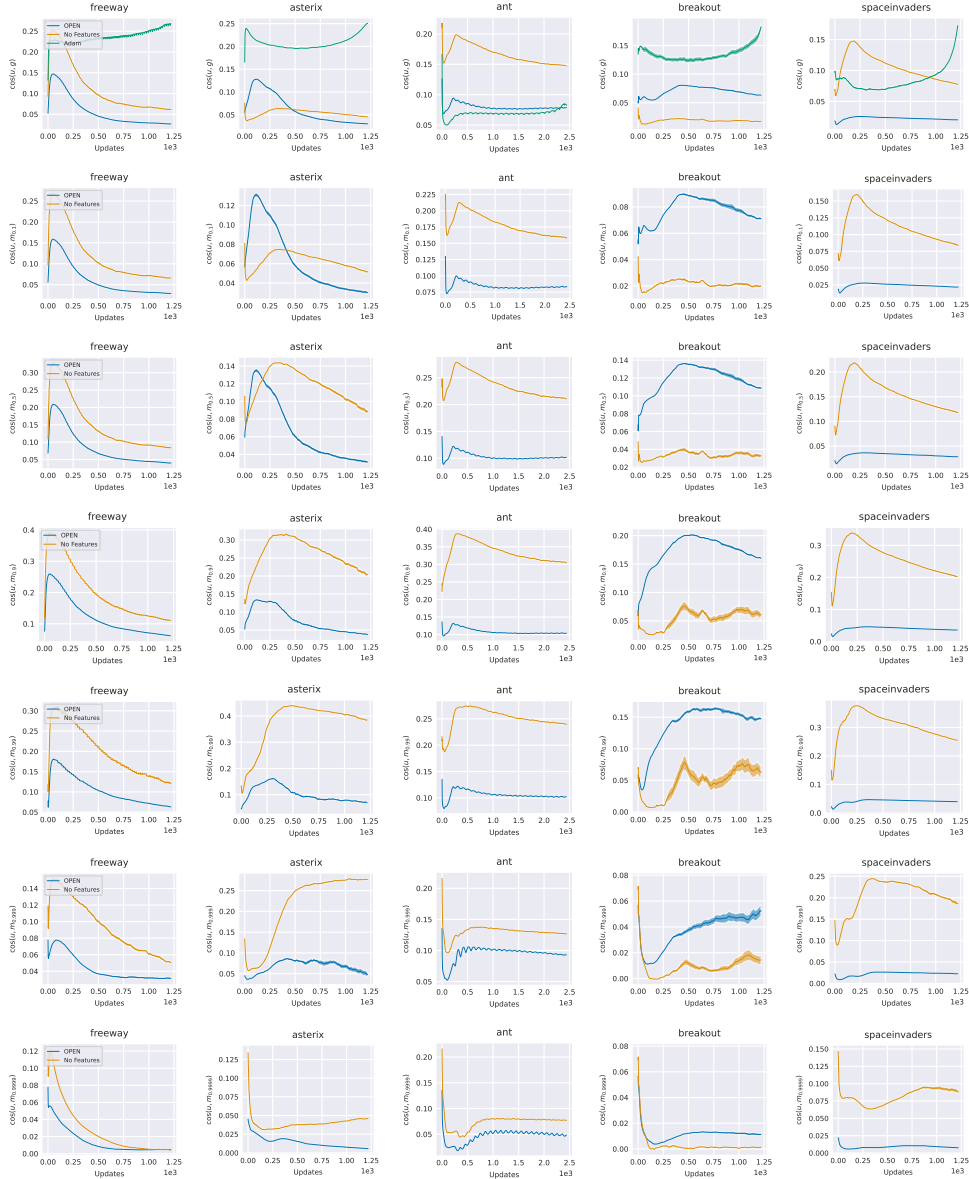


Figure 13: Curves showing the cosine similarity between the updates from OPEN and ‘No Features’ with the gradient or momentum at different β timescales. Each column corresponds to a different environment, and each row to a different timescale. In order, the rows show cosine similarity with gradient, followed by momentum at $\beta = [0.1, 0.5, 0.9, 0.99, 0.999, 0.9999]$. We plot mean cosine similarities with standard error over 16 runs.

From Figure 13, we can conclude that:

- For both OPEN and ‘No Features’, alignment with momentum seems to be maximized at similar (though not always the *same*) timescales as the β_1 values tuned for Adam in Section C.2.
- OPEN and ‘No Features’ rarely had similar cosine similarities. While it is difficult to discern whether this arises as a result of randomness (optimizers trained from a single seed) or something more fundamental, it may demonstrate how the additional elements of OPEN have changed its optimization trajectory.
- For both learned optimizers, cosine similarity with gradient and momentum *generally* peaked and decreased over the training horizon. While OPEN includes lifetime conditioning, which may partially influence this behavior, it is likely that both optimizers rely on their own hidden states, which can be thought of as a learned momentum, more as training progresses.

F.3 Non-Stochastic Update

In the following experiments (i.e., Appendices F.3, F.4, F.5), we find it useful to divide updates by their respective parameter value. Unlike most handcrafted optimizers which produce shrinking updates from an annealed learned rate and generally output parameters with magnitudes close to zero, OPEN generally increases the magnitude of parameters over training with roughly constant update magnitudes. As such, normalizing updates with respect to the parameter value shows the relative effect (i.e., change) when an update is applied. In all cases, we plot the average absolute normalized value over time.

In Figure 14, we explore how the magnitude of the non-stochastic update changes over time (i.e., the update before any learned stochasticity is applied, defined as $\hat{u}_i = \alpha_1 m_i \exp \alpha_2 e_i$). This is normalized with respect to the parameter value, and so is calculated $|\hat{u}/p| = \mathbb{E}_i \left[\left| \frac{\hat{u}_i}{p_i} \right| \right]$.

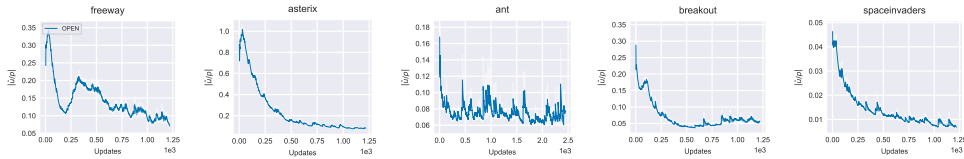


Figure 14: Plots of the average normalized, non-stochastic update magnitude with respect to time, with standard error over 16 seeds.

We find that optimizers learned with OPEN all anneal their step sizes. In particular, the relative size of the update with respect to the parameter size decreases over time, with final updates generally being much smaller than at the beginning of training. This holds in all environments, though was weaker in ant which had significantly smaller updates from the start. Interestingly, for all handcrafted optimizers, hyperparameter tuning also consistently produces smaller learning rates for ant.

F.4 Stochasticity

Figure 15 explores how the weight of the learned stochasticity, δ_i^{actor} , changes with respect to time. This stochasticity is incorporated into the update rules as $\hat{u}_i^{\text{actor}} = \hat{u}_i^{\text{actor}} + \alpha_3 \delta_i^{\text{actor}} \epsilon$, with $\epsilon \sim \mathcal{N}(0, 1)$. As in the previous plot, this is normalized with respect to the parameter value, and is calculated as $\text{randomness}/p = \mathbb{E}_i \left[\left| \frac{\delta_i^{\text{actor}}}{p_i^{\text{actor}}} \right| \right]$

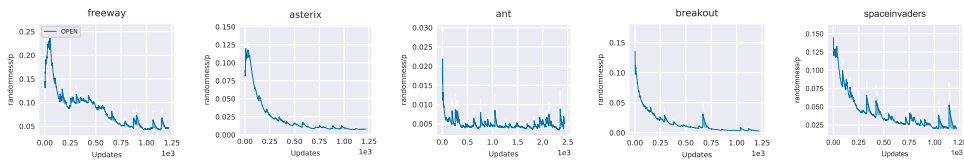


Figure 15: Plots of the normalized stochasticity weight with respect to time. We plot mean values with standard error over 16 seeds.

As expected, this decreases significantly over time, suggesting the optimizer promotes less exploration over time. This makes sense; it is beneficial to explore early in training, when there is time to continue searching for better local or global optima, but later in training it is important to converge to the nearest optimum.

We also note the significantly different scales of noise which are applied to different environments. In particular, ant uses very small noise, suggesting it is not an environment which needs a significant amount of exploration. This may be one reason why OPEN performed similarly to handcrafted optimizers, and ‘No Features’.

F.5 Deepsea

Finally, we consider how the randomness used by OPEN changes during training in environments of different sizes from Deep sea [71, 63]. This randomness was shown to be crucial for learning in larger environments in Section 7.2. To analyze this, we consider 5 different sizes (10, 20, 30, 40, 50), with the size corresponding to how many ‘rights’ the agent has to take in a row to receive a large reward. We look at $\text{randomness}/p = \mathbb{E}_i \left[\left| \frac{\delta_i^{actor}}{p_i^{actor}} \right| \right]$, as in Appendix F.4.

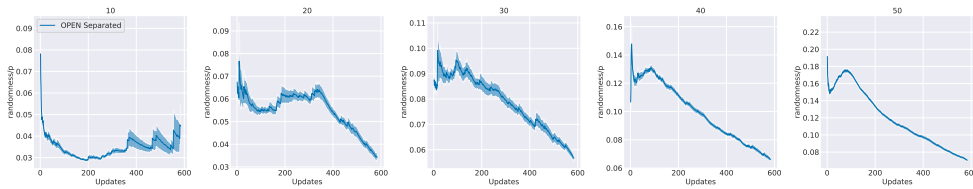


Figure 16: Mean normalized randomness applied by OPEN for different sized Deep Sea environments, over 128 seeds, with standard error. Notably, the scale for larger environments is bigger, such that OPEN applies *more* noise (i.e., more exploration) in larger environments despite having no awareness of the environment size.

We focus on two behaviors of the optimizer. Firstly, the applied randomness progressively decreases over training, reducing the exploration as the agent converges. This follows similar behavior to figure 15, where the level of randomness decreases during the training horizon. Secondly, the amount of noise seems to grow with the environment size; the optimizer promotes more exploration in larger environments, despite lacking any awareness about the environment size. The combination of these two elements allows the agent to *explore* sufficiently in larger environments, while converging to good, close to optimal policies towards the end of training.

G Multi Environment Return Curves

Figure 17 shows return curves the four MinAtar [62] environments included in ‘multi-task’ training (Section 6). As expected, the method of normalization used in training (i.e., dividing scores in each environment by scores achieved by Adam and averaging across environments) leads OPEN, and the other learned optimizers, to principally focus on those which they can strongly outperform Adam in. In particular, OPEN marginally underperforms Adam and other handcrafted optimizers in freeway and spaceinvaders. However, its score in asterix, which is approximately double Adam’s, will outweigh these other environments. We leave finding better methods for multi-task training, such as using more principled curricula to normalize between environments, to future work. However, we still note that this demonstrates that OPEN is capable of learning highly expressive update rules which can fit to many different contexts; it performs comparably to handcrafted optimizers in two environments and significantly outperforms them in two others, in addition to consistently matching or beating the other learned baselines.

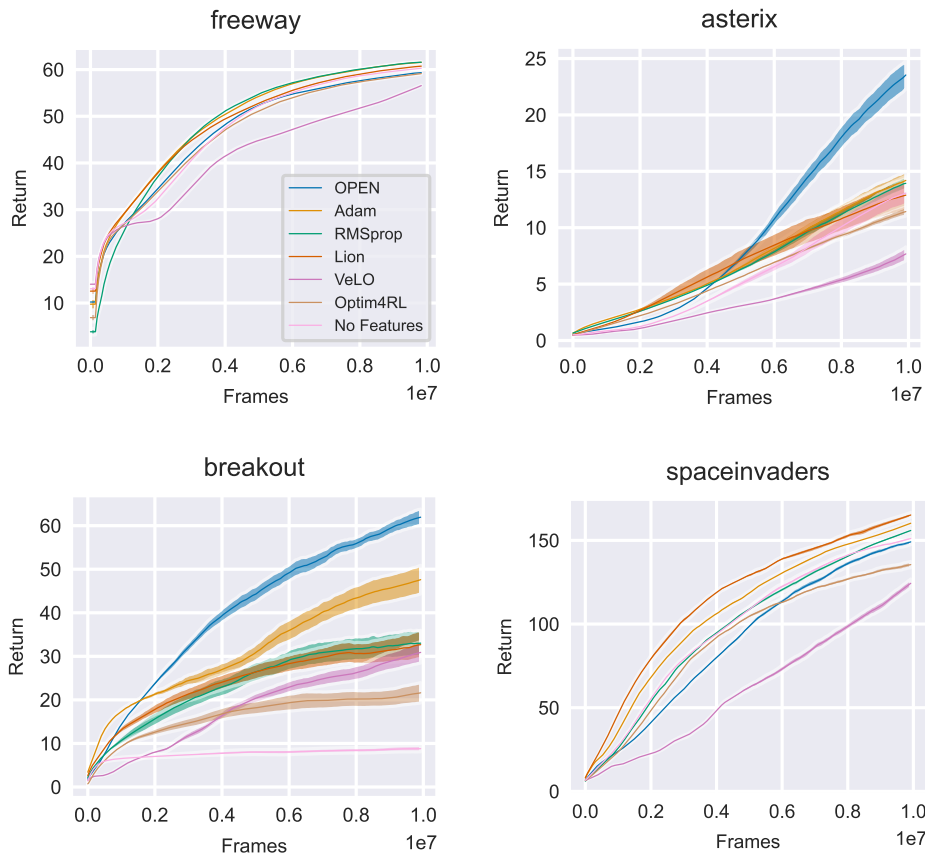


Figure 17: RL training curves for the multi-task setting. We show mean return over training with standard error, evaluated over 16 seeds.

H Additional Gridworld Experiments

Similar to Figure 4, which looked at how OPEN generalized to different agent sizes, we consider how OPEN adapts to different training lengths in Figure 18. In particular, we note that OPEN was only ever trained for gridworlds (‘all’, Appendix D) which ran for $3e7$ training steps, so all lengths outside of this are OOS tasks. We also consider that in E, the return of OPEN often started *lower* than other optimizers and increased only later in training. As such, the lifetime conditioning (i.e., training proportion) of OPEN needs to be leveraged to be able to perform well at *shorter* training lengths. If OPEN did not make use of this feature, it may end training without having converged to the nearby optima, instead focusing on exploration.

We find that OPEN is able to beat Adam in all of the grids considered at the *in-distribution* training length. For OOS training lengths, OPEN generalizes better than Adam, and only in a couple of environments (rand_dense, standard_maze) does it not outperform Adam in the shortest training length. For every other training length, OPEN performs better than Adam in *every* environment, further demonstrating its capability to generalize to OOS environments and training settings.

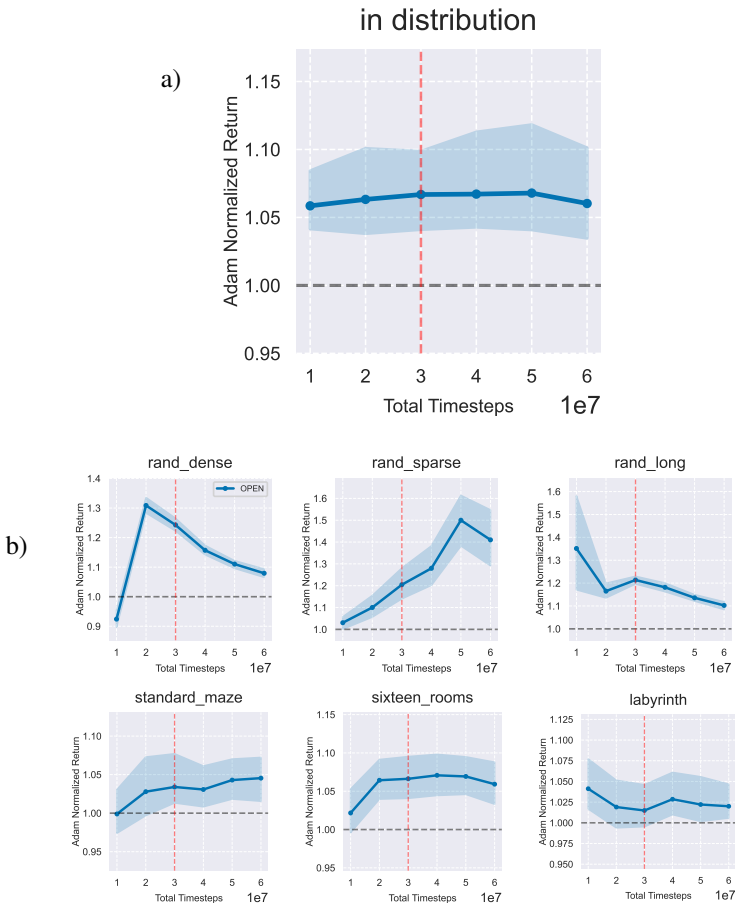


Figure 18: IQM of return achieved by OPEN, normalized by the return of Adam, against a range of different training lengths with 95% stratified bootstrap confidence intervals for 64 seeds. a) shows performance on the distribution which OPEN was trained on, and Adam was tuned in. b) shows performance on OOS gridworlds, with the top row coming from [13] and the bottom row inspired by mazes from [67], all implemented by [66]. We mark $3e7$ timesteps as the in-distribution training length for both OPEN and Adam.

I Ablation Details

I.1 Feature Ablation Setup

We train 17 optimizers for each feature ablation, and evaluate performance on 64 seeds per optimizer, using a shortened version of Breakout. We use the same PPO hyperparameters for Breakout as in Table 3 besides the total timesteps T , which we shorten to 2×10^5 . Each optimizer takes ~ 60 minutes to train on one GPU, and we train a total of 119 optimizers.

We train each optimizer for 250 generations, keeping all other MinAtar ES hyperparameters from Table 9.

I.2 Deep Sea Expanded Curve

We show the final return against size for the Deep Sea environment [71, 63] in Figure 16 for all optimizers; both shared and separated, with stochasticity and without. The one without can be thought of as a *deterministic optimizer*, and is denoted ‘ablated’ in the figure. For this experiment, we trained each optimizer for only 48 iterations on sizes in the range [4, 26]; any sizes outside of this range at test time are out of support of the training distribution.

Clearly the separated optimizer with learned stochasticity is the only one which is able to generalize across many different sizes of Deep Sea. This occurs marginally at the behest of optimization in smaller environments, where the stochastic optimizer still explores after obtaining reward and so does not consistently reach maximum performance. In Deep Sea, the final return scale is between 0.99 and -0.01 .

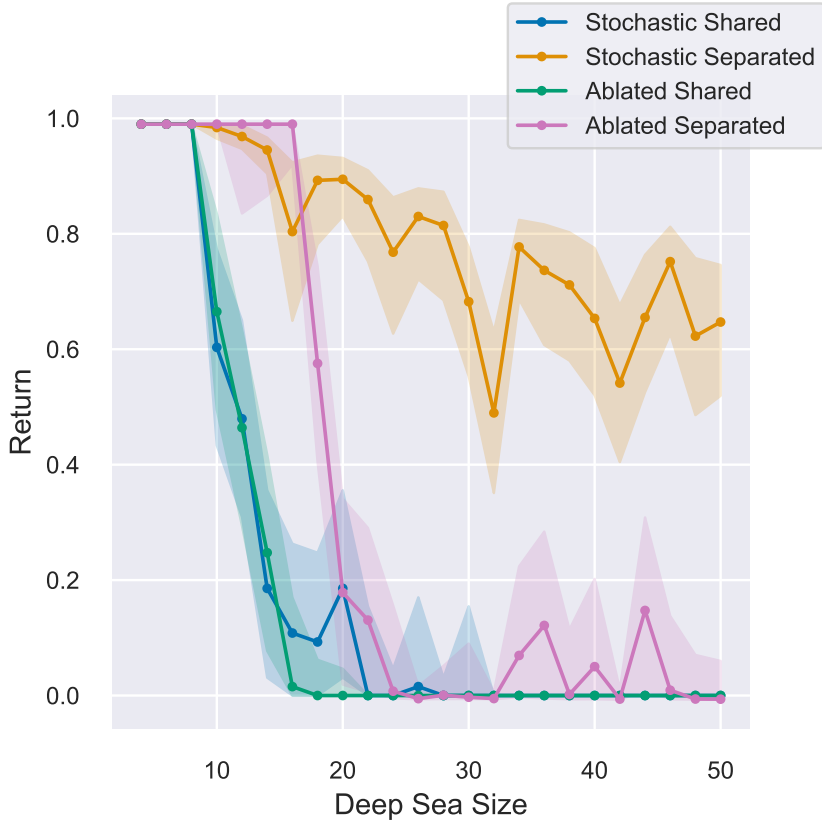


Figure 19: IQM of return against size of environment in Deep Sea, with stratified bootstrap 95% confidence intervals for 128 random seeds. The only optimizer which is able to generalize has separate parameters between the actor and critic and incorporates *learned stochasticity* into its update.

I.3 PQN Return Curve

Figure 20 shows the performance of OPEN and Adam when training a PQN agent [72] in Asterix [62, 63]. While OPEN outperforms Adam in this setting, we note that it exhibits similar behavior to the other return curves (Appendix E, G) in having much lower return at the beginning of training before overtaking Adam at the end of training. As discussed in section 6.2, this suggests that OPEN sacrifices greedy optimization in favor of long-term performance.

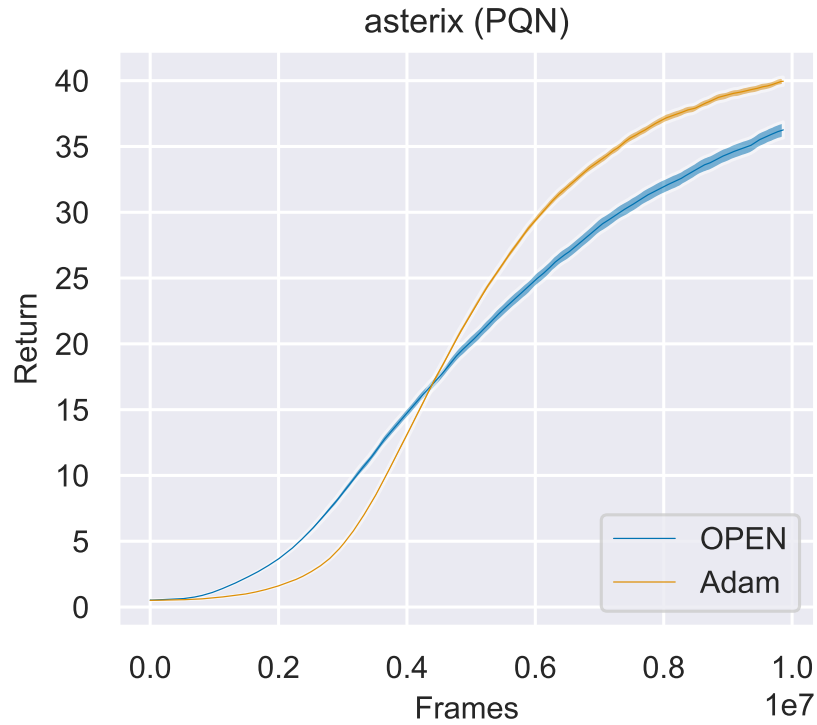


Figure 20: Training curves for PQN when optimised by OPEN and Adam in asterix. We show mean return with standard error, over 64 seeds.

J Experimental Compute

J.1 Runtimes

We include runtimes (inference) for our experiments with the different optimizers on $4 \times$ L40s GPUs. We note that, while OPEN takes longer to run compared to handcrafted optimizers, it offers significant speedup over VeLO and takes a similar runtime as Optim4RL and No Features in addition to significantly stronger performance. Importantly, this suggests the additional computation used in OPEN to calculate features, such as dormancy, does not translate to significant overhead compared to other learned optimizers.

Table 13: Runtime for each optimizer. We evaluate each over 16 seeds, on 4 L40s GPUs. These take advantage of Jax’s ability to parallelize over multiple GPUs [33].

Optimizer	RunTime (s)				
	freeway	breakout	spaceinvaders	asterix	ant
OPEN (<i>single-task</i>)	138	87	94	137	453
OPEN (<i>multi-task</i>)	154	98	109	148	N/A
Adam	91	53	58	105	333
RMSprop	84	38	52	97	322
Lion	83	44	50	96	303
VeLO	190	135	145	185	581
Optim4RL (<i>single-task</i>)	127	85	90	131	404
Optim4RL (<i>multi-task</i>)	168	99	116	157	N/A
No Features (<i>single-task</i>)	123	79	88	132	416
No Features (<i>multi-task</i>)	154	93	106	147	N/A

J.2 Training Compute

We used a range of hardware for training: Nvidia A40s, Nvidia L40ses, Nvidia GeForce GTX 1080Tis, Nvidia GeForce RTX 2080Tis and Nvidia GeForce RTX 3080s. These are all part of an internal cluster. Whilst this makes it difficult to directly compare meta-training times per-experiment, we find training took roughly between $\sim [16, 32]$ GPU days of compute per optimizer in the single-task setting, and ~ 60 GPU days of compute for multi-task training.

J.3 Total Compute

For all of our hyperparameter tuning experiments, we used a total of ~ 16 GPU days of compute, using Nvidia A40 GPUs.

For each learned optimizer in our single-task experiments, we used approximately $\sim [16, 32]$ GPU days of compute. This equates to around 1 GPU year of compute for 3 learned optimizers on 5 environments (=15 optimizers total). This was run principally on Nvidia GeForce GTX 1080Tis, Nvidia GeForce RTX 2080Tis and Nvidia GeForce RTX 3080s.

For each multi-task optimizer, we used around 60 GPU days of compute, on Nvidia GeForce RTX 2080Tis. This totals 180 GPU days of compute. We also ran experiments for each optimizer with the smaller architecture, which took a similar length of time. These are not included in the paper; in total multi-task training used another 1 GPU year of compute, taking into account the omitted results.

To train on a distribution of gridworlds, we used 7 GPU days of compute on Nvidia GeForce RTX 2080 Tis.

Our ablation study used ~ 8 GPU days of compute, running on Nvidia A40 GPUs.

Each optimizer took 2 days to train in deep sea on an Nvidia A40 GPU. In total, this section of the ablation study took 8 GPU days.

As stated in Table 13, inference was a negligible cost (on the order of seconds) in this paper.

Totaling the above, all experiments in this paper used approximately **2.1 GPU years** to run, though it is difficult to aggregate results properly due to the variety of hardware used.

We ran a number of preliminary experiments to guide the design of OPEN, though these are not included in the final manuscript. We are unable to quantify how much compute was used to this end. Due to the excessive cost of learned optimization, we ran only one run for each setting and optimizer (besides the multi-task setting, where we tested both small and large architectures and found that the larger architectures performed best for every optimizer on average). After converging upon our method, and finishing the implementations of Optim4RL and *No Features*, we did not have any failed runs and so included all experiments in the paper.

K Code Repositories and Asset Licenses

Below we include a full list of assets used in this paper, in addition to the license under which it was made available.

Table 14: Main libraries used in this paper, links to the github repository at which they can be found and the license under which they are released.

Name	Link	License
evosax [34]	evosax	Apache-2.0
gymnax [63]	gymnax	Apache-2.0
brax [64]	brax	Apache-2.0
learned_optimization [45]	learned_optimization	Apache-2.0
groove (gridworlds) [66]	groove	Apache-2.0
purejaxrl [15]	purejaxrl	Apache-2.0
optax [69]	optax	Apache-2.0
rliable [70]	rliable	Apache-2.0
craftax [21]	craftax	MIT
purejaxql (PQN) [72]	purejaxql	Apache-2.0

NeurIPS Paper Checklist

1. Claims

Question: Do the main claims made in the abstract and introduction accurately reflect the paper's contributions and scope?

Answer: [Yes]

Justification: We make claims regarding the performance of our learned optimizers for RL, and the means by which these performance gains are realized. These are justified by empirical results in a range of environments (Section 6, Appendices E, G, H), including three extensive different ablations (Section 7).

Guidelines:

- The answer NA means that the abstract and introduction do not include the claims made in the paper.
- The abstract and/or introduction should clearly state the claims made, including the contributions made in the paper and important assumptions and limitations. A No or NA answer to this question will not be perceived well by the reviewers.
- The claims made should match theoretical and experimental results, and reflect how much the results can be expected to generalize to other settings.
- It is fine to include aspirational goals as motivation as long as it is clear that these goals are not attained by the paper.

2. Limitations

Question: Does the paper discuss the limitations of the work performed by the authors?

Answer: [Yes]

Justification: We discuss limitations of this work thus far with respect to curricula used in multi-task settings, and discuss potential avenues for future work in this regard or in terms of considering other areas of RL which this method could be applied to. This is included in Section 8.

Guidelines:

- The answer NA means that the paper has no limitation while the answer No means that the paper has limitations, but those are not discussed in the paper.
- The authors are encouraged to create a separate "Limitations" section in their paper.
- The paper should point out any strong assumptions and how robust the results are to violations of these assumptions (e.g., independence assumptions, noiseless settings, model well-specification, asymptotic approximations only holding locally). The authors should reflect on how these assumptions might be violated in practice and what the implications would be.
- The authors should reflect on the scope of the claims made, e.g., if the approach was only tested on a few datasets or with a few runs. In general, empirical results often depend on implicit assumptions, which should be articulated.
- The authors should reflect on the factors that influence the performance of the approach. For example, a facial recognition algorithm may perform poorly when image resolution is low or images are taken in low lighting. Or a speech-to-text system might not be used reliably to provide closed captions for online lectures because it fails to handle technical jargon.
- The authors should discuss the computational efficiency of the proposed algorithms and how they scale with dataset size.
- If applicable, the authors should discuss possible limitations of their approach to address problems of privacy and fairness.
- While the authors might fear that complete honesty about limitations might be used by reviewers as grounds for rejection, a worse outcome might be that reviewers discover limitations that aren't acknowledged in the paper. The authors should use their best judgment and recognize that individual actions in favor of transparency play an important role in developing norms that preserve the integrity of the community. Reviewers will be specifically instructed to not penalize honesty concerning limitations.

3. Theory Assumptions and Proofs

Question: For each theoretical result, does the paper provide the full set of assumptions and a complete (and correct) proof?

Answer: [NA]

Justification: We do not make theoretical claims as this is a purely empirical paper. This is made clear in the paper.

Guidelines:

- The answer NA means that the paper does not include theoretical results.
- All the theorems, formulas, and proofs in the paper should be numbered and cross-referenced.
- All assumptions should be clearly stated or referenced in the statement of any theorems.
- The proofs can either appear in the main paper or the supplemental material, but if they appear in the supplemental material, the authors are encouraged to provide a short proof sketch to provide intuition.
- Inversely, any informal proof provided in the core of the paper should be complemented by formal proofs provided in appendix or supplemental material.
- Theorems and Lemmas that the proof relies upon should be properly referenced.

4. Experimental Result Reproducibility

Question: Does the paper fully disclose all the information needed to reproduce the main experimental results of the paper to the extent that it affects the main claims and/or conclusions of the paper (regardless of whether the code and data are provided or not)?

Answer: [Yes]

Justification: We give full details of our method, including mathematical expressions for all inputs to the optimizer (Appendix B), the architecture used (Appendices B.4, B.5) and how it was trained (5.2). This was all detailed in the main body of the paper, in Section 5. We provide a full algorithm in Appendix B.1 which can be used to completely replicate the results of the paper.

Guidelines:

- The answer NA means that the paper does not include experiments.
- If the paper includes experiments, a No answer to this question will not be perceived well by the reviewers: Making the paper reproducible is important, regardless of whether the code and data are provided or not.
- If the contribution is a dataset and/or model, the authors should describe the steps taken to make their results reproducible or verifiable.
- Depending on the contribution, reproducibility can be accomplished in various ways. For example, if the contribution is a novel architecture, describing the architecture fully might suffice, or if the contribution is a specific model and empirical evaluation, it may be necessary to either make it possible for others to replicate the model with the same dataset, or provide access to the model. In general, releasing code and data is often one good way to accomplish this, but reproducibility can also be provided via detailed instructions for how to replicate the results, access to a hosted model (e.g., in the case of a large language model), releasing of a model checkpoint, or other means that are appropriate to the research performed.
- While NeurIPS does not require releasing code, the conference does require all submissions to provide some reasonable avenue for reproducibility, which may depend on the nature of the contribution. For example
 - (a) If the contribution is primarily a new algorithm, the paper should make it clear how to reproduce that algorithm.
 - (b) If the contribution is primarily a new model architecture, the paper should describe the architecture clearly and fully.
 - (c) If the contribution is a new model (e.g., a large language model), then there should either be a way to access this model for reproducing the results or a way to reproduce the model (e.g., with an open-source dataset or instructions for how to construct the dataset).

- (d) We recognize that reproducibility may be tricky in some cases, in which case authors are welcome to describe the particular way they provide for reproducibility. In the case of closed-source models, it may be that access to the model is limited in some way (e.g., to registered users), but it should be possible for other researchers to have some path to reproducing or verifying the results.

5. Open access to data and code

Question: Does the paper provide open access to the data and code, with sufficient instructions to faithfully reproduce the main experimental results, as described in supplemental material?

Answer: [Yes]

Justification: We release all code used for OPEN in a publicly available repository.

Guidelines:

- The answer NA means that paper does not include experiments requiring code.
- Please see the NeurIPS code and data submission guidelines (<https://nips.cc/public/guides/CodeSubmissionPolicy>) for more details.
- While we encourage the release of code and data, we understand that this might not be possible, so “No” is an acceptable answer. Papers cannot be rejected simply for not including code, unless this is central to the contribution (e.g., for a new open-source benchmark).
- The instructions should contain the exact command and environment needed to run to reproduce the results. See the NeurIPS code and data submission guidelines (<https://nips.cc/public/guides/CodeSubmissionPolicy>) for more details.
- The authors should provide instructions on data access and preparation, including how to access the raw data, preprocessed data, intermediate data, and generated data, etc.
- The authors should provide scripts to reproduce all experimental results for the new proposed method and baselines. If only a subset of experiments are reproducible, they should state which ones are omitted from the script and why.
- At submission time, to preserve anonymity, the authors should release anonymized versions (if applicable).
- Providing as much information as possible in supplemental material (appended to the paper) is recommended, but including URLs to data and code is permitted.

6. Experimental Setting/Details

Question: Does the paper specify all the training and test details (e.g., data splits, hyperparameters, how they were chosen, type of optimizer, etc.) necessary to understand the results?

Answer: [Yes]

Justification: We give moderate detail of the setup for training and testing in our results (Section 6) and ablation (Section 7). We go into significantly more detail of the hyperparameters in Appendix C, and the architectures used in B. We include details for our gridworld experiment in Appendix D.

Guidelines:

- The answer NA means that the paper does not include experiments.
- The experimental setting should be presented in the core of the paper to a level of detail that is necessary to appreciate the results and make sense of them.
- The full details can be provided either with the code, in appendix, or as supplemental material.

7. Experiment Statistical Significance

Question: Does the paper report error bars suitably and correctly defined or other appropriate information about the statistical significance of the experiments?

Answer: [Yes]

Justification: For all experiments in the main body of the paper, we report 95% stratified bootstrap confidence intervals, using the implementation of `rliable` by Agarwal et al. [70]. For return curves in Appendices E and G, in addition to our analysis F, we make it clear that we plot standard error. We discuss that all error bars are for a *single* learned optimizer, due to the extreme cost of learned optimization, and cover multiple runs with the same optimizer. We discuss that other works use the same evaluation protocol [16, 17, 47].

Guidelines:

- The answer NA means that the paper does not include experiments.
- The authors should answer "Yes" if the results are accompanied by error bars, confidence intervals, or statistical significance tests, at least for the experiments that support the main claims of the paper.
- The factors of variability that the error bars are capturing should be clearly stated (for example, train/test split, initialization, random drawing of some parameter, or overall run with given experimental conditions).
- The method for calculating the error bars should be explained (closed form formula, call to a library function, bootstrap, etc.)
- The assumptions made should be given (e.g., Normally distributed errors).
- It should be clear whether the error bar is the standard deviation or the standard error of the mean.
- It is OK to report 1-sigma error bars, but one should state it. The authors should preferably report a 2-sigma error bar than state that they have a 96% CI, if the hypothesis of Normality of errors is not verified.
- For asymmetric distributions, the authors should be careful not to show in tables or figures symmetric error bars that would yield results that are out of range (e.g. negative error rates).
- If error bars are reported in tables or plots, The authors should explain in the text how they were calculated and reference the corresponding figures or tables in the text.

8. Experiments Compute Resources

Question: For each experiment, does the paper provide sufficient information on the computer resources (type of compute workers, memory, time of execution) needed to reproduce the experiments?

Answer: [Yes]

Justification: In Appendix J, we estimate how much compute was required per learned optimizer, how much compute was used for hyperparameter tuning and roughly how much compute the project used in total. We also detail that additional compute was used in the preliminary design of our method. We give a full breakdown of what hardware was used for experiments.

Guidelines:

- The answer NA means that the paper does not include experiments.
- The paper should indicate the type of compute workers CPU or GPU, internal cluster, or cloud provider, including relevant memory and storage.
- The paper should provide the amount of compute required for each of the individual experimental runs as well as estimate the total compute.
- The paper should disclose whether the full research project required more compute than the experiments reported in the paper (e.g., preliminary or failed experiments that didn't make it into the paper).

9. Code Of Ethics

Question: Does the research conducted in the paper conform, in every respect, with the NeurIPS Code of Ethics <https://neurips.cc/public/EthicsGuidelines?>

Answer: [Yes]

Justification: This paper does not violate any part of the NeurIPS Code of Ethics; there are no potential harms caused by our research process, nor are there any potential societal consequences.

Guidelines:

- The answer NA means that the authors have not reviewed the NeurIPS Code of Ethics.
- If the authors answer No, they should explain the special circumstances that require a deviation from the Code of Ethics.
- The authors should make sure to preserve anonymity (e.g., if there is a special consideration due to laws or regulations in their jurisdiction).

10. **Broader Impacts**

Question: Does the paper discuss both potential positive societal impacts and negative societal impacts of the work performed?

Answer: [NA]

Justification: As a foundational piece of research, this work has no direct paths to negative societal impacts besides that which can arise from improved reinforcement learning systems, or improved machine learning systems more generally. We briefly discuss the general potential positive impacts of effective reinforcement learning systems in our introduction (Section 1).

Guidelines:

- The answer NA means that there is no societal impact of the work performed.
- If the authors answer NA or No, they should explain why their work has no societal impact or why the paper does not address societal impact.
- Examples of negative societal impacts include potential malicious or unintended uses (e.g., disinformation, generating fake profiles, surveillance), fairness considerations (e.g., deployment of technologies that could make decisions that unfairly impact specific groups), privacy considerations, and security considerations.
- The conference expects that many papers will be foundational research and not tied to particular applications, let alone deployments. However, if there is a direct path to any negative applications, the authors should point it out. For example, it is legitimate to point out that an improvement in the quality of generative models could be used to generate deepfakes for disinformation. On the other hand, it is not needed to point out that a generic algorithm for optimizing neural networks could enable people to train models that generate Deepfakes faster.
- The authors should consider possible harms that could arise when the technology is being used as intended and functioning correctly, harms that could arise when the technology is being used as intended but gives incorrect results, and harms following from (intentional or unintentional) misuse of the technology.
- If there are negative societal impacts, the authors could also discuss possible mitigation strategies (e.g., gated release of models, providing defenses in addition to attacks, mechanisms for monitoring misuse, mechanisms to monitor how a system learns from feedback over time, improving the efficiency and accessibility of ML).

11. **Safeguards**

Question: Does the paper describe safeguards that have been put in place for responsible release of data or models that have a high risk for misuse (e.g., pretrained language models, image generators, or scraped datasets)?

Answer: [NA]

Justification: We do not believe that OPEN has any potential for misuse, and so there is no need to describe safeguards for the models.

Guidelines:

- The answer NA means that the paper poses no such risks.
- Released models that have a high risk for misuse or dual-use should be released with necessary safeguards to allow for controlled use of the model, for example by requiring that users adhere to usage guidelines or restrictions to access the model or implementing safety filters.
- Datasets that have been scraped from the Internet could pose safety risks. The authors should describe how they avoided releasing unsafe images.

- We recognize that providing effective safeguards is challenging, and many papers do not require this, but we encourage authors to take this into account and make a best faith effort.

12. Licenses for existing assets

Question: Are the creators or original owners of assets (e.g., code, data, models), used in the paper, properly credited and are the license and terms of use explicitly mentioned and properly respected?

Answer: [Yes]

Justification: We take care to cite every environment used throughout the paper, with due care for who created the original environment in addition to who implemented the Jax-based version we used. We build our code upon the library from [45], and are clear to mention this in appendix K. All licenses can be found at the relevant citation, and are included in Appendix K.

Guidelines:

- The answer NA means that the paper does not use existing assets.
- The authors should cite the original paper that produced the code package or dataset.
- The authors should state which version of the asset is used and, if possible, include a URL.
- The name of the license (e.g., CC-BY 4.0) should be included for each asset.
- For scraped data from a particular source (e.g., website), the copyright and terms of service of that source should be provided.
- If assets are released, the license, copyright information, and terms of use in the package should be provided. For popular datasets, paperswithcode.com/datasets has curated licenses for some datasets. Their licensing guide can help determine the license of a dataset.
- For existing datasets that are re-packaged, both the original license and the license of the derived asset (if it has changed) should be provided.
- If this information is not available online, the authors are encouraged to reach out to the asset's creators.

13. New Assets

Question: Are new assets introduced in the paper well documented and is the documentation provided alongside the assets?

Answer: [Yes]

Justification: We provide an anonymous link to the code and models used in this paper here and in appendix K.

Guidelines:

- The answer NA means that the paper does not release new assets.
- Researchers should communicate the details of the dataset/code/model as part of their submissions via structured templates. This includes details about training, license, limitations, etc.
- The paper should discuss whether and how consent was obtained from people whose asset is used.
- At submission time, remember to anonymize your assets (if applicable). You can either create an anonymized URL or include an anonymized zip file.

14. Crowdsourcing and Research with Human Subjects

Question: For crowdsourcing experiments and research with human subjects, does the paper include the full text of instructions given to participants and screenshots, if applicable, as well as details about compensation (if any)?

Answer: [NA]

Justification: This paper does not use crowdsourcing experiments, nor does it use experiments with human subjects.

Guidelines:

- The answer NA means that the paper does not involve crowdsourcing nor research with human subjects.
- Including this information in the supplemental material is fine, but if the main contribution of the paper involves human subjects, then as much detail as possible should be included in the main paper.
- According to the NeurIPS Code of Ethics, workers involved in data collection, curation, or other labor should be paid at least the minimum wage in the country of the data collector.

15. **Institutional Review Board (IRB) Approvals or Equivalent for Research with Human Subjects**

Question: Does the paper describe potential risks incurred by study participants, whether such risks were disclosed to the subjects, and whether Institutional Review Board (IRB) approvals (or an equivalent approval/review based on the requirements of your country or institution) were obtained?

Answer: [NA]

Justification: This paper does not use crowdsourcing experiments, nor does it use experiments with human subjects.

Guidelines:

- The answer NA means that the paper does not involve crowdsourcing nor research with human subjects.
- Depending on the country in which research is conducted, IRB approval (or equivalent) may be required for any human subjects research. If you obtained IRB approval, you should clearly state this in the paper.
- We recognize that the procedures for this may vary significantly between institutions and locations, and we expect authors to adhere to the NeurIPS Code of Ethics and the guidelines for their institution.
- For initial submissions, do not include any information that would break anonymity (if applicable), such as the institution conducting the review.