
Deep Evidential Regression

Alexander Amini¹, Wilko Schwarting¹, Ava Soleimany², Daniela Rus¹

¹ Computer Science and Artificial Intelligence Lab (CSAIL),
Massachusetts Institute of Technology (MIT)

² Harvard Graduate Program in Biophysics

Abstract

Deterministic neural networks (NNs) are increasingly being deployed in safety critical domains, where calibrated, robust, and efficient measures of uncertainty are crucial. In this paper, we propose a novel method for training non-Bayesian NNs to estimate a continuous target as well as its associated evidence in order to learn both aleatoric and epistemic uncertainty. We accomplish this by placing evidential priors over the original Gaussian likelihood function and training the NN to infer the hyperparameters of the evidential distribution. We additionally impose priors during training such that the model is regularized when its predicted evidence is not aligned with the correct output. Our method does not rely on sampling during inference or on out-of-distribution (OOD) examples for training, thus enabling efficient and scalable uncertainty learning. We demonstrate learning well-calibrated measures of uncertainty on various benchmarks, scaling to complex computer vision tasks, as well as robustness to adversarial and OOD test samples.

1 Introduction

Regression-based neural networks (NNs) are being deployed in safety critical domains in computer vision [15] as well as in robotics and control [1, 6], where the ability to infer model uncertainty is crucial for eventual wide-scale adoption. Furthermore, precise and calibrated uncertainty estimates are useful for interpreting confidence, capturing domain shift of out-of-distribution (OOD) test samples, and recognizing when the model is likely to fail.

There are two axes of NN uncertainty that can be modeled: (1) uncertainty in the data, called aleatoric uncertainty, and (2) uncertainty in the prediction, called epistemic uncertainty. While representations of aleatoric uncertainty can be learned directly from data, there exist several approaches for estimating epistemic uncertainty, such as Bayesian NNs, which place probabilistic priors over network weights and use sampling to approximate output variance [25]. However, Bayesian NNs face several limitations, including the intractability of directly inferring the posterior distribution of the weights given data, the requirement and computational expense of sampling during inference, and the question of how to choose a weight prior.

In contrast, evidential deep learning formulates learning as an evidence acquisition process [42, 32]. Every training example adds support to a learned higher-order, *evidential* distribution. Sampling from this distribution yields instances of lower-order likelihood functions from which the data

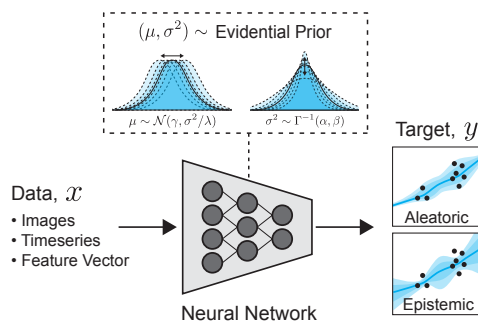


Figure 1: **Evidential regression** simultaneously learns a continuous target along with aleatoric (data) and epistemic (model) uncertainty. Given an input, the network is trained to predict the parameters of an evidential distribution, which models a higher-order probability distribution over the individual likelihood parameters, (μ, σ^2) .

was drawn. Instead of placing priors on network weights, as is done in Bayesian NNs, evidential approaches place priors directly over the likelihood function. By training a neural network to output the hyperparameters of the higher-order evidential distribution, a grounded representation of both epistemic and aleatoric uncertainty can then be learned without the need for sampling.

To date, evidential deep learning has been targeted towards discrete classification problems [42, 32, 22] and has required either a well-defined distance measure to a maximally uncertain prior [42] or relied on training with OOD data to inflate model uncertainty [32, 31]. In contrast, continuous regression problems present the complexity of lacking a well-defined distance measure to regularize the inferred evidential distribution. Further, pre-defining a reasonable OOD dataset is non-trivial in the majority of applications; thus, methods to obtain calibrated uncertainty on OOD data from only an in-distribution training set are required.

We present a novel approach that models the uncertainty of regression networks via learned evidential distributions (Fig. 1). Specifically, this work makes the following contributions:

1. A novel and scalable method for learning epistemic and aleatoric uncertainty on regression problems, without sampling during inference or training with out-of-distribution data;
2. Formulation of an evidential regularizer for continuous regression problems, necessary for penalizing incorrect evidence on errors and OOD examples;
3. Evaluation of epistemic uncertainty on benchmark and complex vision regression tasks along with comparisons to state-of-the-art NN uncertainty estimation techniques; and
4. Robustness and calibration evaluation on OOD and adversarially perturbed test input data.

2 Modelling uncertainties from data

2.1 Preliminaries

Consider the following supervised optimization problem: given a dataset, \mathcal{D} , of N paired training examples, $\mathcal{D} = \{\mathbf{x}_i, y_i\}_{i=1}^N$, we aim to learn a functional mapping f , parameterized by a set of weights, \mathbf{w} , which approximately solves the following optimization problem:

$$\min_{\mathbf{w}} J(\mathbf{w}); \quad J(\mathbf{w}) = \frac{1}{N} \sum_{i=1}^N \mathcal{L}_i(\mathbf{w}), \quad (1)$$

where $\mathcal{L}_i(\cdot)$ describes a loss function. In this work, we consider deterministic regression problems, which commonly optimize the sum of squared errors, $\mathcal{L}_i(\mathbf{w}) = \frac{1}{2} \|y_i - f(\mathbf{x}_i; \mathbf{w})\|^2$. In doing so, the model is encouraged to learn the average correct answer for a given input, but does not explicitly model any underlying noise or uncertainty in the data when making its estimation.

2.2 Maximum likelihood estimation

One can approach this problem from a maximum likelihood perspective, where we learn model parameters that maximize the likelihood of observing a particular set of training data. In the context of deterministic regression, we assume our targets, y_i , were drawn i.i.d. from a distribution such as a Gaussian with mean and variance parameters $\theta = (\mu, \sigma^2)$. In maximum likelihood estimation (MLE), we aim to learn a model to infer θ that maximize the likelihood of observing our targets, y , given by $p(y_i|\theta)$. This is achieved by minimizing the negative log likelihood loss function:

$$\mathcal{L}_i(\mathbf{w}) = -\log p(y_i | \underbrace{\mu, \sigma^2}_{\theta}) = \frac{1}{2} \log(2\pi\sigma^2) + \frac{(y_i - \mu)^2}{2\sigma^2}. \quad (2)$$

In learning θ , this likelihood function successfully models the uncertainty in the data, also known as the aleatoric uncertainty. However, our model is oblivious to its predictive epistemic uncertainty [25].

In this paper, we present a novel approach for estimating the evidence supporting network predictions in regression by directly learning both the aleatoric uncertainty present in the data as well as the model’s underlying epistemic uncertainty. We achieve this by placing higher-order prior distributions over the learned parameters governing the distribution from which our observations are drawn.

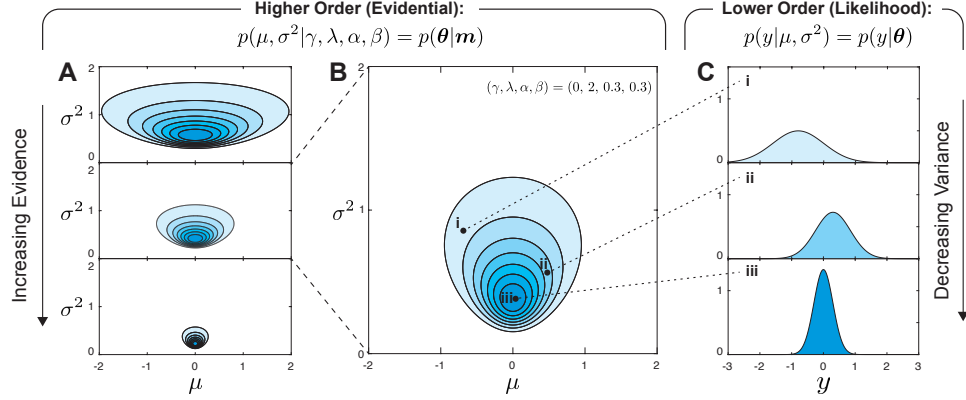


Figure 2: **Normal Inverse-Gamma distribution.** Different realizations of our evidential distribution (A) correspond to different levels of confidences in the parameters (e.g. μ, σ^2). Sampling from a single realization of a higher-order evidential distribution (B), yields lower-order likelihoods (C) over the data (e.g. $p(y|\mu, \sigma^2)$). Darker shading indicates higher probability mass. We aim to learn a model that predicts the target, y , from an input, x , with an evidential prior imposed on our likelihood to enable uncertainty estimation.

3 Evidential uncertainty for regression

3.1 Problem setup

We consider the problem where the observed targets, y_i , are drawn i.i.d. from a Gaussian distribution, as in standard MLE (Sec. 2.2), but now with *unknown mean and variance* (μ, σ^2), which we seek to also probabilistically estimate. We model this by placing a prior distribution on (μ, σ^2) . If we assume observations are drawn from a Gaussian, in line with assumptions Sec. 2.2, this leads to placing a Gaussian prior on the unknown mean and an Inverse-Gamma prior on the unknown variance:

$$\begin{aligned} (y_1, \dots, y_N) &\sim \mathcal{N}(\mu, \sigma^2) \\ \mu &\sim \mathcal{N}(\gamma, \sigma^2 v^{-1}) \quad \sigma^2 \sim \Gamma^{-1}(\alpha, \beta). \end{aligned} \quad (3)$$

where $\Gamma(\cdot)$ is the gamma function, $\mathbf{m} = (\gamma, v, \alpha, \beta)$, and $\gamma \in \mathbb{R}, v > 0, \alpha > 1, \beta > 0$.

Our aim is to estimate a posterior distribution $q(\mu, \sigma^2) = p(\mu, \sigma^2 | y_1, \dots, y_N)$. To obtain an approximation for the true posterior, we assume that the estimated distribution can be factorized [39] such that $q(\mu, \sigma^2) = q(\mu) q(\sigma^2)$. Thus, our approximation takes the form of the Gaussian conjugate prior, the Normal Inverse-Gamma (NIG) distribution:

$$p(\underbrace{\mu, \sigma^2}_{\boldsymbol{\theta}} | \underbrace{\gamma, v, \alpha, \beta}_{\mathbf{m}}) = \frac{\beta^\alpha \sqrt{v}}{\Gamma(\alpha) \sqrt{2\pi\sigma^2}} \left(\frac{1}{\sigma^2}\right)^{\alpha+1} \exp\left\{-\frac{2\beta + v(\gamma - \mu)^2}{2\sigma^2}\right\}. \quad (4)$$

A popular interpretation of the parameters of this conjugate prior distribution is in terms of “virtual-observations” in support of a given property [23]. For example, the mean of a NIG distribution can be intuitively interpreted as being estimated from v virtual-observations with sample mean γ , while its variance is estimated from α virtual-observations with sample mean γ and sum of squared deviations $2v$. Following from this interpretation, we define the total evidence, Φ , of our evidential distributions as the sum of all inferred virtual-observations counts: $\Phi = 2v + \alpha$.

Drawing a sample $\boldsymbol{\theta}_j$ from the NIG distribution yields a single instance of our likelihood function, namely $\mathcal{N}(\mu_j, \sigma_j^2)$. Thus, the NIG hyperparameters, $(\gamma, v, \alpha, \beta)$, determine not only the location but also the dispersion concentrations, or uncertainty, associated with our inferred likelihood function. Therefore, we can interpret the NIG distribution as the *higher-order, evidential* distribution on top of the unknown *lower-order* likelihood distribution from which observations are drawn.

For example, in Fig. 2A we visualize different evidential NIG distributions with varying model parameters. We illustrate that by increasing the evidential parameters (i.e. v, α) of this distribution, the p.d.f. becomes tightly concentrated about its inferred likelihood function. Considering a single

parameter realization of this higher-order distribution (Fig. 2B), we can subsequently sample many lower-order realizations of our likelihood function, as shown in Fig. 2C.

In this work, we use neural networks to infer, given an input, the hyperparameters, \mathbf{m} , of this higher-order, evidential distribution. This approach presents several distinct advantages compared to prior work. First, our method enables simultaneous learning of the desired regression task, along with aleatoric and epistemic uncertainty estimation, by enforcing evidential priors and without leveraging any out-of-distribution data during training. Second, since the evidential prior is a higher-order NIG distribution, the maximum likelihood Gaussian can be computed analytically from the expected values of the (μ, σ^2) parameters, without the need for sampling. Third, we can effectively estimate the epistemic or model uncertainty associated with the network’s prediction by simply evaluating the variance of our inferred evidential distribution.

3.2 Prediction and uncertainty estimation

The aleatoric uncertainty, also referred to as statistical or data uncertainty, is representative of unknowns that differ each time we run the same experiment. The epistemic (or model) uncertainty, describes the estimated uncertainty in the prediction. Given a NIG distribution, we can compute the prediction, aleatoric, and epistemic uncertainty as

$$\underbrace{\mathbb{E}[\mu] = \gamma}_{\text{prediction}}, \quad \underbrace{\mathbb{E}[\sigma^2] = \frac{\beta}{\alpha-1}}_{\text{aleatoric}}, \quad \underbrace{\text{Var}[\mu] = \frac{\beta}{v(\alpha-1)}}_{\text{epistemic}}. \quad (5)$$

Complete derivations for these moments are available in Sec. S1.1. Note that $\text{Var}[\mu] = \mathbb{E}[\sigma^2]/v$, which is expected as v is one of our two evidential virtual-observation counts.

3.3 Learning the evidential distribution

Having formalized the use of an evidential distribution to capture both aleatoric and epistemic uncertainty, we next describe our approach for learning a model to output the hyperparameters of this distribution. For clarity, we structure the learning process as a multi-task learning problem, with two distinct parts: (1) acquiring or maximizing model evidence in support of our observations and (2) minimizing evidence or inflating uncertainty when the prediction is wrong. At a high level, we can think of (1) as a way of fitting our data to the evidential model while (2) enforces a prior to remove incorrect evidence and inflate uncertainty.

(1) Maximizing the model fit. From Bayesian probability theory, the “model evidence”, or marginal likelihood, is defined as the likelihood of an observation, y_i , given the evidential distribution parameters \mathbf{m} and is computed by marginalizing over the likelihood parameters $\boldsymbol{\theta}$:

$$p(y_i|\mathbf{m}) = \frac{p(y_i|\boldsymbol{\theta}, \mathbf{m})p(\boldsymbol{\theta}|\mathbf{m})}{p(\boldsymbol{\theta}|y_i, \mathbf{m})} = \int_{\sigma^2=0}^{\infty} \int_{\mu=-\infty}^{\infty} p(y_i|\mu, \sigma^2)p(\mu, \sigma^2|\mathbf{m}) d\mu d\sigma^2 \quad (6)$$

The model evidence is, in general, not straightforward to evaluate since computing it involves integrating out the dependence on latent model parameters. However, in the case of placing a NIG evidential prior on our Gaussian likelihood function an analytical solution does exist:

$$p(y_i|\mathbf{m}) = \text{St} \left(y_i; \gamma, \frac{\beta(1+v)}{v\alpha}, 2\alpha \right). \quad (7)$$

where $\text{St}(y; \mu_{\text{St}}, \sigma_{\text{St}}^2, \nu_{\text{St}})$ is the Student-t distribution evaluated at y with location μ_{St} , scale σ_{St}^2 , and ν_{St} degrees of freedom. We denote the loss, $\mathcal{L}_i^{\text{NLL}}(\mathbf{w})$, as the negative logarithm of model evidence

$$\mathcal{L}_i^{\text{NLL}}(\mathbf{w}) = \frac{1}{2} \log \left(\frac{\pi}{v} \right) - \alpha \log(\Omega) + \left(\alpha + \frac{1}{2} \right) \log \left((y_i - \gamma)^2 v + \Omega \right) + \log \left(\frac{\Gamma(\alpha)}{\Gamma(\alpha + \frac{1}{2})} \right) \quad (8)$$

where $\Omega = 2\beta(1+v)$. Complete derivations for Eq. 7 and Eq. 8 are provided in Sec. S1.2. This loss provides an objective for training a NN to output parameters of a NIG distribution to fit the observations by maximizing the model evidence.

(2) Minimizing evidence on errors. Next, we describe how to regularize training by applying an incorrect evidence penalty (i.e., high uncertainty prior) to try to minimize evidence on incorrect predictions. This has been demonstrated with success in the classification setting where non-misleading

evidence is removed from the posterior, and the uncertain prior is set to a uniform Dirichlet [42]. The analogous minimization in the regression setting involves $KL[p(\boldsymbol{\theta}|\mathbf{m}) || p(\boldsymbol{\theta}|\tilde{\mathbf{m}})]$, where $\tilde{\mathbf{m}}$ are the parameters of the uncertain NIG prior with zero evidence (i.e., $\{\alpha, v\} = 0$). Unfortunately, the KL between any NIG and the zero evidence NIG prior is undefined⁽¹⁾. Furthermore, this loss should not be enforced everywhere, but instead specifically where the posterior is “misleading”. Past works in classification [42] accomplish this by using the ground truth likelihood classification (the one-hot encoded labels) to remove “non-misleading” evidence. However, in regression, it is not possible to penalize evidence everywhere except our single label point estimate, as this space is infinite and unbounded. Thus, these previous approaches for regularizing evidential learning are not applicable.

To address these challenges in the regression setting, we formulate a novel evidence regularizer, \mathcal{L}_i^R , scaled on the error of the i -th prediction,

$$\mathcal{L}_i^R(\mathbf{w}) = |y_i - \mathbb{E}[\mu_i]| \cdot \Phi = |y_i - \gamma| \cdot (2v + \alpha). \quad (9)$$

This loss imposes a penalty whenever there is an error in the prediction and scales with the total evidence of our inferred posterior. Conversely, large amounts of predicted evidence will not be penalized as long as the prediction is close to the target. A naïve alternative to directly penalizing evidence would be to soften the zero-evidence prior to instead have ϵ -evidence such that the KL is finite and defined. However, doing so results in hypersensitivity to the selection of ϵ , as it should be small yet $KL \rightarrow \infty$ as $\epsilon \rightarrow 0$. We demonstrate the added value of our evidential regularizer through ablation analysis (Sec. 4.1), the limitations of the soft KL regularizer (Sec. S2.1.3), and the ability to learn disentangled aleatoric and epistemic uncertainty (Sec. S2.1.4).

Summary and implementation details. The total loss, $\mathcal{L}_i(\mathbf{w})$, consists of the two loss terms for maximizing and regularizing evidence, scaled by a regularization coefficient, λ ,

$$\mathcal{L}_i(\mathbf{w}) = \mathcal{L}_i^{\text{NLL}}(\mathbf{w}) + \lambda \mathcal{L}_i^R(\mathbf{w}). \quad (10)$$

Here, λ trades off uncertainty inflation with model fit. Setting $\lambda = 0$ yields an over-confident estimate while setting λ too high results in over-inflation⁽²⁾. In practice, our NN is trained to output the parameters, \mathbf{m} , of the evidential distribution: $\mathbf{m}_i = f(\mathbf{x}_i; \mathbf{w})$. Since \mathbf{m} is composed of 4 parameters, f has 4 output neurons for every target y . We enforce the constraints on (v, α, β) with a softplus activation (and additional +1 added to α since $\alpha > 1$). Linear activation is used for $\gamma \in \mathbb{R}$.

4 Experiments

4.1 Predictive accuracy and uncertainty benchmarking

We first qualitatively compare the performance of our approach against a set of baselines on a one-dimensional cubic regression dataset (Fig. 3). Following [20, 28], we train models on $y = x^3 + \epsilon$, where $\epsilon \sim \mathcal{N}(0, 3)$ within ± 4 and test within ± 6 . We compare aleatoric (A) and epistemic (B) uncertainty estimation for baseline methods (left), evidence without regularization (middle), and with regularization (right). Gaussian MLE [36] and Ensembling [28] are used as respective baseline methods. All aleatoric methods (A) accurately capture uncertainty within the training distribution, as expected. Epistemic uncertainty (B) captures uncertainty on OOD data; our proposed evidential method estimates uncertainty appropriately and grows on OOD data, without dependence on sampling. Training details and additional experiments for this example are available in Sec. S2.1.

Additionally, we compare our approach to baseline methods for NN predictive uncertainty estimation on

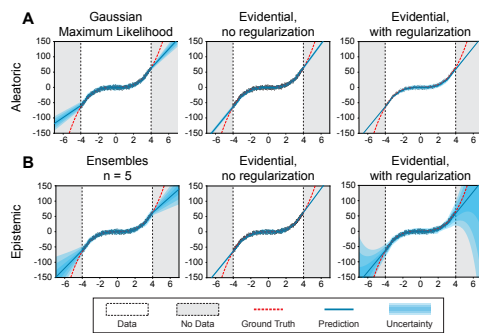


Figure 3: **Toy uncertainty estimation.** Aleatoric (A) and epistemic (B) uncertainty estimates on the dataset $y = x^3 + \epsilon$, $\epsilon \sim \mathcal{N}(0, 3)$. Regularized evidential regression (right) enables precise prediction within the training regime and conservative epistemic uncertainty estimates in regions with no training data. Baseline results are also illustrated.

⁽¹⁾Please refer to Sec. S1.3 for derivation of the KL between two NIGs, along with a no-evidence NIG prior.

⁽²⁾Experiments demonstrating the effect of λ on a learning problem are provided in Sec. S2.1.3

Dataset	RMSE			NLL			Inference Speed (ms)		
	Dropout	Ensembles	Evidential	Dropout	Ensembles	Evidential	Dropout	Ensemble	Evidential
Boston	2.97 ± 0.19	3.28 ± 1.00	3.06 ± 0.16	2.46 ± 0.06	2.41 ± 0.25	2.35 ± 0.06	3.24	3.35	0.85
Concrete	5.23 ± 0.12	6.03 ± 0.58	5.85 ± 0.15	3.04 ± 0.02	3.06 ± 0.18	3.01 ± 0.02	2.99	3.43	0.94
Energy	1.66 ± 0.04	2.09 ± 0.29	2.06 ± 0.10	1.99 ± 0.02	1.38 ± 0.22	1.39 ± 0.06	3.08	3.80	0.87
Kin8nm	0.10 ± 0.00	0.09 ± 0.00	0.09 ± 0.00	-0.95 ± 0.01	-1.20 ± 0.02	-1.24 ± 0.01	3.24	3.79	0.97
Naval	0.01 ± 0.00	0.00 ± 0.00	0.00 ± 0.00	-3.80 ± 0.01	-5.63 ± 0.05	-5.73 ± 0.07	3.31	3.37	0.84
Power	4.02 ± 0.04	4.11 ± 0.17	4.23 ± 0.09	2.80 ± 0.01	2.79 ± 0.04	2.81 ± 0.07	2.93	3.36	0.85
Protein	4.36 ± 0.01	4.71 ± 0.06	4.64 ± 0.03	2.89 ± 0.00	2.83 ± 0.02	2.63 ± 0.00	3.45	3.68	1.18
Wine	0.62 ± 0.01	0.64 ± 0.04	0.61 ± 0.02	0.93 ± 0.01	0.94 ± 0.12	0.89 ± 0.05	3.00	3.32	0.86
Yacht	1.11 ± 0.09	1.58 ± 0.48	1.57 ± 0.56	1.55 ± 0.03	1.18 ± 0.21	1.03 ± 0.19	2.99	3.36	0.87

Table 1: **Benchmark regression tests.** RMSE, negative log-likelihood (NLL), and inference speed for dropout sampling [9], model ensembling [28], and evidential regression. Top scores for each metric and dataset are bolded (within statistical significance), $n = 5$ for sampling baselines. Evidential models outperform baseline methods for NLL and inference speed on all datasets.

real world datasets used in [20, 28, 9]. We evaluate our proposed evidential regression method against results presented for model ensembles [28] and dropout [9] based on root mean squared error (RMSE), negative log-likelihood (NLL), and inference speed. Table 1 indicates that even though, unlike the competing approaches, the loss function for evidential regression does not explicitly optimize accuracy, it remains competitive with respect to RMSE while being the top performer on all datasets for NLL and speed. To give the two baseline methods maximum advantage, we parallelize their sampled inference ($n = 5$). Dropout requires additional multiplications with the sampled mask, resulting in slightly slower inference compared to ensembles, whereas evidence only requires a single forward pass and network. Training details for Table 1 are available in Sec. S2.2.

4.2 Monocular depth estimation

After establishing benchmark comparison results, in this subsection we demonstrate the scalability of our evidential learning approach by extending it to the complex, high-dimensional task of depth estimation. Monocular end-to-end depth estimation is a central problem in computer vision and involves learning a representation of depth directly from an RGB image of the scene. This is a challenging learning task as the target y is very high-dimensional, with predictions at every pixel.

Our training data consists of over 27k RGB-to-depth, $H \times W$, image pairs of indoor scenes (e.g. kitchen, bedroom, etc.) from the NYU Depth v2 dataset [35]. We train a U-Net style NN [41] for inference and test on a disjoint test-set of scenes⁽³⁾. The final layer outputs a single $H \times W$ activation map in the case of vanilla regression, dropout, and ensembling. Spatial dropout uncertainty sampling [2, 45] is used for the dropout implementation. Evidential regression outputs four of these output maps, corresponding to $(\gamma, \nu, \alpha, \beta)$, with constraints according to Sec. 3.3.

We evaluate the models in terms of their accuracy and their predictive epistemic uncertainty on unseen test data. Fig. 4A visualizes the predicted depth, absolute error from ground truth, and predictive entropy across two randomly picked test images. Ideally, a strong epistemic uncertainty measure would capture errors in the prediction (i.e., roughly correspond to where the model is making errors). Compared to dropout and ensembling, evidential modeling captures the depth errors while providing clear and localized predictions of confidence. In general, dropout drastically underestimates the amount of uncertainty present, while ensembling occasionally overestimates the uncertainty. Fig. 4B

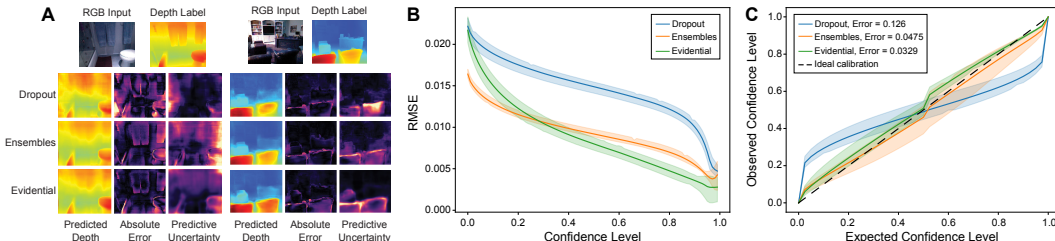


Figure 4: **Epistemic uncertainty in depth estimation.** (A) Example pixel-wise depth predictions and uncertainty for each model. (B) Relationship between prediction confidence level and observed error; a strong inverse trend is desired. (C) Model uncertainty calibration [27]; (ideal: $y = x$). Inset shows calibration errors.

⁽³⁾Full dataset, model, training, and performance details for depth models are available in Sec. S3.

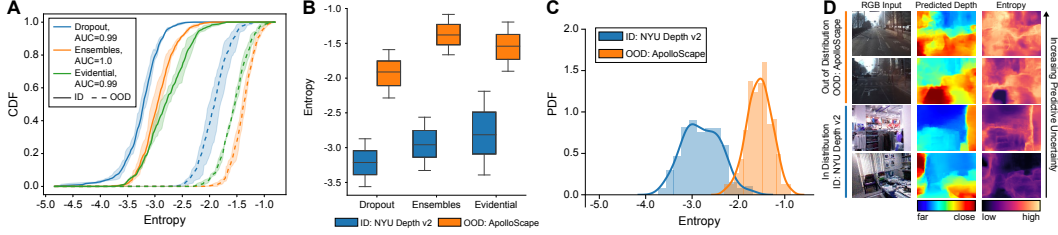


Figure 5: **Uncertainty on out-of-distribution (OOD) data.** Evidential models estimate low uncertainty (entropy) on in-distribution (ID) data and inflate uncertainty on OOD data. (A) Cumulative density function (CDF) of ID and OOD entropy for tested methods. OOD detection assessed via AUC-ROC. (B) Uncertainty (entropy) comparisons across methods. (C) Full density histograms of entropy estimated by evidential regression on ID and OOD data, along with sample images (D). All data has not been seen during training.

shows how each model performs as pixels with uncertainty greater than certain thresholds are removed. Evidential models exhibit strong performance, as error steadily decreases with increasing confidence.

Fig. 4C additionally evaluates the calibration of our uncertainty estimates. Calibration curves are computed according to [27], and ideally follows $y = x$ to represent, for example, that a target falls in a 90% confidence interval approximately 90% of the time. Again, we see that dropout overestimates confidence when considering low confidence scenarios (calibration error: 0.126). Ensembling exhibits better calibration error (0.048) but is still outperformed by the proposed evidential method (0.033). Results show evaluations from multiple trials, with individual trials available in Sec. S3.3.

In addition to epistemic uncertainty experiments, we also evaluate aleatoric uncertainty estimates, with comparisons to Gaussian MLE learning. Since evidential models fit the data to a higher-order Gaussian distribution, it is expected that they can accurately learn aleatoric uncertainty (as is also shown in [42, 18]). Therefore, we present these aleatoric results in Sec. S3.4 and focus the remainder of the results on evaluating the harder task of epistemic uncertainty estimation in the context of out-of-distribution (OOD) and adversarially perturbed samples.

4.3 Out-of distribution testing

A key use of uncertainty estimation is to understand when a model is faced with test samples that fall out-of-distribution (OOD) or when the model’s output cannot be trusted. In this subsection, we investigate the ability of evidential models to capture increased epistemic uncertainty on OOD data, by testing on images from ApolloScape [21], an OOD dataset of diverse outdoor driving. It is crucial to note here that related methods such as Prior Networks in classification [32, 33] explicitly require OOD data during training to supervise instances of high uncertainty. Our evidential method, like Bayesian NNs, does not have this limitation and sees only in distribution (ID) data during training.

For each method, we feed in the ID and OOD test sets and record the mean predicted entropy for every test image. Fig. 5A shows the cumulative density function (CDF) of entropy for each of the methods and test sets. A distinct positive shift in the entropy CDFs can be seen for evidential models on OOD data and is competitive across methods. Fig. 5B summarizes these entropy distributions as interquartile boxplots to again show clear separation in the uncertainty distribution on OOD data. We focus on the distribution from our evidential models in Fig. 5C and provide sample predictions (ID and OOD) in Fig. 5D. These results show that evidential models, without training on OOD data, capture increased uncertainty on OOD data on par with epistemic uncertainty estimation baselines.

4.3.1 Robustness to adversarial samples

Next, we consider the extreme case of OOD detection where the inputs are adversarially perturbed to inflict error on the predictions. We compute adversarial perturbations to our test set using the Fast Gradient Sign Method (FGSM) [16], with increasing scales, ϵ , of noise. Note that the purpose of this experiment is not to propose a defense for state-of-the-art adversarial attacks, but rather to demonstrate that evidential models accurately capture increased predictive uncertainty on samples which have been adversarially perturbed. Fig. 6A confirms that the absolute error of all methods increases as adversarial noise is added. We also observe a positive effect of noise on our predictive uncertainty estimates in Fig. 6B. Furthermore, we observe that the entropy CDF steadily shifts towards higher uncertainties as the noise in the input sample increases (Fig. 6C).

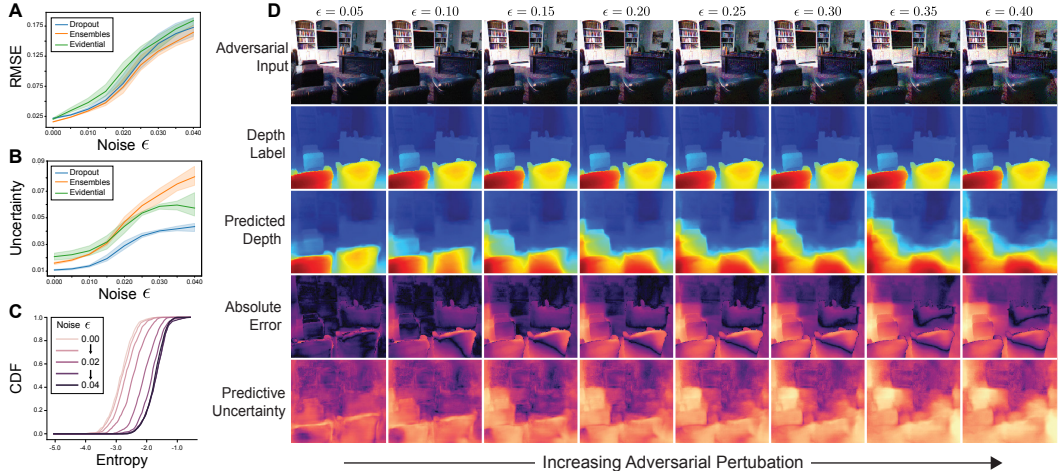


Figure 6: **Evidential robustness under adversarial noise.** Relationship between adversarial noise ϵ and predictive error (A) and estimated epistemic uncertainty (B). (C) CDF of entropy estimated by evidential regression under the presence of increasing ϵ . (D) Visualization of the effects of increasing adversarial perturbation on the predictions, error, and uncertainty for evidential regression. Results of sample test-set image are shown.

The robustness of evidential uncertainty against adversarial perturbations is visualized in greater detail in Fig. 6D, which illustrates the predicted depth, error, and estimated pixel-wise uncertainty as we perturb the input image with greater amounts of noise (left to right). Not only does the predictive uncertainty steadily increase with increasing noise, but the spatial concentrations of uncertainty throughout the image also maintain tight correspondence with the error.

5 Related work

Our work builds on a large history of uncertainty estimation [25, 38, 37, 19] and modelling probability distributions using NNs [36, 4, 14, 26].

Prior networks and evidential models. A large focus within Bayesian inference is on placing prior distributions over hierarchical models to estimate uncertainty [12, 13]. Our methodology closely relates to evidential deep learning [42] and Prior Networks [32, 33] which place Dirichlet priors over discrete classification predictions. However, these works either rely on regularizing divergence to a fixed, well-defined prior [42, 46], require OOD training data [32, 31, 7, 19], or can only estimate aleatoric uncertainty by performing density estimation [11, 18]. Our work tackles these limitations with focus on continuous regression learning tasks where this divergence regularizer is not well-defined, without requiring any OOD training data to estimate both aleatoric and epistemic uncertainty.

Bayesian deep learning. In Bayesian deep learning, priors are placed over network weights that are estimated using variational inference [26]. Approximations via dropout [9, 34, 10, 2], ensembling [28, 40] or other approaches [5, 20] rely on expensive samples to estimate predictive variance. In contrast, we train a deterministic NN to place uncertainty priors over the predictive distribution, requiring only a single forward pass to estimate uncertainty. Additionally, our approach of uncertainty estimation proved to be well calibrated and was capable of detecting OOD and adversarial data.

6 Conclusions, limitations, and scope

In this paper, we develop a novel method for learning uncertainty in regression problems by placing evidential priors over the likelihood output. We demonstrate combined prediction with aleatoric and epistemic uncertainty estimation, scalability to complex vision tasks, and calibrated uncertainty on OOD data. This method is widely applicable across regression tasks including temporal forecasting [17], property prediction [8], and control learning [1, 30]. While our method presents several advantages over existing approaches, its primary limitations are in tuning the regularization

coefficient and in effectively removing non-misleading evidence when calibrating the uncertainty. While dual-optimization formulations [47] could be explored for balancing regularization, we believe further investigation is warranted to discover alternative ways to remove non-misleading evidence. Future analysis using other choices of the variance prior distribution, such as the log-normal or the heavy-tailed log-Cauchy distribution, will be critical to determine the effects of the choice of prior on the estimated likelihood parameters. The efficiency, scalability, and calibration of our approach could enable the precise and fast uncertainty estimation required for robust NN deployment in safety-critical prediction domains.

Broader Impact

Uncertainty estimation for neural networks has very significant societal impact. Neural networks are increasingly being trained as black-box predictors and being placed in larger decision systems where errors in their predictions can pose immediate threat to downstream tasks. Systematic methods for calibrated uncertainty estimation under these conditions are needed, especially as these systems are deployed in safety critical domains, such for autonomous vehicle control [29], medical diagnosis [43], or in settings with large dataset imbalances and bias such as crime forecasting [24] and facial recognition [3].

This work is complementary to a large portion of machine learning research which is continually pushing the boundaries on neural network precision and accuracy. Instead of solely optimizing larger models for increased performance, our method focuses on how these models can be equipped with the ability to estimate their own confidence. Our results demonstrating superior calibration of our method over baselines are also critical in ensuring that we can place a certain level of trust in these algorithms and in understanding when they say “I don’t know”.

While there are clear and broad benefits of uncertainty estimation in machine learning, we believe it is also important to recognize potential societal challenges that may arise. With increased performance and uncertainty estimation capabilities, humans will inevitably become increasingly trusting in a model’s predictions, as well as its ability to catch dangerous or uncertain decisions before they are executed. Thus, it is important to continue to pursue redundancy in such learning systems to increase the likelihood that mistakes can be caught and corrected independently.

Acknowledgments and Disclosure of Funding

This research is based upon work supported by the National Science Foundation Graduate Research Fellowship under Grant No. 1122374 and Toyota Research Institute (TRI). We also gratefully acknowledge the support of NVIDIA Corporation with the donation of the Volta V100 GPU used for this research.

References

- [1] Alexander Amini, Guy Rosman, Sertac Karaman, and Daniela Rus. Variational end-to-end navigation and localization. In *2019 International Conference on Robotics and Automation (ICRA)*, pages 8958–8964. IEEE, 2019.
- [2] Alexander Amini, Ava Soleimany, Sertac Karaman, and Daniela Rus. Spatial uncertainty sampling for end-to-end control. *arXiv preprint arXiv:1805.04829*, 2018.
- [3] Alexander Amini, Ava P Soleimany, Wilko Schwarting, Sangeeta N Bhatia, and Daniela Rus. Uncovering and mitigating algorithmic bias through learned latent structure. In *Proceedings of the 2019 AAAI/ACM Conference on AI, Ethics, and Society*, pages 289–295, 2019.
- [4] Christopher M Bishop. Mixture density networks. In *Tech. Rep. NCRG/94/004, Neural Computing Research Group*. Aston University, 1994.
- [5] Charles Blundell, Julien Cornebise, Koray Kavukcuoglu, and Daan Wierstra. Weight uncertainty in neural networks. *arXiv preprint arXiv:1505.05424*, 2015.
- [6] Mariusz Bojarski, Davide Del Testa, Daniel Dworakowski, Bernhard Firner, Beat Flepp, Praseon Goyal, Lawrence D Jackel, Mathew Monfort, Urs Muller, Jiakai Zhang, et al. End to end learning for self-driving cars. *arXiv preprint arXiv:1604.07316*, 2016.

- [7] Wenhua Chen, Yilin Shen, Hongxia Jin, and William Wang. A variational dirichlet framework for out-of-distribution detection. *arXiv preprint arXiv:1811.07308*, 2018.
- [8] Connor W Coley, Regina Barzilay, William H Green, Tommi S Jaakkola, and Klavs F Jensen. Convolutional embedding of attributed molecular graphs for physical property prediction. *Journal of chemical information and modeling*, 57(8):1757–1772, 2017.
- [9] Yarin Gal and Zoubin Ghahramani. Dropout as a bayesian approximation: Representing model uncertainty in deep learning. In *international conference on machine learning*, pages 1050–1059, 2016.
- [10] Yarin Gal, Jiri Hron, and Alex Kendall. Concrete dropout. In *Advances in neural information processing systems*, pages 3581–3590, 2017.
- [11] Jochen Gast and Stefan Roth. Lightweight probabilistic deep networks. In *Proceedings of the IEEE Conference on Computer Vision and Pattern Recognition*, pages 3369–3378, 2018.
- [12] Andrew Gelman et al. Prior distributions for variance parameters in hierarchical models (comment on article by browne and draper). *Bayesian analysis*, 1(3):515–534, 2006.
- [13] Andrew Gelman, Aleks Jakulin, Maria Grazia Pittau, Yu-Sung Su, et al. A weakly informative default prior distribution for logistic and other regression models. *The Annals of Applied Statistics*, 2(4):1360–1383, 2008.
- [14] Igor Gilitschenski, Roshni Sahoo, Wilko Schwarting, Alexander Amini, Sertac Karaman, and Daniela Rus. Deep orientation uncertainty learning based on a bingham loss. In *International Conference on Learning Representations*, 2019.
- [15] Clément Godard, Oisín Mac Aodha, and Gabriel J Brostow. Unsupervised monocular depth estimation with left-right consistency. In *Proceedings of the IEEE Conference on Computer Vision and Pattern Recognition*, pages 270–279, 2017.
- [16] Ian J Goodfellow, Jonathon Shlens, and Christian Szegedy. Explaining and harnessing adversarial examples. *arXiv preprint arXiv:1412.6572*, 2014.
- [17] Klaus Greff, Rupesh K Srivastava, Jan Koutník, Bas R Steunebrink, and Jürgen Schmidhuber. Lstm: A search space odyssey. *IEEE transactions on neural networks and learning systems*, 28(10):2222–2232, 2016.
- [18] Pavel Gurevich and Hannes Stuke. Gradient conjugate priors and multi-layer neural networks. *Artificial Intelligence*, 278:103184, 2020.
- [19] Danijar Hafner, Dustin Tran, Timothy Lillicrap, Alex Irpan, and James Davidson. Noise contrastive priors for functional uncertainty. In *Uncertainty in Artificial Intelligence*, pages 905–914. PMLR, 2020.
- [20] José Miguel Hernández-Lobato and Ryan Adams. Probabilistic backpropagation for scalable learning of bayesian neural networks. In *International Conference on Machine Learning*, pages 1861–1869, 2015.
- [21] Xinyu Huang, Xinjing Cheng, Qichuan Geng, Binbin Cao, Dingfu Zhou, Peng Wang, Yuanqing Lin, and Ruigang Yang. The apolloscape dataset for autonomous driving. In *Proceedings of the IEEE Conference on Computer Vision and Pattern Recognition Workshops*, pages 954–960, 2018.
- [22] Taejong Joo, Uijung Chung, and Min-Gwan Seo. Being bayesian about categorical probability. *arXiv preprint arXiv:2002.07965*, 2020.
- [23] Michael I Jordan. The exponential family: Conjugate priors, 2009.
- [24] Hyeon-Woo Kang and Hang-Bong Kang. Prediction of crime occurrence from multi-modal data using deep learning. *PloS one*, 12(4):e0176244, 2017.
- [25] Alex Kendall and Yarin Gal. What uncertainties do we need in bayesian deep learning for computer vision? In *Advances in neural information processing systems*, pages 5574–5584, 2017.
- [26] Durk P Kingma, Tim Salimans, and Max Welling. Variational dropout and the local reparameterization trick. In *Advances in Neural Information Processing Systems*, pages 2575–2583, 2015.
- [27] Volodymyr Kuleshov, Nathan Fenner, and Stefano Ermon. Accurate uncertainties for deep learning using calibrated regression. *arXiv preprint arXiv:1807.00263*, 2018.

- [28] Balaji Lakshminarayanan, Alexander Pritzel, and Charles Blundell. Simple and scalable predictive uncertainty estimation using deep ensembles. In *Advances in Neural Information Processing Systems*, pages 6402–6413, 2017.
- [29] Mathias Lechner, Ramin Hasani, Alexander Amini, Thomas A Henzinger, Daniela Rus, and Radu Grosu. Neural circuit policies enabling auditable autonomy. *Nature Machine Intelligence*, 2(10):642–652, 2020.
- [30] Sergey Levine, Chelsea Finn, Trevor Darrell, and Pieter Abbeel. End-to-end training of deep visuomotor policies. *The Journal of Machine Learning Research*, 17(1):1334–1373, 2016.
- [31] Andrey Malinin. *Uncertainty Estimation in Deep Learning with application to Spoken Language Assessment*. PhD thesis, University of Cambridge, 2019.
- [32] Andrey Malinin and Mark Gales. Predictive uncertainty estimation via prior networks. In *Advances in Neural Information Processing Systems*, pages 7047–7058, 2018.
- [33] Andrey Malinin and Mark Gales. Reverse kl-divergence training of prior networks: Improved uncertainty and adversarial robustness. In *Advances in Neural Information Processing Systems*, pages 14520–14531, 2019.
- [34] Dmitry Molchanov, Arsenii Ashukha, and Dmitry Vetrov. Variational dropout sparsifies deep neural networks. In *Proceedings of the 34th International Conference on Machine Learning-Volume 70*, pages 2498–2507. JMLR. org, 2017.
- [35] Pushmeet Kohli Nathan Silberman, Derek Hoiem and Rob Fergus. Indoor segmentation and support inference from rgb-d images. In *ECCV*, 2012.
- [36] David A Nix and Andreas S Weigend. Estimating the mean and variance of the target probability distribution. In *Proceedings of 1994 IEEE International Conference on Neural Networks (ICNN'94)*, volume 1, pages 55–60. IEEE, 1994.
- [37] Ian Osband, Charles Blundell, Alexander Pritzel, and Benjamin Van Roy. Deep exploration via bootstrapped dqn. In *Advances in neural information processing systems*, pages 4026–4034, 2016.
- [38] Harris Papadopoulos and Haris Haralambous. Reliable prediction intervals with regression neural networks. *Neural Networks*, 24(8):842–851, 2011.
- [39] Giorgio Parisi. *Statistical field theory*. Addison-Wesley, 1988.
- [40] Tim Pearce, Mohamed Zaki, Alexandra Brintrup, N Anastassacos, and A Neely. Uncertainty in neural networks: Bayesian ensembling. *stat*, 1050:12, 2018.
- [41] Olaf Ronneberger, Philipp Fischer, and Thomas Brox. U-net: Convolutional networks for biomedical image segmentation. In *International Conference on Medical image computing and computer-assisted intervention*, pages 234–241. Springer, 2015.
- [42] Murat Sensoy, Lance Kaplan, and Melih Kandemir. Evidential deep learning to quantify classification uncertainty. In *Advances in Neural Information Processing Systems*, pages 3179–3189, 2018.
- [43] Li Shen, Laurie R Margolies, Joseph H Rothstein, Eugene Fluder, Russell McBride, and Weiva Sieh. Deep learning to improve breast cancer detection on screening mammography. *Scientific reports*, 9(1):1–12, 2019.
- [44] Joram Soch and Carsten Allefeld. Kullback-leibler divergence for the normal-gamma distribution. *arXiv preprint arXiv:1611.01437*, 2016.
- [45] Jonathan Tompson, Ross Goroshin, Arjun Jain, Yann LeCun, and Christoph Bregler. Efficient object localization using convolutional networks. In *Proceedings of the IEEE Conference on Computer Vision and Pattern Recognition*, pages 648–656, 2015.
- [46] Theodoros Tsiligkaridis. Information robust dirichlet networks for predictive uncertainty estimation. *arXiv preprint arXiv:1910.04819*, 2019.
- [47] Shengjia Zhao, Jiaming Song, and Stefano Ermon. The information autoencoding family: A lagrangian perspective on latent variable generative models. *arXiv preprint arXiv:1806.06514*, 2018.